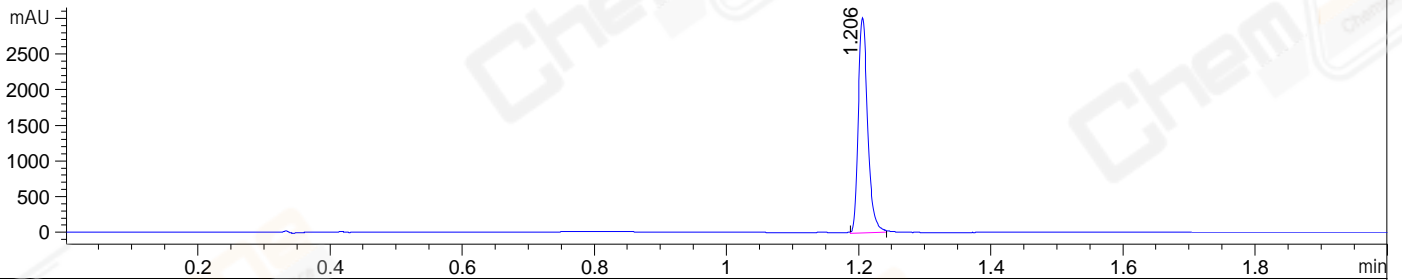
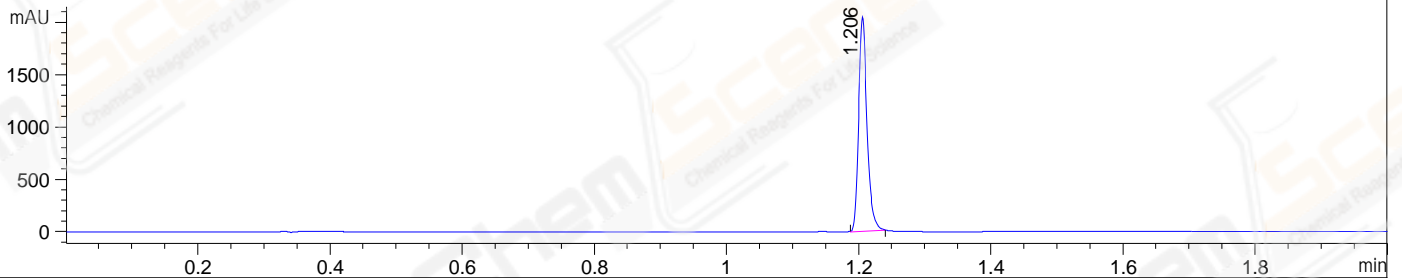


File ..51-07\009-P2-D10-LJC202403070056-S1962534.D Tgt Mass (EZX):  
 Injection Date : 07-Mar-24, 16:22:41 Seq. Line : 9  
 Sample Name : LJC202403070056-S1962534 Location : P2-D-10  
 Acq. Operator : LY Inj : 1  
 Spec. Reported : MS Integration Inj Volume : 1 ul  
 Acq. Method : D:\ChemStation\1\Data\20240307\20240307-3 2024-03-07 15-51-07\1-POS-2MIN(10  
 Analysis Method : D:\ChemStation\1\Data\20240307\20240307-3 2024-03-07 15-51-07\1-POS-2MIN(10  
 CAS NO. : 146549-21-5  
 Method Info : Mobile Phase: A: Water (0.01%TFA) B: ACN (0.01%TFA)  
 Gradient: 5% to 95%B within 0.6min  
 Flow Rate: 2.5ml/min  
 Column: Welch XB-C18 4.6\*50 3.5um  
 Oven Temperature: 45 degree Celsius  
 Guard Cartridges:XB-C18 4.6\*10MM 3.5UM 120A

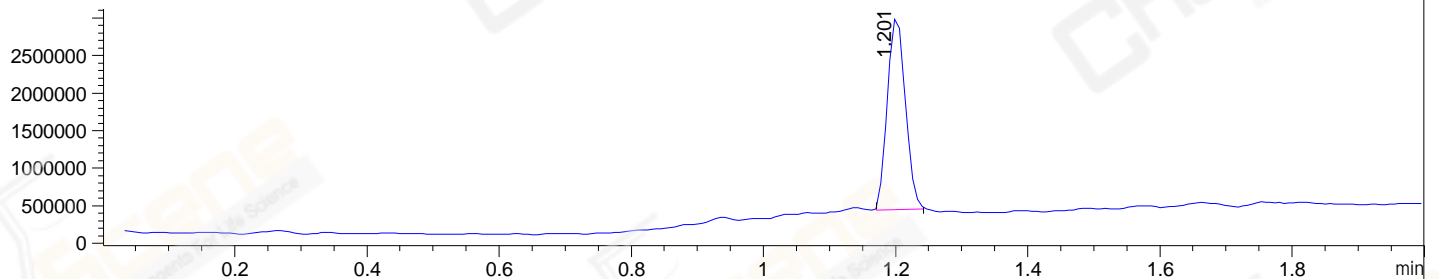
DAD1 A, Sig=214,4 Ref=off



DAD1 B, Sig=254,4 Ref=off



MSD1 TIC, MS File ES-API, Pos, Scan, Frag: 135



## Integration Results for DAD1 A, Sig=214,4 Ref=off

RetTim	Width	Area	Height	Area%	MS (+)
1.21	0.02	2979.31	3018.34	100.00	360

## Integration Results for DAD1 B, Sig=254,4 Ref=off

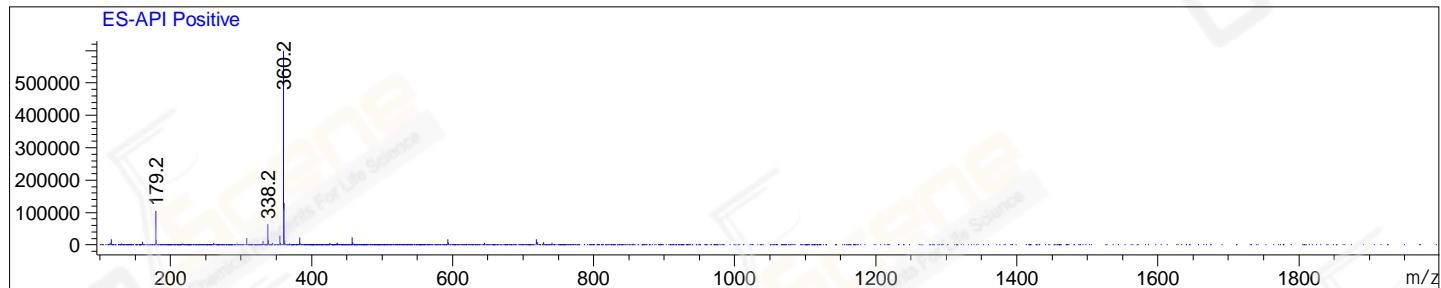
RetTim	Width	Area	Height	Area%	MS (+)
1.21	0.01	1808.19	2053.80	100.00	360

## Integration Results for MSD1 TIC, MS File

RetTim	Width	Area	Height	Area%	MS (+)
1.20	0.03	4765528.50	2592523.25	100.00	360

Ret. Time: 1.20

&lt;&lt;&lt;&lt; POSITIVE SPECTRA &gt;&gt;&gt;&gt;



## Base Peak Ion Ratios:

Ion	Mass	Abundance	Ratio
A	360.20	599936	100.00
A + 1	361.20	129372	21.56
A + 2	362.20	14126	2.35
A + 3	363.20	1733	0.29
A + 4	364.30	742	0.12
A + 5	365.20	61	0.01

## 2nd Largest Peak Ion Ratios:

Ion	Mass	Abundance	Ratio
B	179.20	104476	100.00
B + 1	180.20	16095	15.41
B + 2	181.20	1494	1.43
B + 3	182.20	101	0.10
B + 4	182.90	106	0.10
B + 5	183.85	103	0.10

\*\*\* End of Report \*\*\*