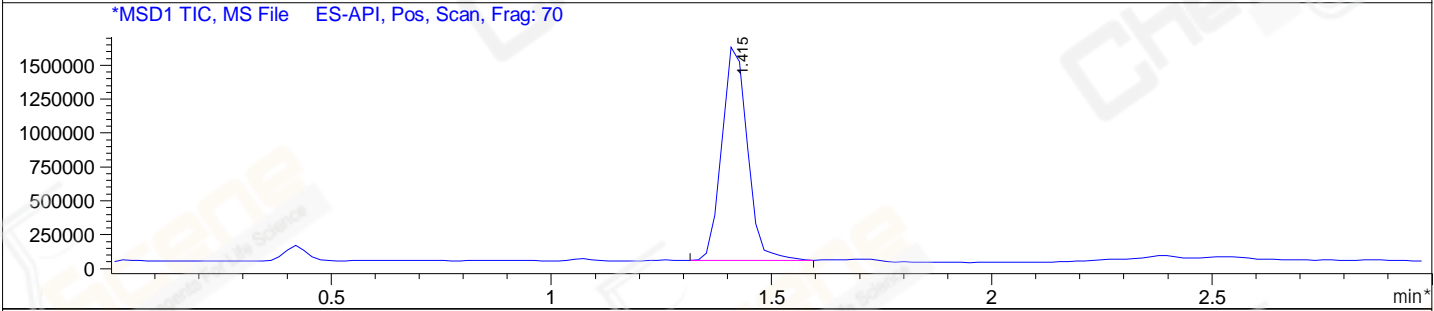
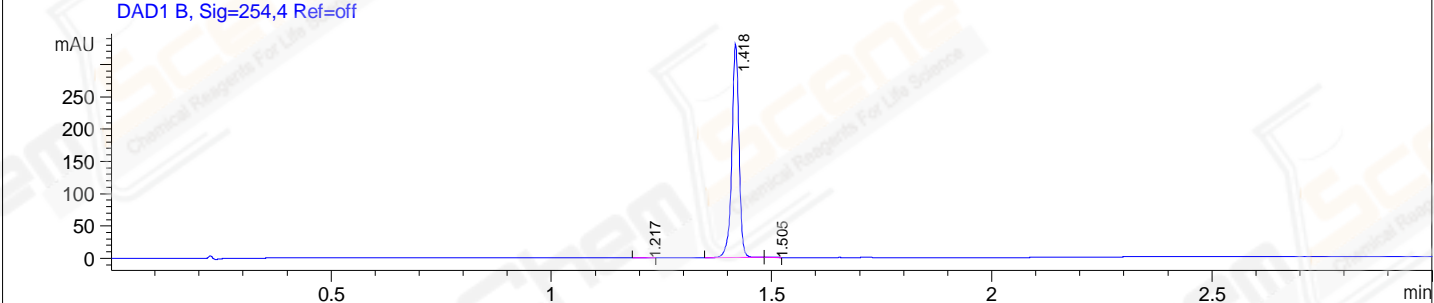
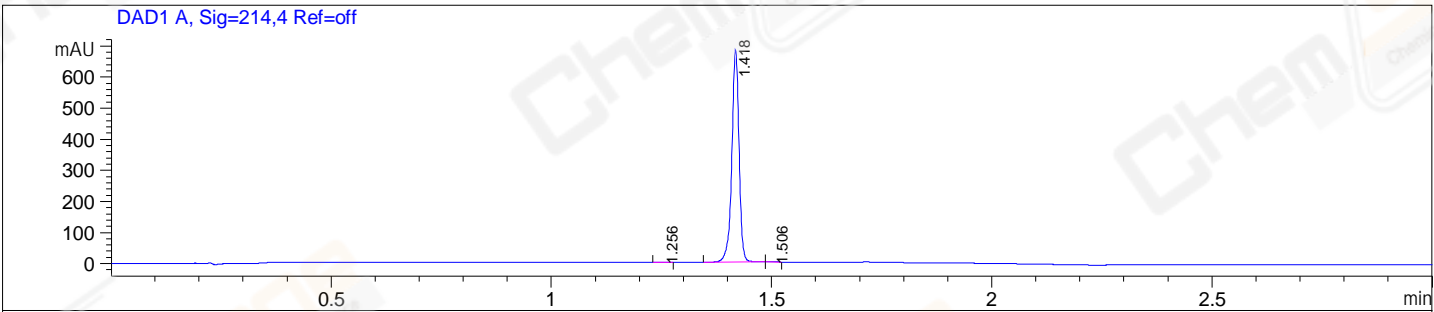


File E:\ChemStation\1\DATA\2024\2024-03\2024-03-14\BIZ2024-314-SCH1-UPLC-MS-10-028990.D
 Injection Date : 14-Mar-24, 17:25:11 Tgt Mass(EZX) :
 Sample Name : BIZ2024-314-SCH1 Location : P2-E-06
 Acq. Operator : LY_2278 Inj : 1
 Spec. Reported : MS Integration Inj Volume : 0.8 ul
 Acq. Method : E:\ChemStation\1\Methods\1-POS-UPLC3.0MIN(1.2)(150-2000).M
 Analysis Method : E:\CHEMSTATION\1\METHODS\1-POS-UPLC3.0MIN(1.2)(150-2000).M
 CAS NO. : 2170484-59-8 WalkUp method: '1-POS-3MIN-(150-2000)' Project: BIZ2024
 Method Info : Mobile Phase: A: water(0.01%TFA) B:ACN(0.01%TFA)
 Gradient: 5% to 95%B within 2.0 min
 Flow Rate :1.2ml/min
 Column :Shim-pack Scepter C18-120, 3.0*33mm,3um
 Oven Temperature : 45C



Integration Results for DAD1 A, Sig=214,4 Ref=off

RetTim	Width	Area	Height	Area%
1.26	0.02	0.49	0.51	0.06
1.42	0.02	779.21	680.61	99.88
1.51	0.02	0.45	0.43	0.06

Integration Results for DAD1 B, Sig=254,4 Ref=off

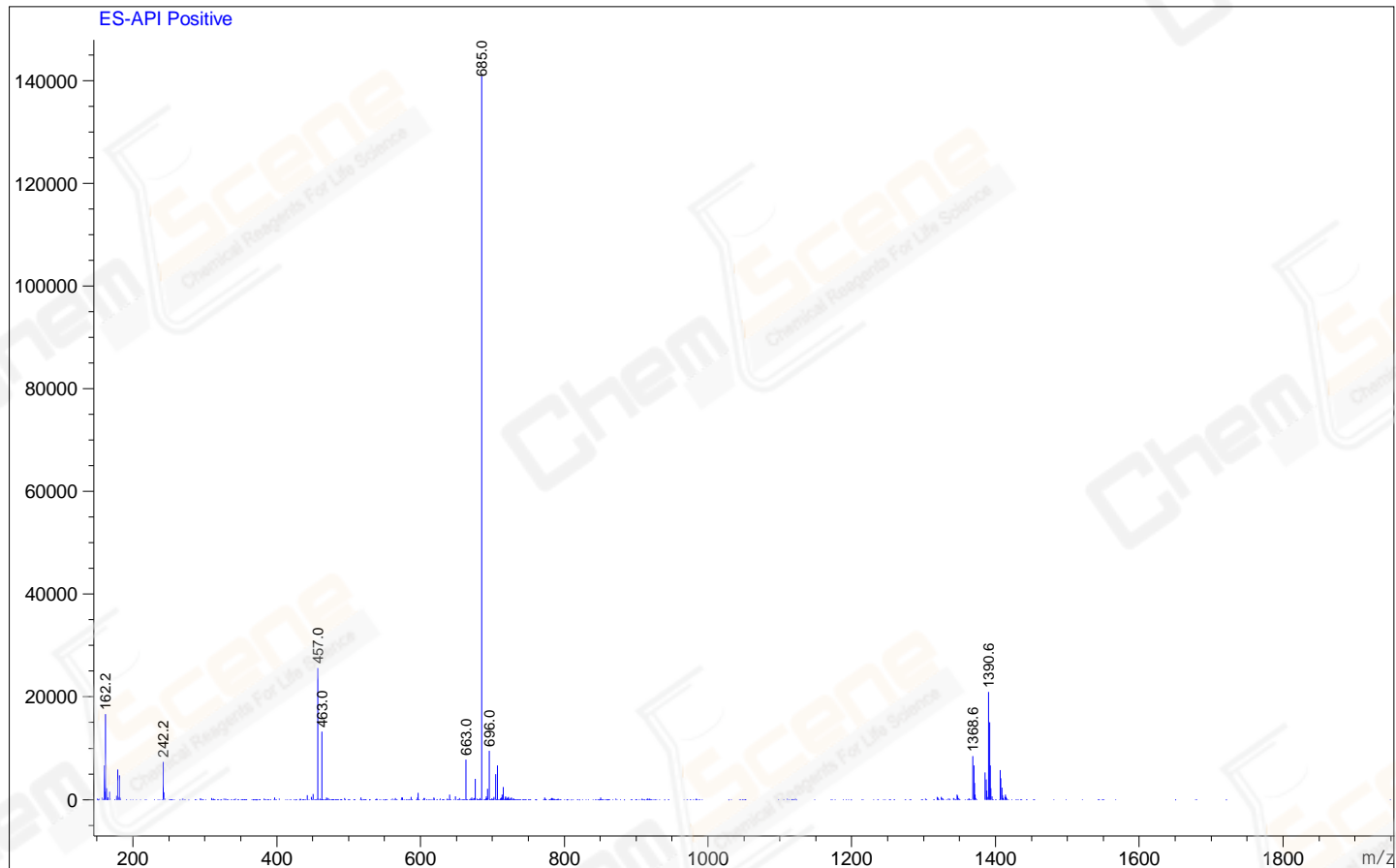
RetTim	Width	Area	Height	Area%
1.22	0.02	0.28	0.24	0.08
1.42	0.02	372.42	329.38	99.86
1.51	0.02	0.25	0.22	0.07

Integration Results for MSD1 TIC, MS File

RetTim	Width	Area	Height	Area%
1.42	0.06	6386820.00	1614696.13	100.00

Ret. Time: 1.42

<<<< POSITIVE SPECTRA >>>>



*** End of Report ***