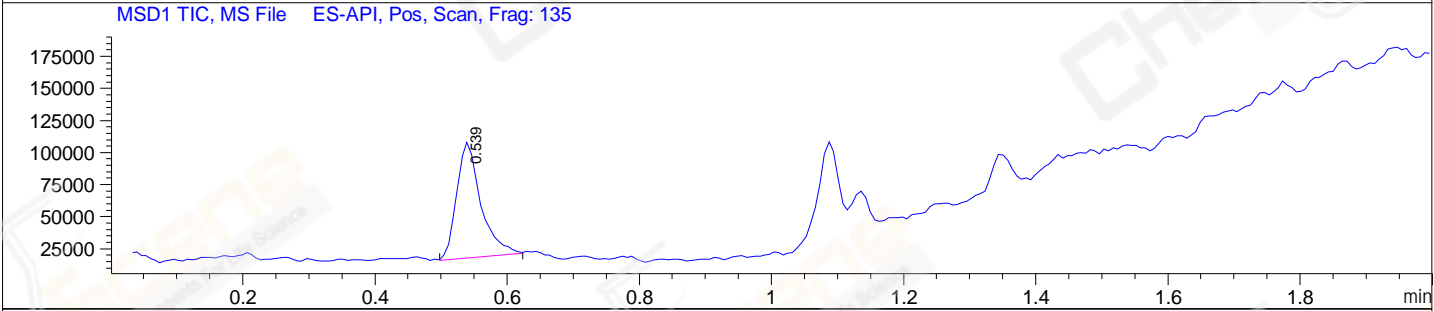
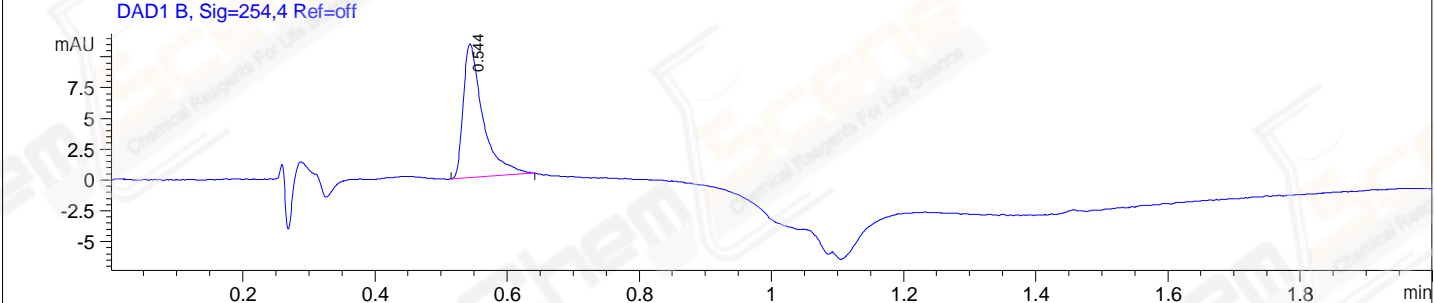
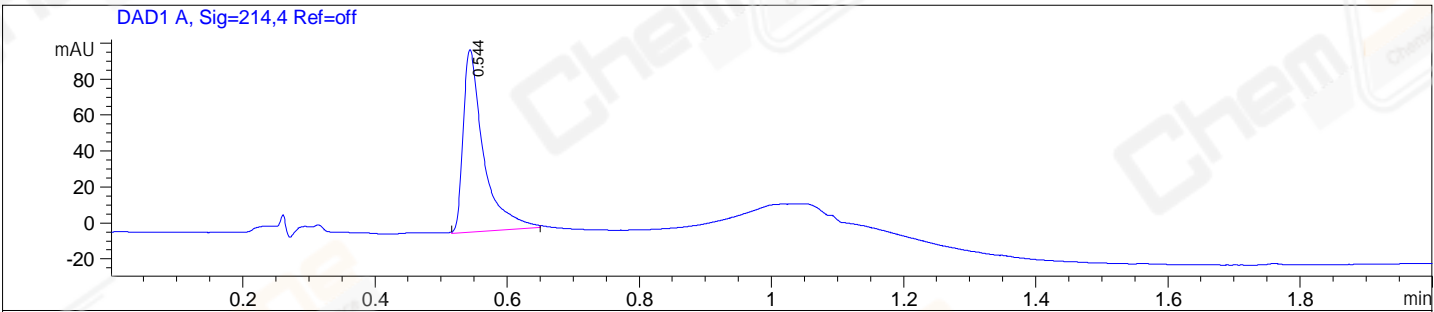


File D:\ChemStation\1\Data\20240613\20240613-3 2024-06-13 13-00-56\015-P2-A1-1705255@455001@LC
 Injection Date : 13-Jun-24, 13:56:07 Tgt Mass(EZX) :
 Sample Name : 1705255@455001@LCMS Location : P2-A-01
 Acq. Operator : admin Inj : 1
 Spec. Reported : MS Integration Inj Volume : 1 ul
 Acq. Method : D:\ChemStation\1\Data\20240613\20240613-3 2024-06-13 13-00-56\1-POS-2MIN(10
 Analysis Method : D:\ChemStation\1\Data\20240613\20240613-3 2024-06-13 13-00-56\1-POS-2MIN(10
 CAS NO. : 1806416-26-1
 Method Info : Mobile Phase: A: Water (0.01%TFA) B: ACN (0.01%TFA)
 Gradient: 5% to 95%B within 0.6min
 Flow Rate: 2.5ml/min
 Column: Welch XB-C18 4.6*50 3.5um
 Oven Temperature: 45 degree Celsius
 Guard Cartridges:XB-C18 4.6*10MM 3.5UM 120A



Integration Results for DAD1 A, Sig=214,4 Ref=off

RetTim	Width	Area	Height	Area%
0.54	0.04	216.85	101.49	100.00

Integration Results for DAD1 B, Sig=254,4 Ref=off

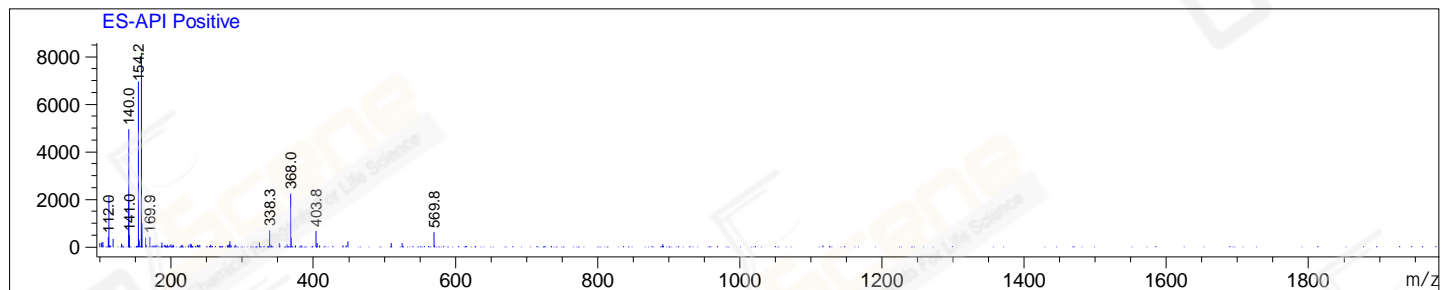
RetTim	Width	Area	Height	Area%
0.54	0.03	22.45	10.86	100.00

Integration Results for MSD1 TIC, MS File

RetTim	Width	Area	Height	Area%
0.54	0.04	228949.44	90926.78	100.00

Ret. Time: 0.54

<<<< POSITIVE SPECTRA >>>>



Base Peak Ion Ratios:

Ion	Mass	Abundance	Ratio
A	158.00	8177	100.00
A + 1	159.00	1002	12.25
A + 2	160.00	29	0.36

2nd Largest Peak Ion Ratios:

Ion	Mass	Abundance	Ratio
B	154.20	6960	100.00
B + 1	155.20	309	4.43
B + 2	156.20	55	0.79
B + 4	158.20	2299	33.03
B + 5	159.20	12	0.18

*** End of Report ***