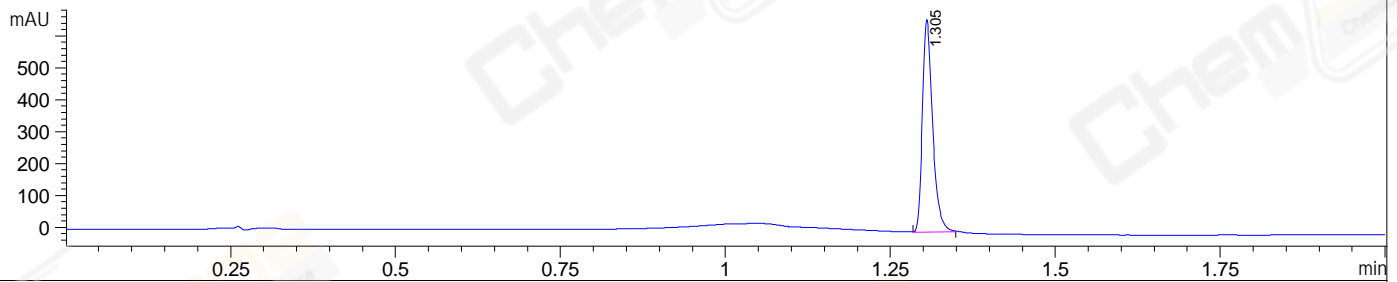
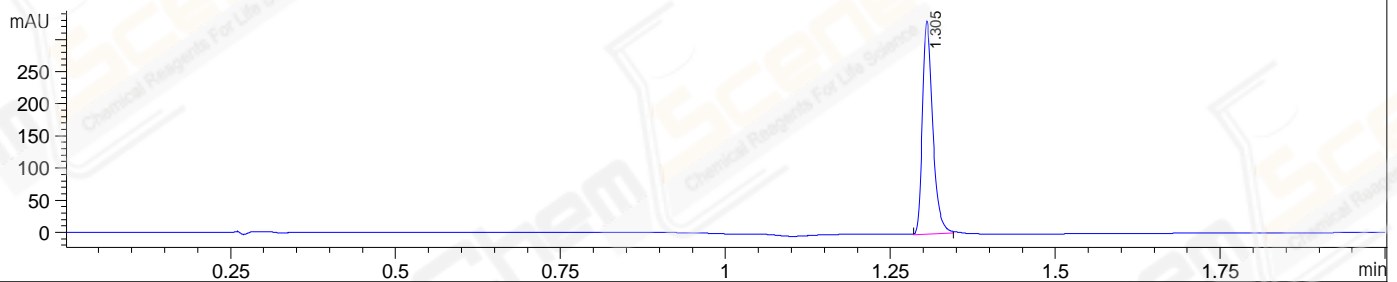


File C:\Users\Public\Documents\ChemStation\1\Data\20240701\20240701-1S 2024-07-01 10-21-22\037
Injection Date : 01-Jul-24, 12:40:33 Tgt Mass(EZX) :
Sample Name : 1237491@473559@LCMS Location : P1-D-10
Acq. Operator : admin Inj : 1
Spec. Reported : MS Integration Inj Volume : 1 ul
Acq. Method : C:\Users\Public\Documents\ChemStation\1\Data\20240701\20240701-1S 2024-07-0
Analysis Method : C:\Users\Public\Documents\ChemStation\1\Data\20240701\20240701-1S 2024-07-0
CAS NO. :150114-97-9
Method Info : Mobile Phase: A: Water (0.01%TFA) B: ACN (0.01%TFA)
Gradient: 5% to 95%B within 0.6min
Flow Rate: 2.5ml/min
Column: Welch XB-C18 4.6*50 3.5um
Oven Temperature: 45 degree Celsius
Guard Cartridges:XB-C18 4.6*10MM 3.5UM 120A

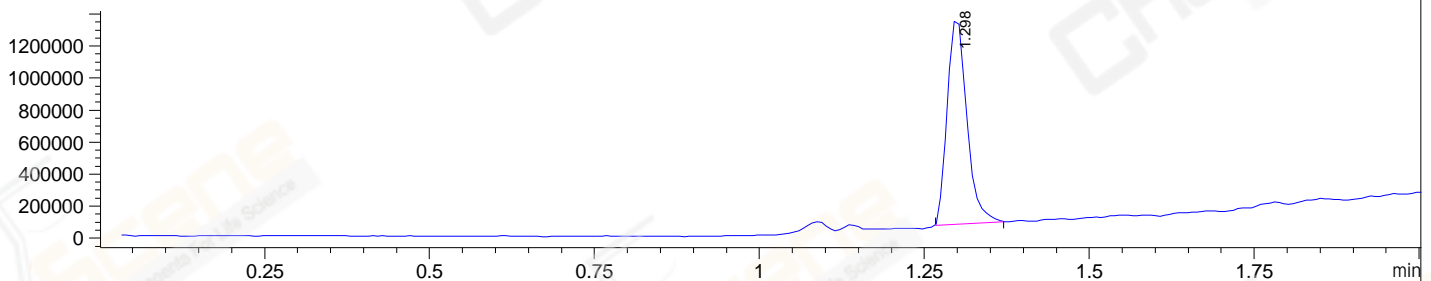
DAD1 A, Sig=214,4 Ref=off



DAD1 B, Sig=254,4 Ref=off



MSD1 TIC, MS File ES-API, Pos, Scan, Frag: 135



Integration Results for DAD1 A, Sig=214,4 Ref=off

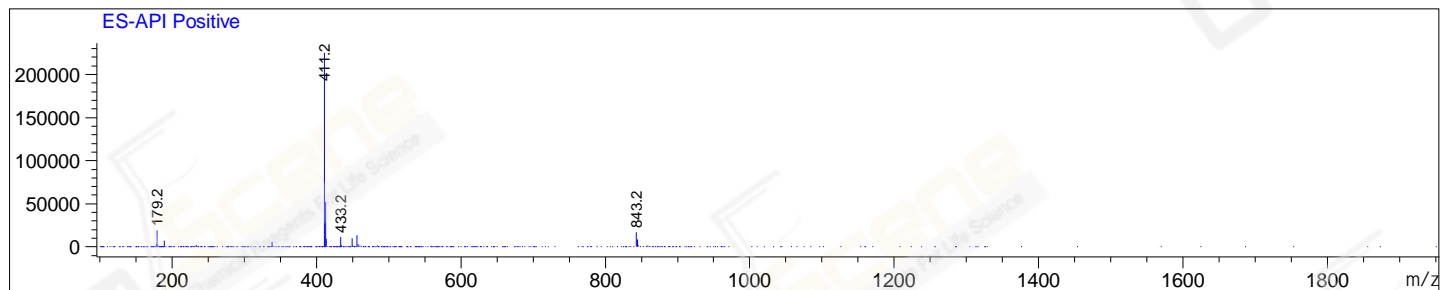
RetTim	Width	Area	Height	Area%
1.31	0.02	715.98	666.63	100.00

Integration Results for DAD1 B, Sig=254,4 Ref=off

RetTim	Width	Area	Height	Area%
1.31	0.02	358.64	332.35	100.00

Integration Results for MSD1 TIC, MS File

RetTim	Width	Area	Height	Area%
1.30	0.03	2657539.25	1312682.38	100.00



Base Peak Ion Ratios:

Ion	Mass	Abundance	Ratio
A	411.20	225432	100.00
A + 1	412.20	52230	23.17
A + 2	413.20	9591	4.25
A + 3	414.30	107	0.05
A + 4	415.20	1065	0.47
A + 5	416.20	65	0.03

2nd Largest Peak Ion Ratios:

Ion	Mass	Abundance	Ratio
B	179.20	18849	100.00
B + 1	180.20	2430	12.89
B + 2	181.20	32	0.17
B + 3	182.00	10	0.05
B + 4	183.00	77	0.41
B + 5	184.40	47	0.25