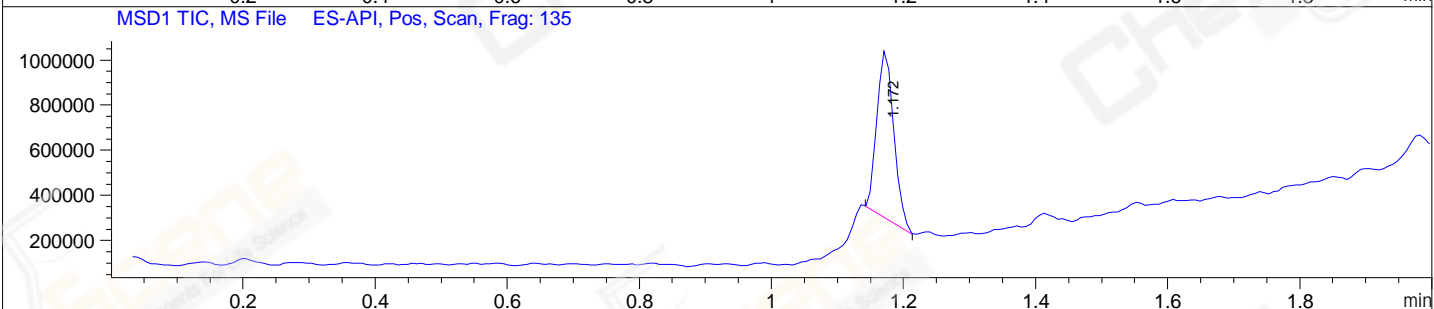
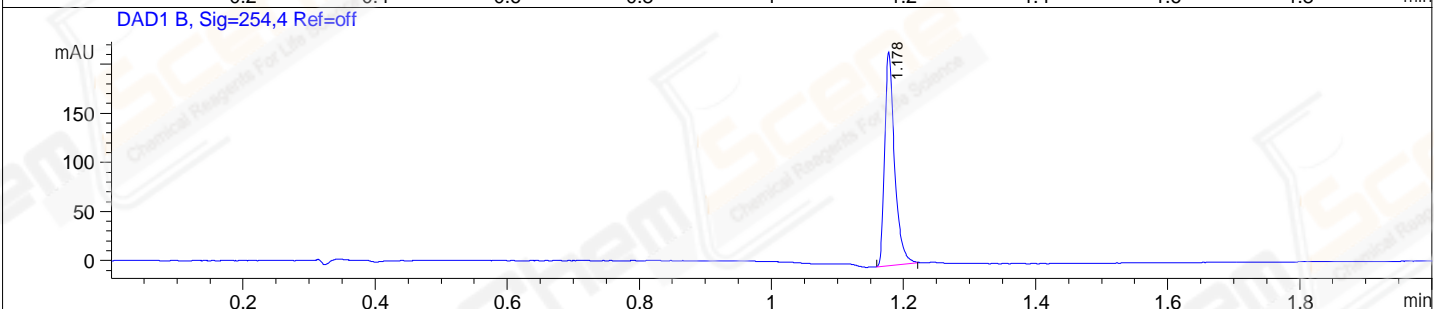
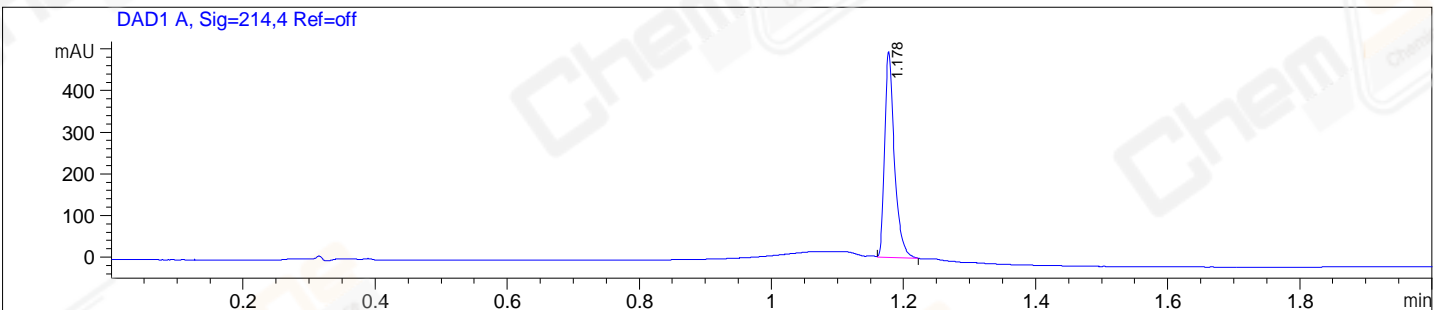


File D:\ChemStation\1\Data\20241010\20241010-1 2024-10-10 10-26-30\045-P2-B10-1034790@579777@L  
 Injection Date : 10-Oct-24, 13:16:00 Tgt Mass(EZX) :  
 Sample Name : 1034790@579777@LCMS Location : P2-B-10  
 Acq. Operator : pangliyuan Inj : 1  
 Spec. Reported : MS Integration Inj Volume : 1 ul  
 Acq. Method : D:\ChemStation\1\Data\20241010\20241010-1 2024-10-10 10-26-30\1-POS-2MIN(10  
 Analysis Method : D:\ChemStation\1\Data\20241010\20241010-1 2024-10-10 10-26-30\1-POS-2MIN(10  
 CAS NO. : 530-59-6  
 Method Info : Mobile Phase: A: Water (0.01%TFA) B: ACN (0.01%TFA)  
 Gradient: 5% to 95%B within 0.6min  
 Flow Rate: 2.5ml/min  
 Column: Welch XB-C18 4.6\*50 3.5um  
 Oven Temperature: 45 degree Celsius  
 Guard Cartridges:XB-C18 4.6\*10MM 3.5UM 120A



Integration Results for DAD1 A, Sig=214,4 Ref=off

RetTim	Width	Area	Height	Area%
1.18	0.02	506.83	495.53	100.00

Integration Results for DAD1 B, Sig=254,4 Ref=off

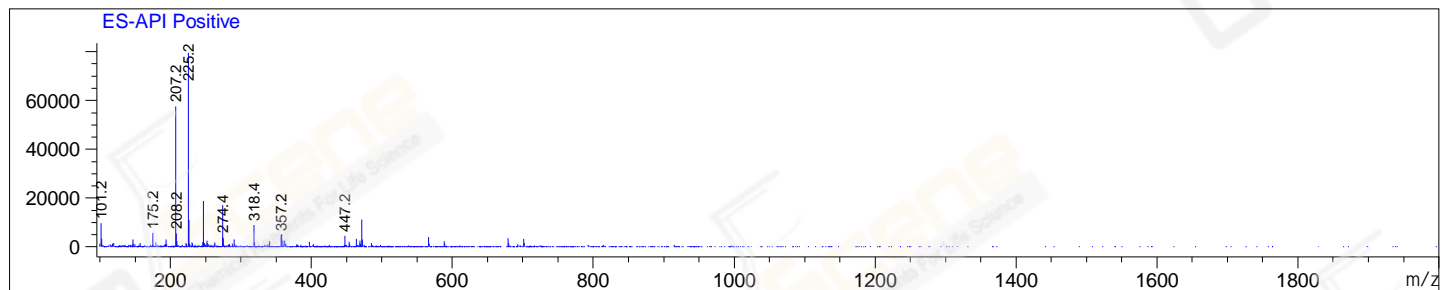
RetTim	Width	Area	Height	Area%
1.18	0.02	226.73	218.54	100.00

Integration Results for MSD1 TIC, MS File

RetTim	Width	Area	Height	Area%
1.17	0.03	1323923.13	741350.38	100.00

Ret. Time: 1.17

<<<< POSITIVE SPECTRA >>>>



Base Peak Ion Ratios:

2nd Largest Peak Ion Ratios:

Ion	Mass	Abundance	Ratio
A	225.20	79654	100.00
A + 1	226.20	10964	13.76
A + 2	227.20	1456	1.83
A + 3	228.20	526	0.66
A + 4	229.20	59	0.07
A + 5	230.30	1772	2.22

Ion	Mass	Abundance	Ratio
B	207.20	57553	100.00
B + 1	208.20	5647	9.81
B + 2	209.20	2300	4.00
B + 3	210.20	390	0.68
B + 4	210.80	635	1.10
B + 5	212.20	48	0.08

\*\*\* End of Report \*\*\*