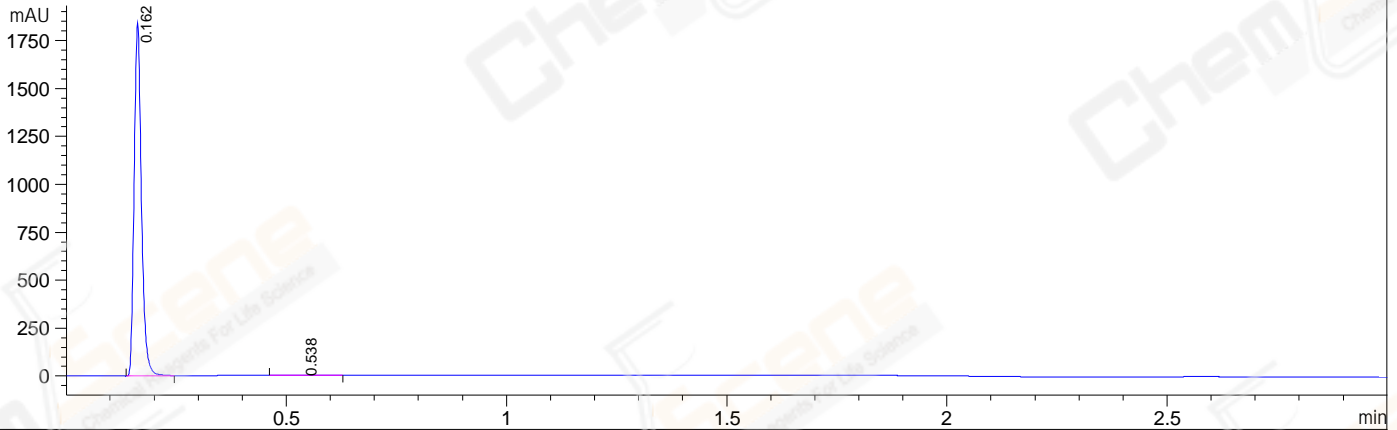
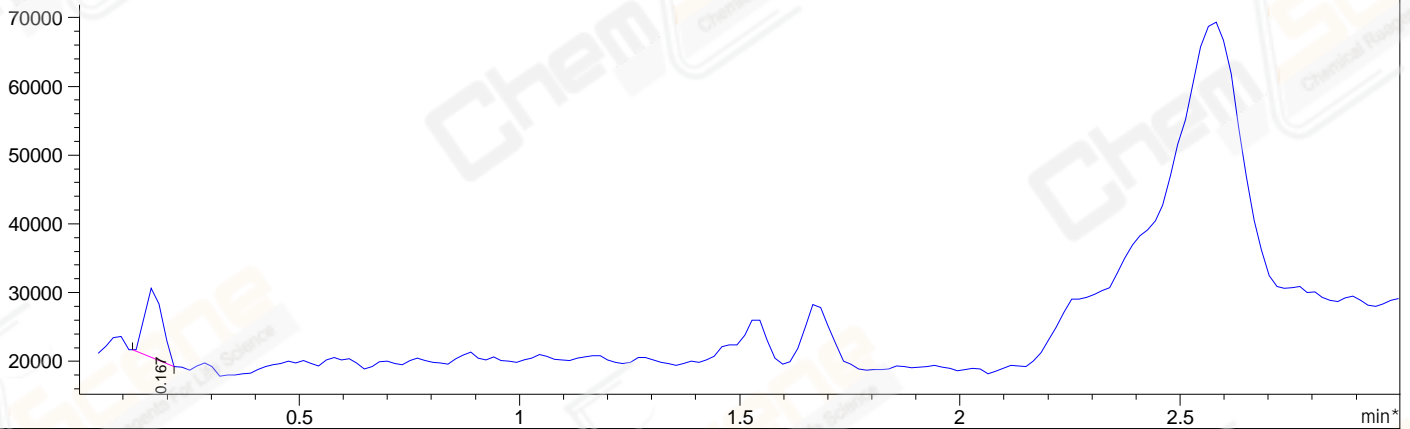


File E:\ChemStation\1\DATA\2024\2024-07\2024-07-19\BIZ2024-718-WLQ16-UPLC-MS-10-039564.D  
 Injection Date : 19-Jul-24, 12:16:46 Tgt Mass(EZX) :  
 Sample Name : BIZ2024-718-WLQ16 Location : P2-C-01  
 Acq. Operator : LY\_2278 Inj : 1  
 Spec. Reported : MS Integration Inj Volume : 0.8 ul  
 Acq. Method : E:\ChemStation\1\Methods\1-POS-UPLC3.0MIN(1.2)(150-1000).M  
 Analysis Method : E:\CHEMSTATION\1\METHODS\1-POS-UPLC3.0MIN(1.2)(150-1000).M  
 CAS NO. : 106627-54-7 WalkUp method: '1-POS-3MIN' Project: BIZ2024  
 Method Info : Mobile Phase: A: water(0.01%TFA) B:ACN(0.01%TFA)  
 Gradient: 5% to 95%B within 4.0 min  
 Flow Rate : 0.5ml/min  
 Column : ZORBAX SB-Aq, 3.0\*100mm,3.5um  
 Oven Temperature : 45C

DAD1 A, Sig=214,4 Ref=off



\*MSD1 TIC, MS File ES-API, Pos, Scan, Frag: 70



Integration Results for DAD1 A, Sig=214,4 Ref=off

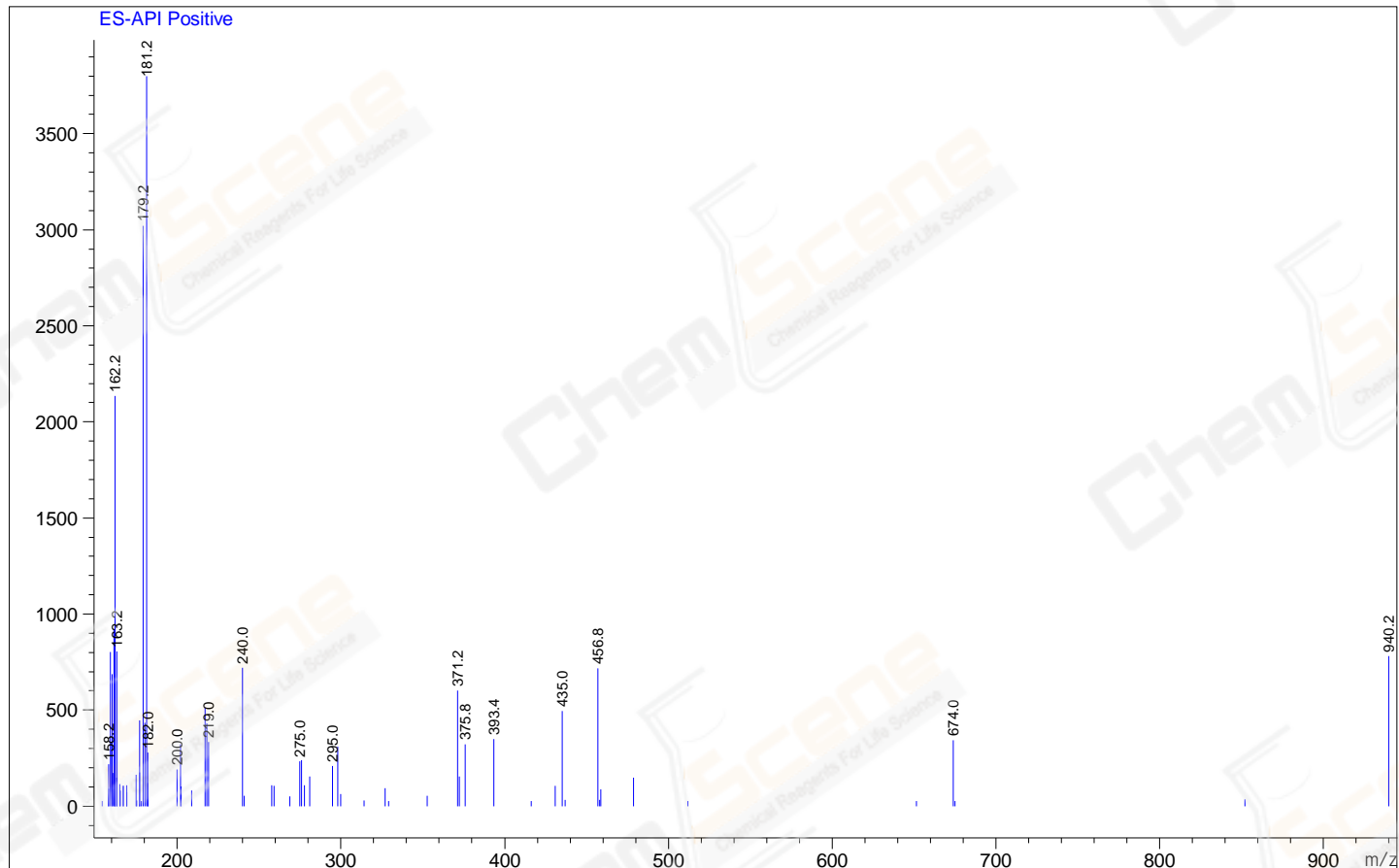
RetTim	Width	Area	Height	Area%
0.16	0.02	2125.37	1841.32	99.86
0.54	0.04	3.03	1.01	0.14

Integration Results for MSD1 TIC, MS File

RetTim	Width	Area	Height	Area%
0.17	0.05	28115.09	10200.32	100.00

Ret. Time: 0.17

<<<< POSITIVE SPECTRA >>>>



\*\*\* End of Report \*\*\*