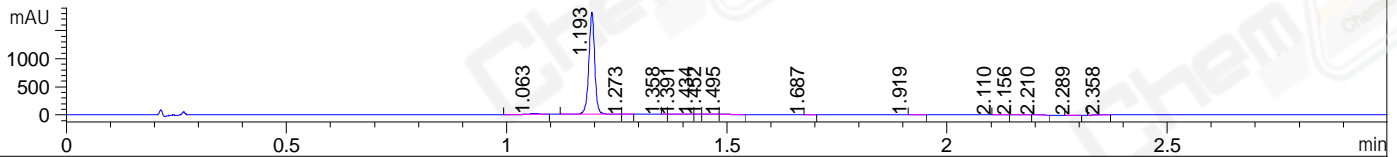
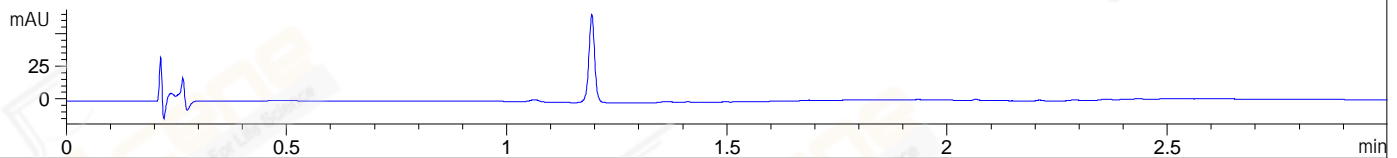


File ..Data\20171129\20171129-2\LJ2017-1128-0027.D Tgt Mass (CHM):
Injection Date : 29 Nov 17 8:51 pm +0800 Seq. Line : 78
Sample Name : LJ2017-1128-0027 Location : P1-F-11
Acq. Operator : SYSTEM Inj : 1
Spec. Reported : MS Integration Inj Volume : 1 ul
Acq. Method : D:\LCMS03\Data\20171129\20171129-2\1-POS-3MIN(1.2ML).M
Analysis Method : D:\LCMS03\Data\20171129\20171129-2\1-POS-3MIN(1.2ML).M
Catalog No : CS-W019006 Batch#La1128027
Method Info : Mobile Phase: A: water(0.01%TFA) B:ACN(0.01%TFA)
Gradient: 5% to 95%B within 1.3 min
Flow Rate :1.2ml/min
Column :Poroshell 120 EC-C18, 3.0*50mm,2.7um A-RP-170
Oven Temperature : 45C

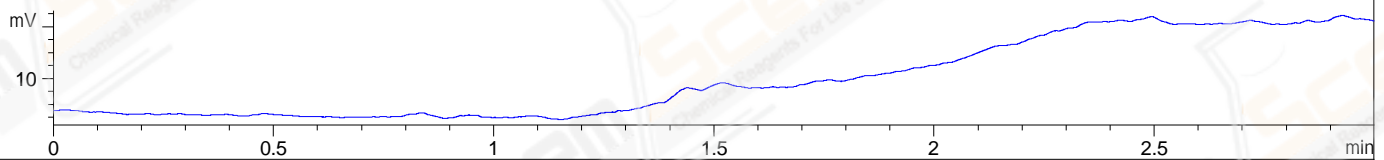
DAD1 A, Sig=214,4 Ref=off



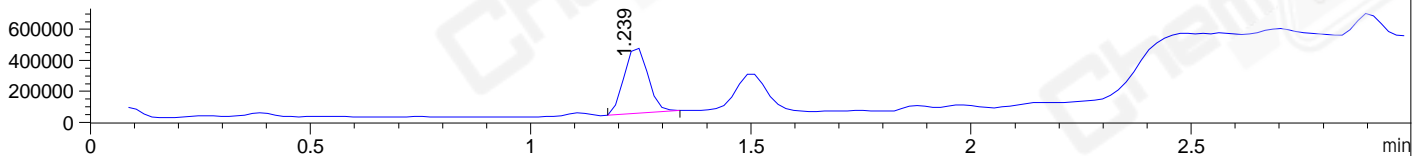
DAD1 B, Sig=254,4 Ref=off



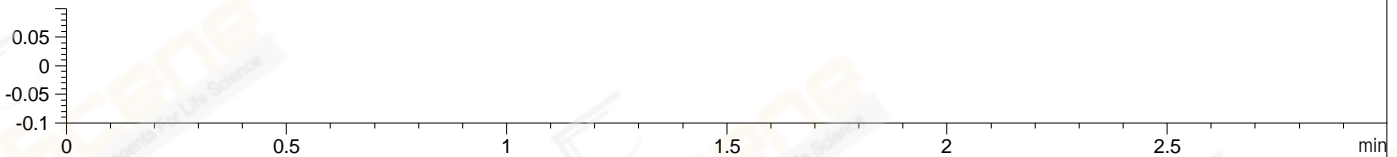
ELS1 A, ELSD Signal



MSD1 TIC, MS File ES-API, Pos, Scan, Frag: 70



Ion 1, MSD1 1, Target Mass 0 +H Positive, EIC=0.7:1.7



Integration Results for DAD1 A, Sig=214,4 Ref=off

RetTim	Width	Area	Height	Area%	MS (+)
1.06	0.02	28.27	20.02	1.65	169
1.19	0.01	1676.72	1804.88	97.67	145
1.27	0.01	1.07	1.66	0.06	145
1.36	0.01	0.05	0.12	0.00	145
1.39	0.01	3.88	4.72	0.23	145
1.43	0.01	0.40	0.86	0.02	589
1.45	0.01	0.87	1.04	0.05	702
1.50	0.01	2.02	2.75	0.12	702
1.69	0.02	0.51	0.55	0.03	233
1.92	0.01	0.42	0.43	0.02	233
2.11	0.01	0.30	0.37	0.02	233
2.16	0.02	0.65	0.57	0.04	233
2.21	0.01	0.50	0.57	0.03	233
2.29	0.02	0.28	0.25	0.02	233
2.36	0.03	0.73	0.41	0.04	105

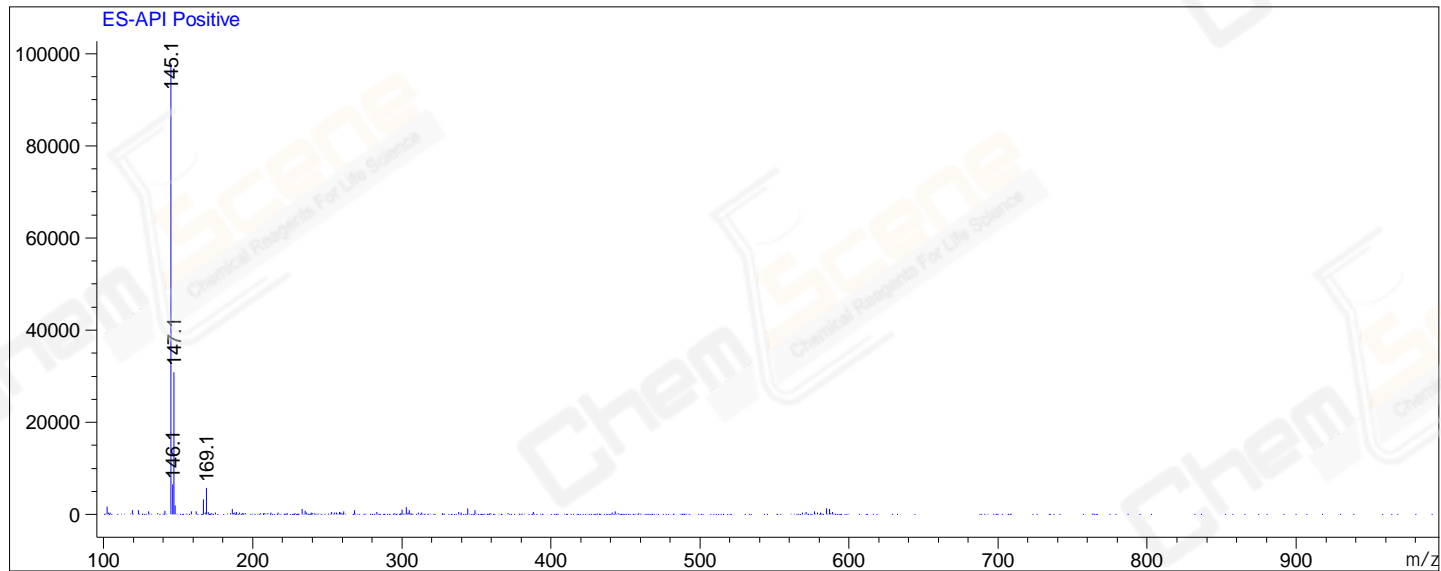
Integration Results for DAD1 B, Sig=254,4 Ref=off

RetTim	Width	Area	Height	Area%	MS (+)
--------	-------	------	--------	-------	--------

Integration Results for MSD1 TIC, MS File

RetTime	Width	Area	Height	Area%	MS (+)
1.24	0.06	1606987.25	430919.78	100.00	145

Ret. Time: 1.24 <<<< POSITIVE SPECTRA >>>>



*** End of Report ***