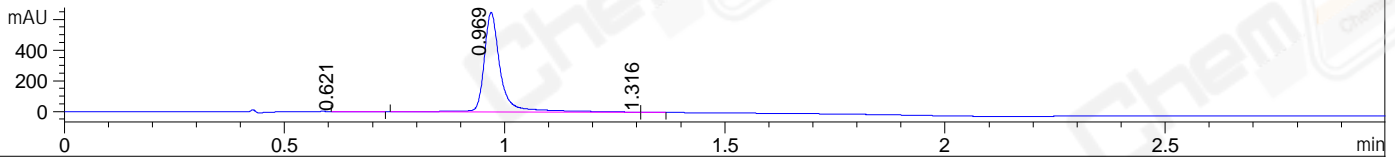
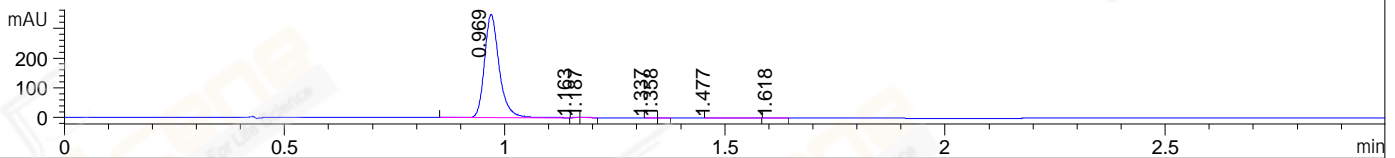


File ..3\Data\20190328\20190328\LJ2019-0327-0030.D Tgt Mass (CHM):  
 Injection Date : 28 Mar 19 1:47 pm +0800 Seq. Line : 43  
 Sample Name : LJ2019-0327-0030 Location : P1-D-04  
 Acq. Operator : SYSTEM Inj : 1  
 Spec. Reported : MS Integration Inj Volume : 1 ul  
 Acq. Method : D:\LCMS03\Data\20190328\20190328\1-POS-3MIN.M  
 Analysis Method : D:\LCMS03\Data\20190328\20190328\1-POS-3MIN.M  
 Catalog No : CS-W008459 Batch# Lc0327031  
 Method Info : Mobile Phase: A: water(0.01%TFA) B:ACN(0.01%TFA)  
 Gradient: 5% to 95%B within 1.3 min  
 Flow Rate :1.8ml/min  
 Column :SunFire C18, 4.6\*50mm,3.5um A-RP-392  
 Oven Temperature : 45C

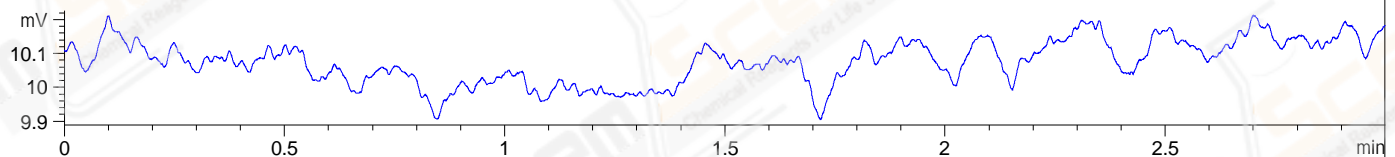
DAD1 A, Sig=214,4 Ref=off



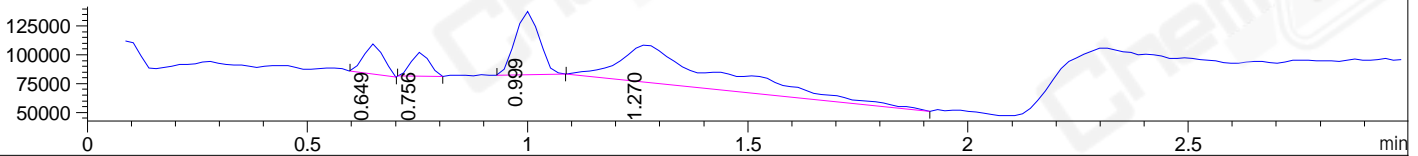
DAD1 B, Sig=254,4 Ref=off



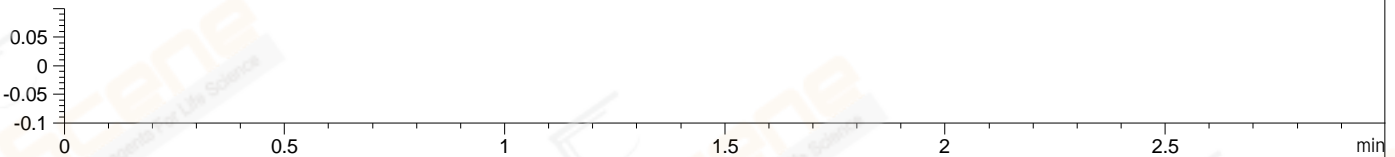
ELS1 A, ELSD Signal



MSD1 TIC, MS File ES-API, Pos, Scan, Frag: 70



Ion 1, MSD1 1, Target Mass 0 +H Positive, EIC=0.7:1.7



Integration Results for DAD1 A, Sig=214,4 Ref=off

RetTim	Width	Area	Height	Area%	MS (+)
0.62	0.06	1.69	0.37	0.10	130
0.97	0.04	1687.68	647.74	99.87	130
1.32	0.03	0.54	0.31	0.03	130

Integration Results for DAD1 B, Sig=254,4 Ref=off

RetTim	Width	Area	Height	Area%	MS (+)
0.97	0.04	803.13	346.44	99.72	130
1.16	0.01	0.09	0.13	0.01	130
1.19	0.02	0.71	0.65	0.09	130
1.34	0.01	0.17	0.20	0.02	130
1.36	0.01	0.11	0.14	0.01	130
1.48	0.04	0.85	0.32	0.11	130
1.62	0.02	0.32	0.21	0.04	130

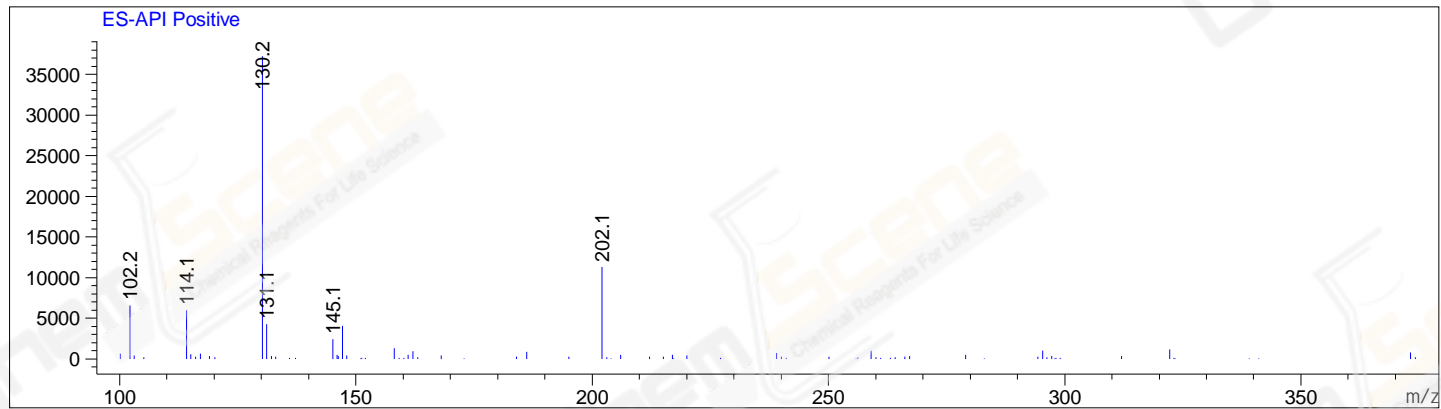
Integration Results for ELS1 A, ELSD Signal

RetTim	Width	Area	Height	Area%	MS (+)
--------	-------	------	--------	-------	--------

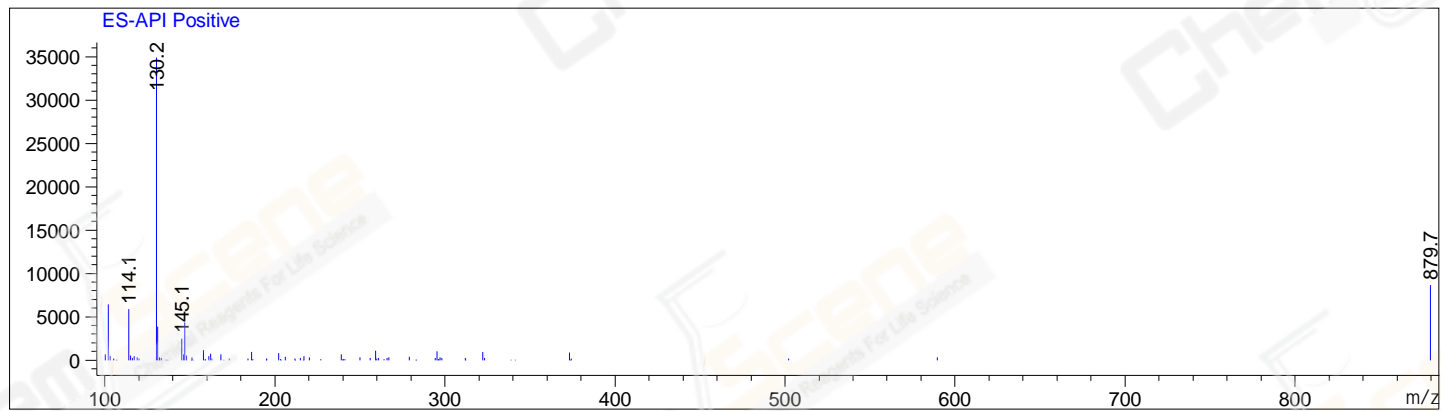
## Integration Results for MSD1 TIC, MS File

RetTime	Width	Area	Height	Area%	MS (+)
0.65	0.05	80179.68	26116.64	9.10	130
0.76	0.05	59660.41	20597.02	6.77	130
1.00	0.06	207811.16	54936.50	23.58	130
1.27	0.21	533500.69	32107.78	60.55	130

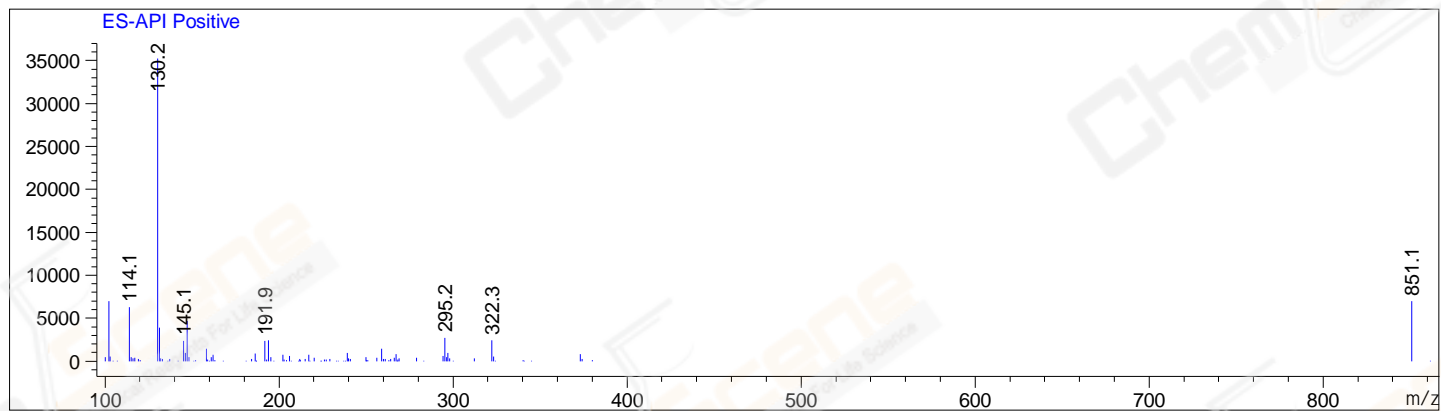
Ret. Time: 0.65 &lt;&lt;&lt;&lt; POSITIVE SPECTRA &gt;&gt;&gt;&gt;



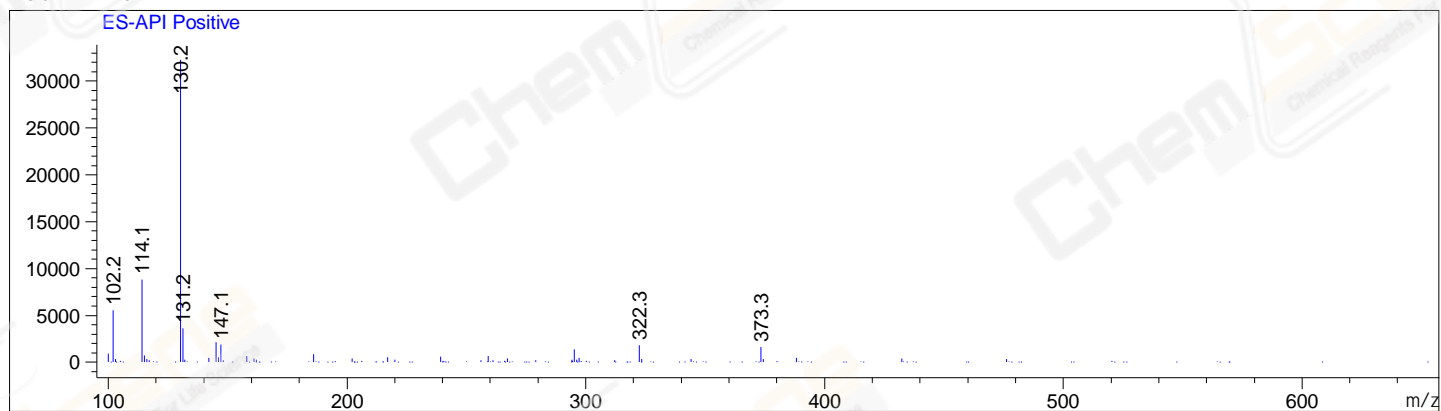
Ret. Time: 0.76



Ret. Time: 1.00



Ret. Time: 1.27



\*\*\* End of Report \*\*\*