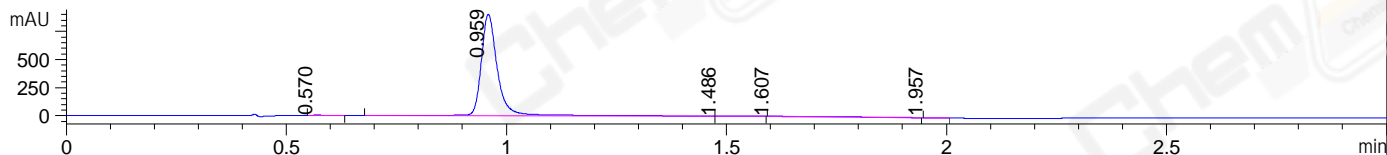
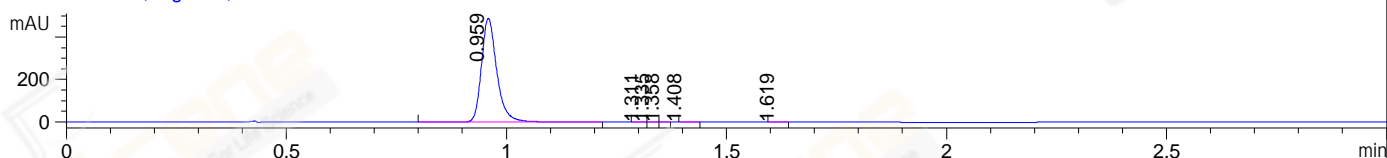


File ..3\Data\20190329\20190329\LJ2019-0329-0035.D Tgt Mass (CHM):
 Injection Date : 29 Mar 19 3:40 pm +0800 Seq. Line : 89
 Sample Name : LJ2019-0329-0035 Location : P2-B-06
 Acq. Operator : SYSTEM Inj : 1
 Spec. Reported : MS Integration Inj Volume : 1 ul
 Acq. Method : D:\LCMS03\Data\20190329\20190329\1-POS-3MIN.M
 Analysis Method : D:\LCMS03\Data\20190329\20190329\1-POS-3MIN.M
 Catalog No : CS-W008459 Batch#Lc0329037
 Method Info : Mobile Phase: A: water(0.01%TFA) B:ACN(0.01%TFA)
 Gradient: 5% to 95%B within 1.3 min
 Flow Rate :1.8ml/min
 Column :SunFire C18, 4.6*50mm,3.5um A-RP-392
 Oven Temperature : 45C

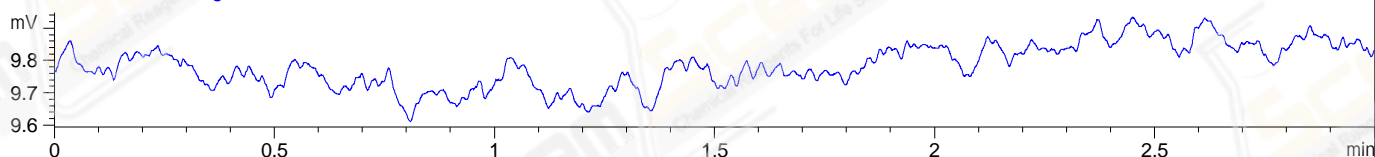
DAD1 A, Sig=214,4 Ref=off



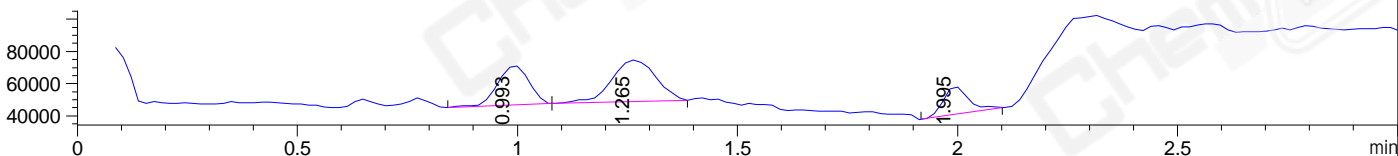
DAD1 B, Sig=254,4 Ref=off



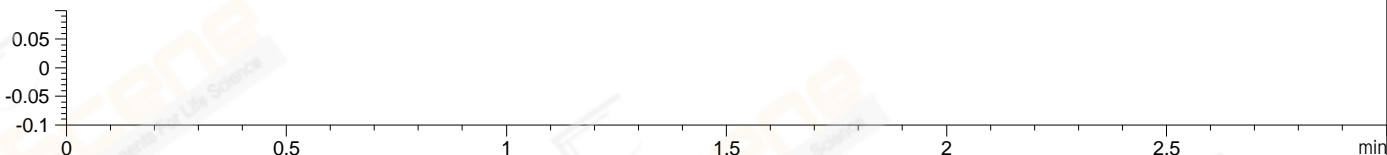
ELS1 A, ELSD Signal



MSD1 TIC, MS File ES-API, Pos, Scan, Frag: 70



Ion 1, MSD1 1, Target Mass 0 +H Positive, EIC=0.7:1.7



Integration Results for DAD1 A, Sig=214,4 Ref=off

RetTim	Width	Area	Height	Area%	MS (+)
0.57	0.02	6.41	4.59	0.27	114
0.96	0.04	2355.86	902.74	98.68	114
1.49	0.05	1.51	0.38	0.06	114
1.61	0.28	22.41	0.96	0.94	114
1.96	0.02	1.08	0.71	0.05	114

Integration Results for DAD1 B, Sig=254,4 Ref=off

RetTim	Width	Area	Height	Area%	MS (+)
0.96	0.04	1179.67	487.49	99.94	114
1.31	0.01	0.09	0.11	0.01	114
1.33	0.01	0.10	0.13	0.01	114
1.36	0.01	0.09	0.13	0.01	114
1.41	0.02	0.16	0.13	0.01	114
1.62	0.02	0.27	0.20	0.02	114

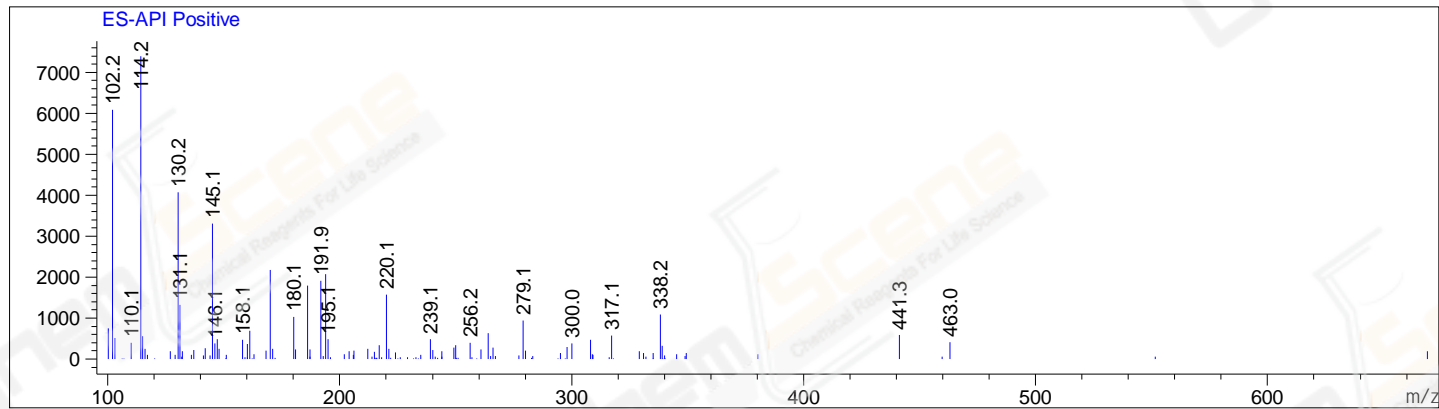
Integration Results for ELS1 A, ELSD Signal

Integration Results for MSD1 TIC, MS File

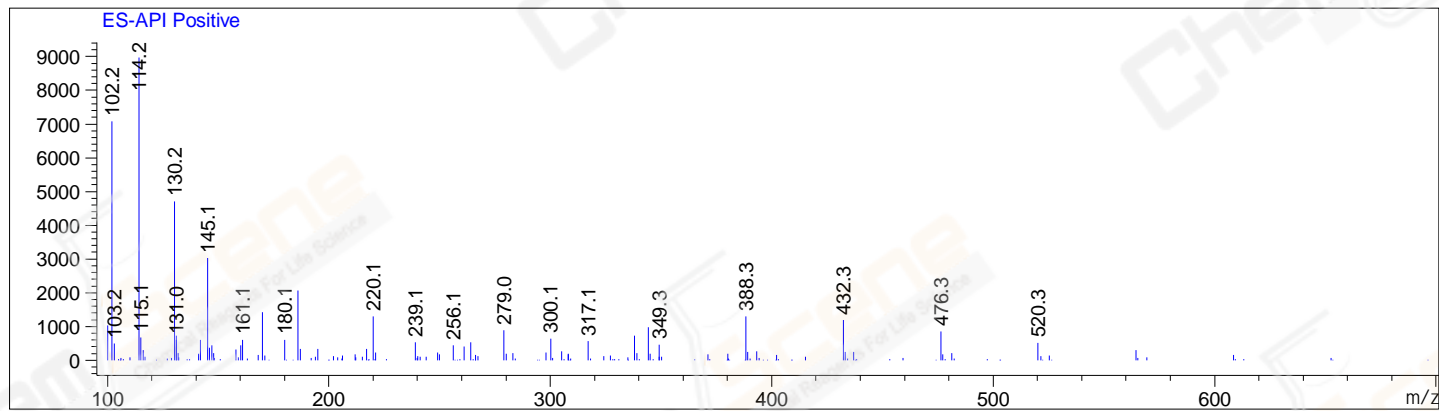
RetTim	Width	Area	Height	Area%	MS (+)
0.99	0.08	119741.09	24387.05	32.68	114
1.26	0.11	179572.97	25699.06	49.01	114
2.00	0.06	67049.94	17239.61	18.30	114

RetTim	Width	Area	Height	Area%	MS (+)
--------	-------	------	--------	-------	--------

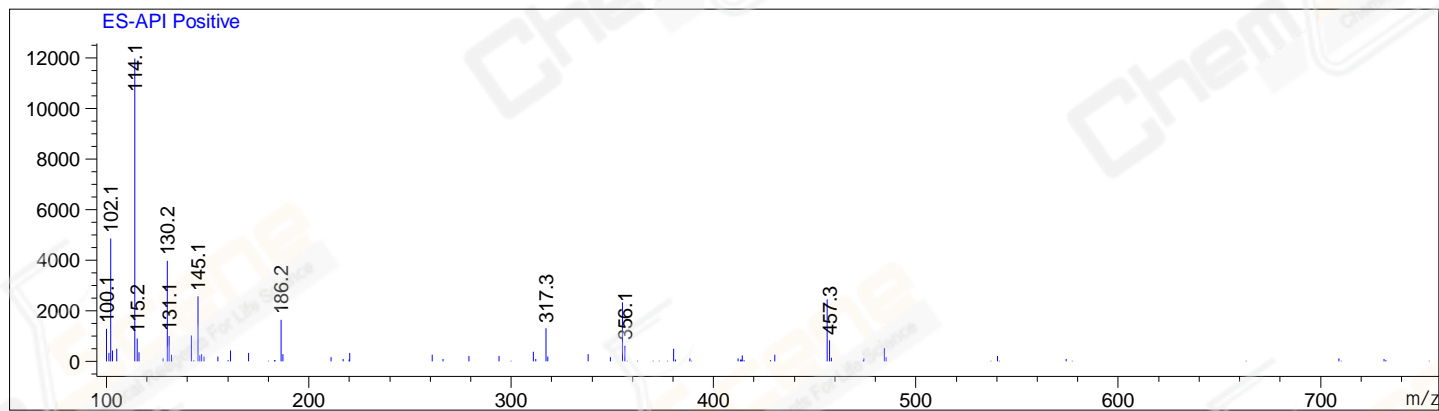
Ret. Time: 0.99 <<<< POSITIVE SPECTRA >>>>



Ret. Time: 1.26



Ret. Time: 2.00



*** End of Report ***