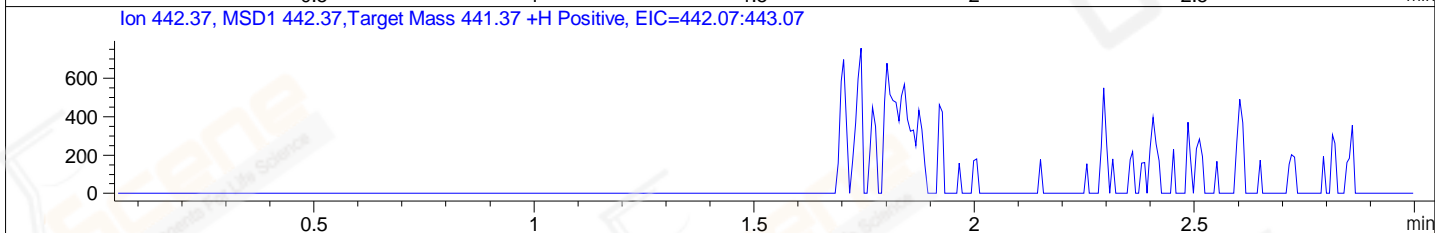
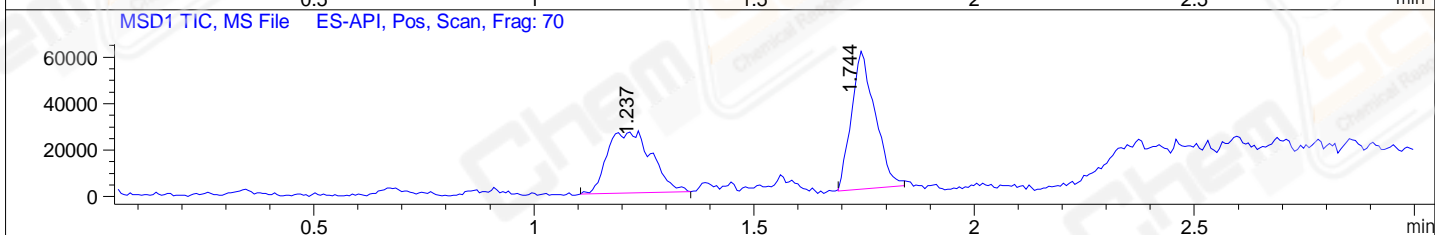
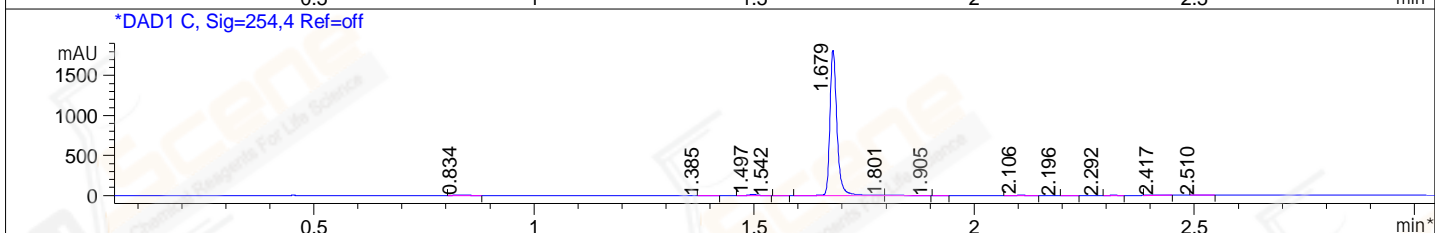
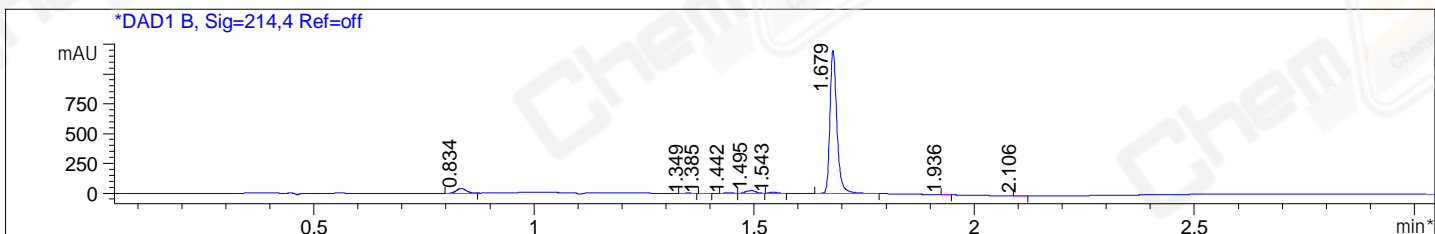


File D:\CHEM32\1\DATA\CPK\CPK2017-313-13529.D Tgt Mass (EZX): 441.37  
Injection Date : 13 Mar 17 3:33 pm +0800 Seq. Line : 0  
Sample Name : CPK2017-313-13529 Location : P2-B-06  
Acq. Operator : GZZ\_718 Inj : 1  
Spec. Reported : MS Integration Inj Volume : 2 ul  
Acq. Method : D:\Chem32\1\METHODS\1-POS-3MIN.M  
Analysis Method : D:\CHEM32\1\METHODS\1-POS-3MIN-PROSRSS.M  
Catalog No : CS-3496 Batch#Lc0723038 Easy-Access Method: '1-POS-3MIN' 441.37  
Method Info : Mobile Phase: A: water(0.01%TFA) B:ACN(0.01%TFA)  
Gradient: 5% to 95%B within 1.3 min  
Flow Rate :1.8ml/min  
Column :SunFire C18, 4.6\*50mm,3.5um A-RP-186  
Oven Temperature : 45C



Integration Results for DAD1 B, Sig=214,4 Ref=off

RetTim	Width	Area	Height	Area%	MS (+)
0.83	0.03	64.30	40.85	4.46	ND
1.35	0.02	1.32	0.90	0.09	ND
1.38	0.02	0.82	0.82	0.06	ND
1.44	0.02	4.21	3.49	0.29	ND
1.49	0.03	34.59	22.81	2.40	ND
1.54	0.02	11.14	9.66	0.77	ND
1.68	0.02	1322.02	1213.70	91.71	420
1.94	0.01	0.65	0.72	0.04	ND
2.11	0.02	2.46	2.73	0.17	ND

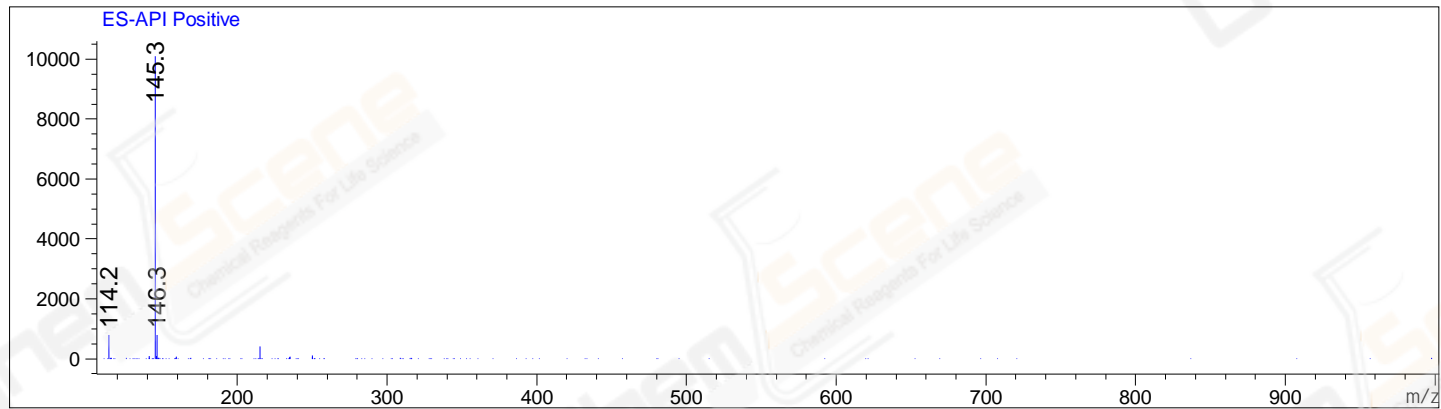
Integration Results for DAD1 C, Sig=254,4 Ref=off

RetTim	Width	Area	Height	Area%	MS (+)
0.83	0.03	8.47	5.16	0.41	ND
1.38	0.02	0.84	0.76	0.04	ND
1.50	0.02	17.84	16.83	0.85	ND
1.54	0.02	0.79	0.16	0.04	ND
1.68	0.02	2025.58	1825.14	97.02	420

1.80	0.05	10.55	3.54	0.51	420
1.90	0.02	0.78	0.03	0.04	ND
2.11	0.02	11.03	10.08	0.53	ND
2.20	0.02	2.19	0.35	0.10	233
2.29	0.02	2.80	-0.04	0.13	159
2.42	0.03	4.08	2.09	0.20	159
2.51	0.03	2.97	1.58	0.14	159

Ret. Time: 1.24

<<<< POSITIVE SPECTRA >>>>



Ret. Time: 1.74

