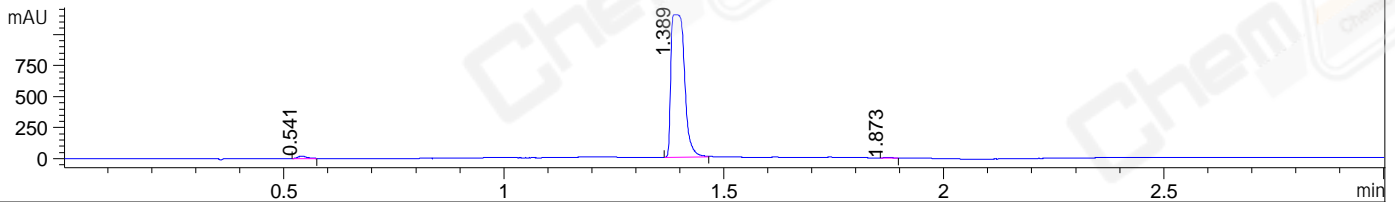
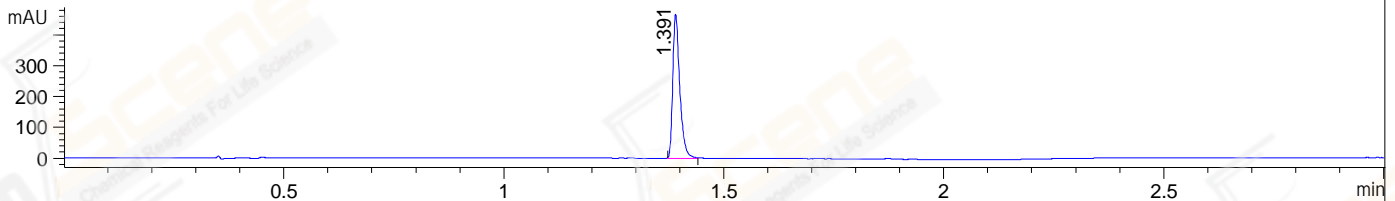


File ..M32\1\DATA\2019\20190821\704\LJ1908200031.D Tgt Mass (CHM):  
Injection Date : 21 Aug 19 7:39 pm +0800 Seq. Line : 44  
Sample Name : LJ1908200031 Location : P2-E-02  
Acq. Operator : ZJ\_1432 Inj : 1  
Spec. Reported : MS Integration Inj Volume : 1 ul  
Acq. Method : D:\Chem32\1\data\2019\20190821\704\1-POS-3MIN.M  
Analysis Method : D:\CHEM32\1\DATA\2019\20190821\704\1-POS-3MIN.M  
Catalog No : CS-0045108 Batch# Lc0820043  
Method Info : Mobile Phase: A: water(0.01%TFA) B:ACN(0.01%TFA)  
Gradient: 5% to 95%B within 1.3 min  
Flow Rate :1.8ml/min  
Column :SunFire C18, 4.6\*50mm,3.5um A-RP-433  
Oven Temperature : 45□

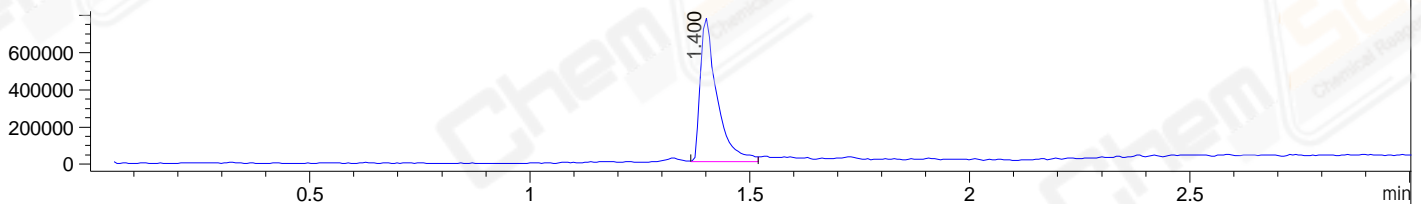
DAD1 B, Sig=214,4 Ref=off



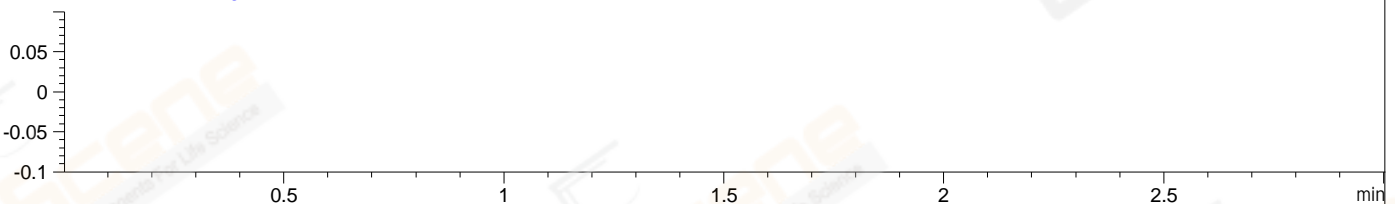
DAD1 C, Sig=254,4 Ref=off



MSD1 TIC, MS File ES-API, Pos, Scan, Frag: 70



Ion 1, MSD1 1, Target Mass 0 +H Positive, EIC=0.7:1.7



## Integration Results for DAD1 B, Sig=214,4 Ref=off

RetTim	Width	Area	Height	Area%	MS (+)
0.54	0.02	27.19	19.53	1.10	ND
1.39	0.03	2445.19	1147.74	98.64	168
1.87	0.02	6.63	6.12	0.27	168

## Integration Results for DAD1 C, Sig=254,4 Ref=off

RetTim	Width	Area	Height	Area%	MS (+)
1.39	0.02	516.32	466.73	100.00	168

## Integration Results for MSD1 TIC, MS File

RetTim	Width	Area	Height	Area%	MS (+)
1.40	0.04	2037923.25	771909.00	100.00	168

Ret. Time: 1.40

<<<< POSITIVE SPECTRA >>>>

ES-API Positive

