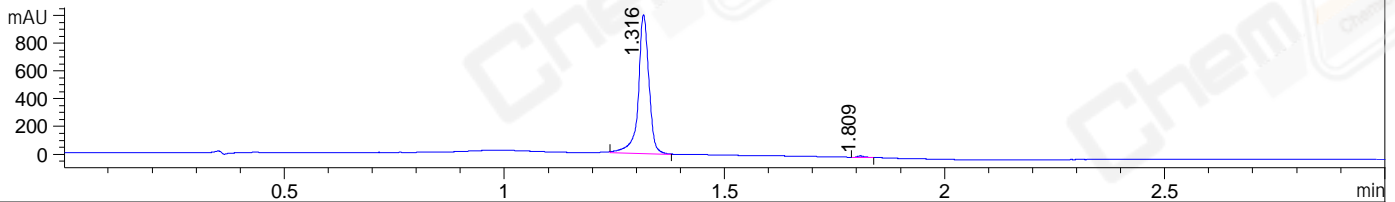
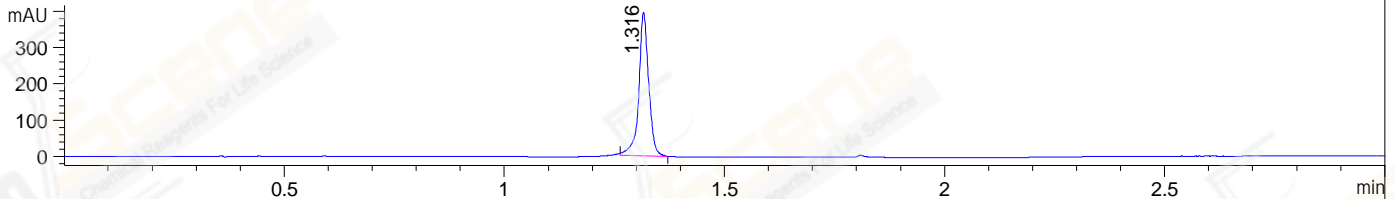


File ..M32\1\DATA\2019\20191106\757\LJ1911040057.D Tgt Mass (CHM):
 Injection Date : 6 Nov 19 12:06 pm +0800 Seq. Line : 40
 Sample Name : LJ1911040057 Location : P2-B-02
 Acq. Operator : ZJ_1432 Inj : 1
 Spec. Reported : MS Integration Inj Volume : 0.5 ul
 Acq. Method : D:\Chem32\1\data\2019\20191106\757\1-POS-3MIN.M
 Analysis Method : D:\CHEM32\1\DATA\2019\20191106\757\1-POS-3MIN.M
 CAS NO. : 91-56-5
 Method Info : Mobile Phase: A: water(0.01%TFA) B:ACN(0.01%TFA)
 Gradient: 5% to 95%B within 1.3 min
 Flow Rate :1.8ml/min
 Column :SunFire C18, 4.6*50mm,3.5um A-RP-433
 Oven Temperature : 45□

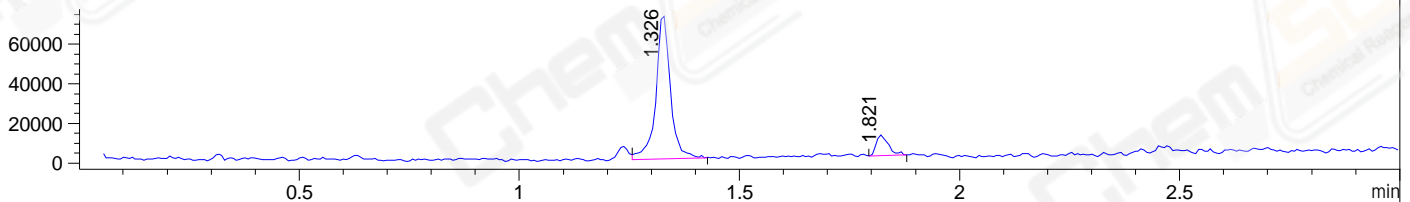
DAD1 B, Sig=214,4 Ref=off



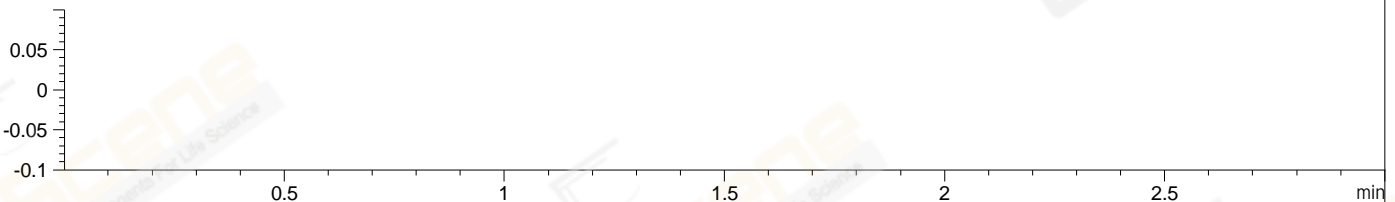
DAD1 C, Sig=254,4 Ref=off



MSD1 TIC, MS File ES-API, Pos, Scan, Frag: 70



Ion 1, MSD1 1, Target Mass 0 +H Positive, EIC=0.7:1.7



Integration Results for DAD1 B, Sig=214,4 Ref=off

RetTim	Width	Area	Height	Area%	MS(+)
1.32	0.02	1671.72	1002.77	99.21	148
1.81	0.02	13.28	11.22	0.79	651

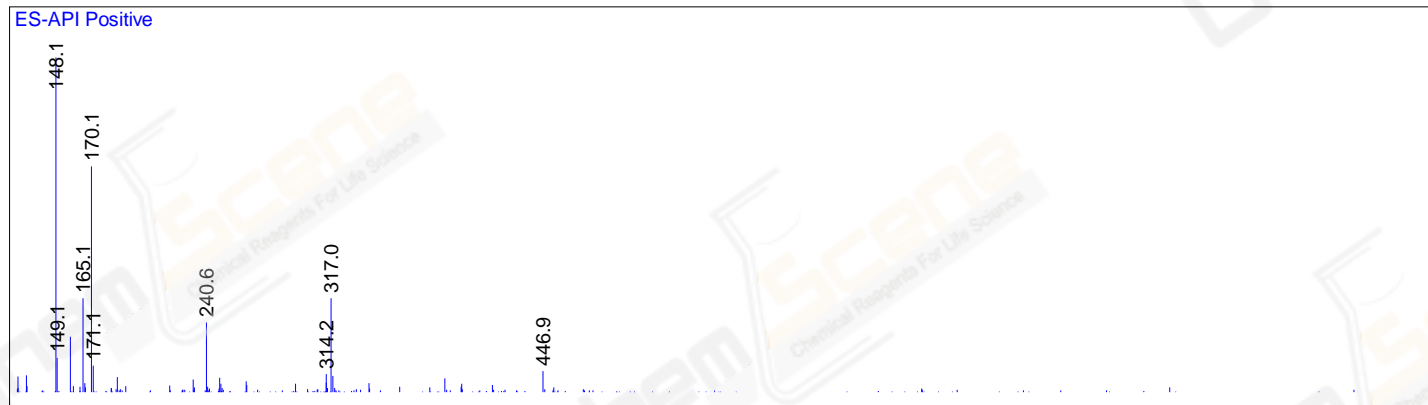
Integration Results for DAD1 C, Sig=254,4 Ref=off

RetTim	Width	Area	Height	Area%	MS(+)
1.32	0.02	616.53	395.16	100.00	148

Integration Results for MSD1 TIC, MS File

RetTim	Width	Area	Height	Area%	MS(+)
1.33	0.03	166311.58	73442.27	89.50	148
1.82	0.03	19507.98	10319.94	10.50	651

Ret. Time: 1.33 <<<< POSITIVE SPECTRA >>>>



Ret. Time: 1.82

