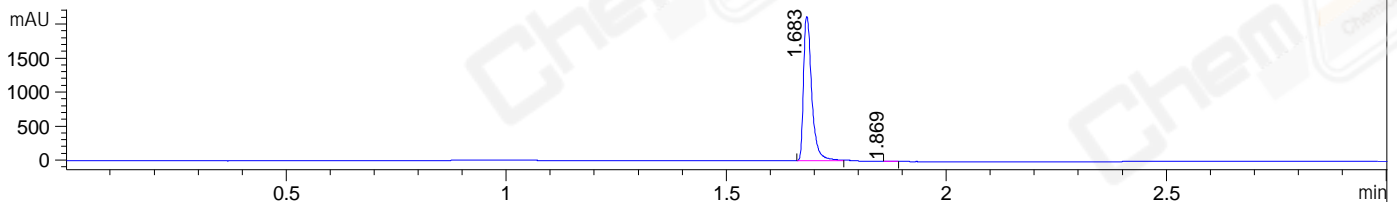
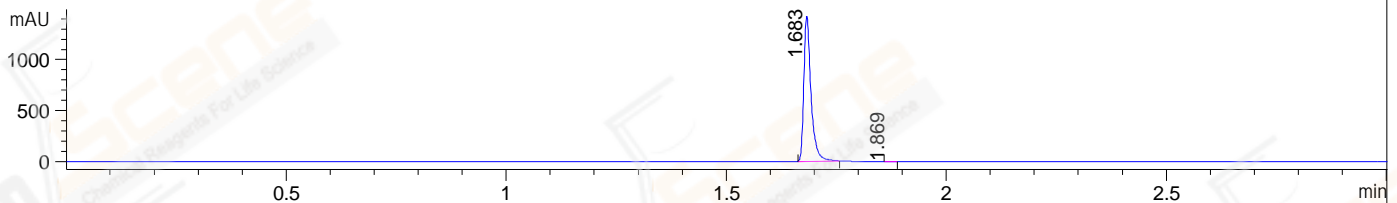


File ..M32\1\DATA\2019\20191120\761\LJ1911190140.D Tgt Mass (CHM):  
 Injection Date : 20 Nov 19 12:34 pm +0800 Seq. Line : 48  
 Sample Name : LJ1911190140 Location : P2-B-03  
 Acq. Operator : ZJ\_1432 Inj : 1  
 Spec. Reported : MS Integration Inj Volume : 0.3 ul  
 Acq. Method : D:\Chem32\1\data\2019\20191120\761\1-POS-3MIN.M  
 Analysis Method : D:\CHEM32\1\DATA\2019\20191120\761\1-POS-3MIN.M  
 CAS NO. : 338994-68-6  
 Method Info : Mobile Phase: A: water(0.01%TFA) B:ACN(0.01%TFA)  
 Gradient: 5% to 95%B within 1.3 min  
 Flow Rate :1.8ml/min  
 Column :SunFire C18, 4.6\*50mm,3.5um A-RP-433  
 Oven Temperature : 45□

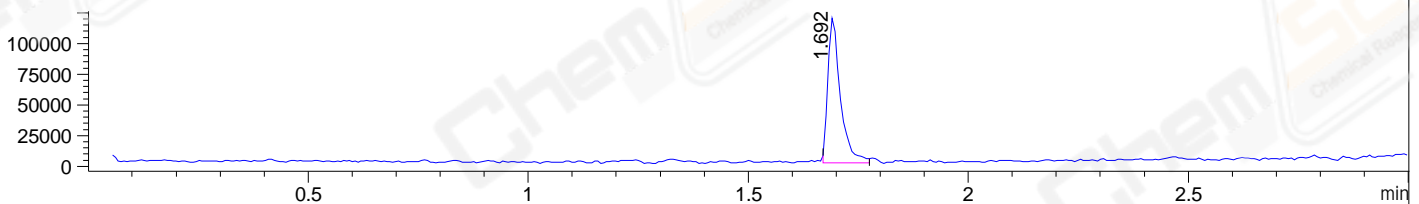
DAD1 B, Sig=214,4 Ref=off



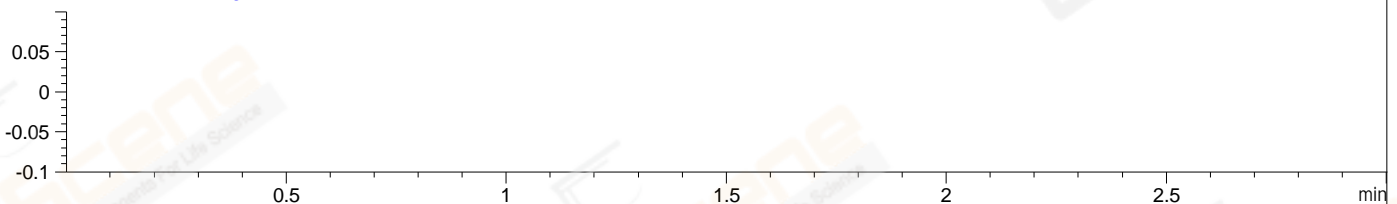
DAD1 C, Sig=254,4 Ref=off



MSD1 TIC, MS File ES-API, Pos, Scan, Frag: 70



Ion 1, MSD1 1, Target Mass 0 +H Positive, EIC=0.7:1.7



## Integration Results for DAD1 B, Sig=214,4 Ref=off

RetTim	Width	Area	Height	Area%	MS (+)
1.68	0.02	2763.08	2121.06	99.83	135
1.87	0.01	4.82	4.83	0.17	262

## Integration Results for DAD1 C, Sig=254,4 Ref=off

RetTim	Width	Area	Height	Area%	MS (+)
1.68	0.02	1626.87	1426.32	99.56	135
1.87	0.02	7.13	5.35	0.44	262

## Integration Results for MSD1 TIC, MS File

RetTim	Width	Area	Height	Area%	MS (+)
1.69	0.03	233573.22	118625.12	100.00	135

Ret. Time: 1.69

<<<< POSITIVE SPECTRA >>>>

