

File ..M32\1\DATA\2020\20200109\808\LJ2001080051.D Tgt Mass (CHM):

Injection Date : 9 Jan 20 2:43 pm +0800 Seq. Line : 77

Sample Name : LJ2001080051 Location : P2-B-03

Acq. Operator : ZJ_1432 Inj : 1

Spec. Reported : MS Integration Inj Volume : 0.3 ul

Acq. Method : D:\Chem32\1\data\2020\20200109\808\1-POS-3MIN.M

Analysis Method : D:\CHEM32\1\DATA\2020\20200109\808\1-POS-3MIN.M

Catalog No : CS-0103389

Method Info : Mobile Phase: A: water(0.01%TFA) B:ACN(0.01%TFA)

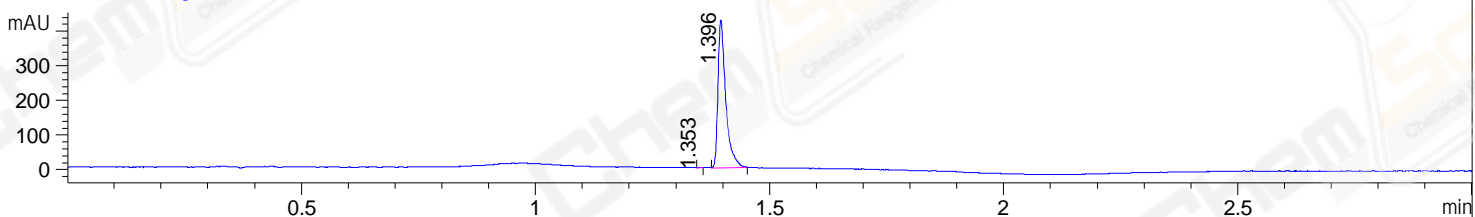
Gradient: 5% to 95%B within 1.3 min

Flow Rate :1.8ml/min

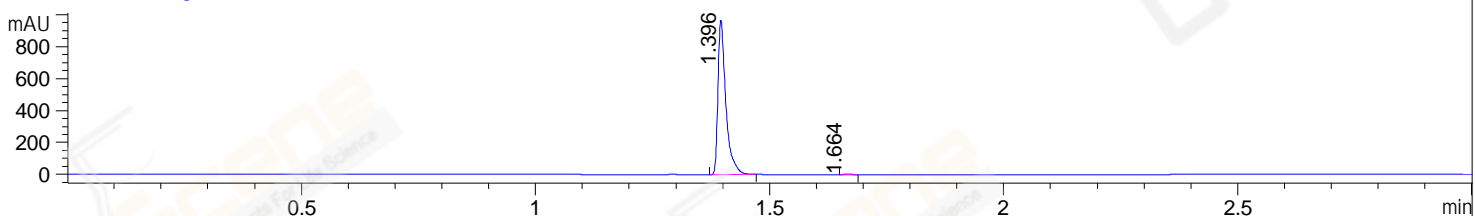
Column :SunFire C18, 4.6*50mm,3.5um A-RP-433

Oven Temperature : 45

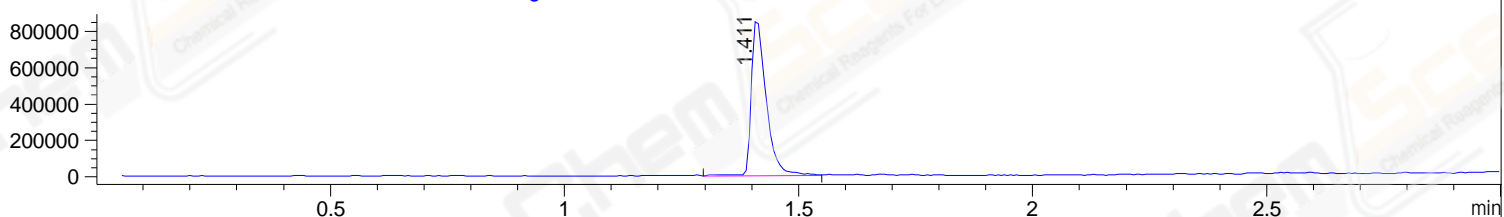
DAD1 B, Sig=214,4 Ref=off



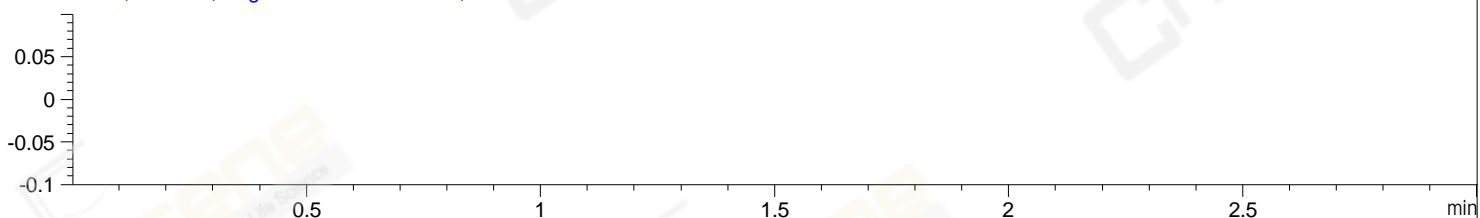
DAD1 C, Sig=254,4 Ref=off



MSD1 TIC, MS File ES-API, Pos, Scan, Frag: 70



Ion 1, MSD1 1, Target Mass 0 +H Positive, EIC=0.7:1.7



Integration Results for DAD1 B, Sig=214,4 Ref=off

RetTim	Width	Area	Height	Area%	MS (+)
1.35	0.01	0.56	0.98	0.11	ND
1.40	0.02	493.62	427.94	99.89	312

Integration Results for DAD1 C, Sig=254,4 Ref=off

RetTim	Width	Area	Height	Area%	MS (+)
1.40	0.02	1140.21	968.35	99.60	312
1.66	0.02	4.58	3.42	0.40	298

Integration Results for MSD1 TIC, MS File

RetTim	Width	Area	Height	Area%	MS (+)
1.41	0.03	1882581.38	875778.31	100.00	312

Ret. Time: 1.41

<<<< POSITIVE SPECTRA >>>>

ES-API Positive

