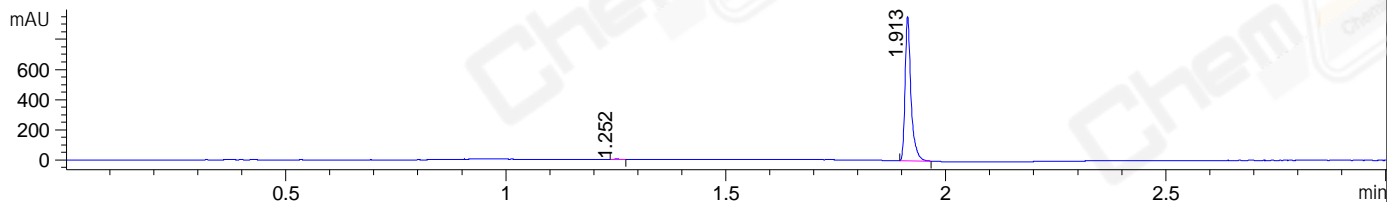
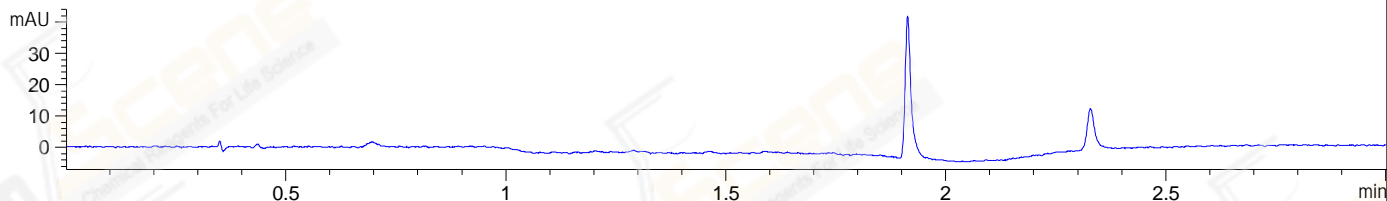


File ..32\1\DATA\2020\20200429\942\LJC2004291586.D Tgt Mass (CHM):  
 Injection Date : 29 Apr 20 2:32 pm +0800 Seq. Line : 58  
 Sample Name : LJC2004291586 Location : P2-C-07  
 Acq. Operator : ZJ\_1432 Inj : 1  
 Spec. Reported : MS Integration Inj Volume : 0.3 ul  
 Acq. Method : D:\Chem32\1\data\2020\20200429\942\1-POS-3MIN.M  
 Analysis Method : D:\CHEM32\1\DATA\2020\20200429\942\1-POS-3MIN.M  
 CAS NO. : 88-58-4  
 Method Info : Mobile Phase: A: water(0.01%TFA) B:ACN(0.01%TFA)  
 Gradient: 5% to 95%B within 1.3 min  
 Flow Rate :1.8ml/min  
 Column :SunFire C18, 4.6\*50mm,3.5um A-RP-607  
 Oven Temperature : 45□

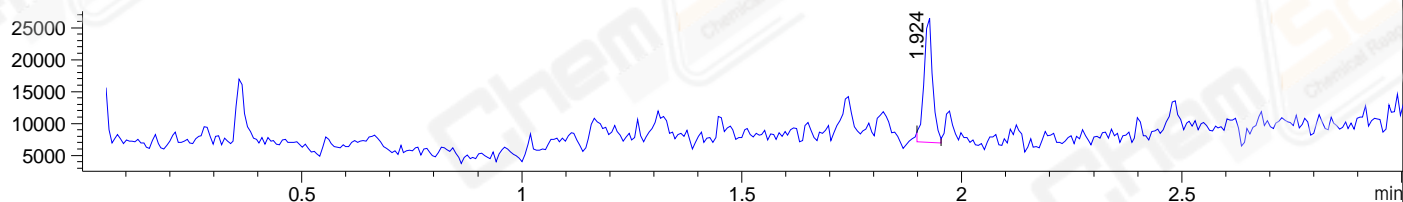
DAD1 B, Sig=214,4 Ref=off



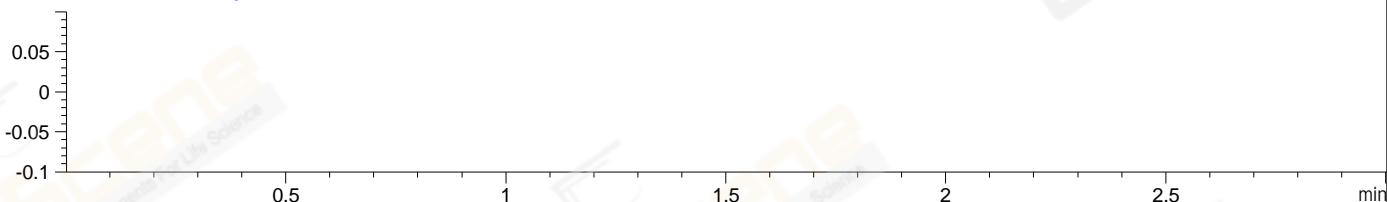
DAD1 C, Sig=254,4 Ref=off



MSD1 TIC, MS File ES-API, Pos, Scan, Frag: 70



Ion 1, MSD1 1, Target Mass 0 +H Positive, EIC=0.7:1.7



Integration Results for DAD1 B, Sig=214,4 Ref=off

RetTim	Width	Area	Height	Area%	MS(+)
1.25	0.01	2.50	3.25	0.28	252
1.91	0.01	900.04	956.80	99.72	252

Integration Results for DAD1 C, Sig=254,4 Ref=off

RetTim	Width	Area	Height	Area%	MS(+)

Integration Results for MSD1 TIC, MS File

RetTim	Width	Area	Height	Area%	MS(+)
1.92	0.02	26995.92	20049.82	100.00	252

Ret. Time: 1.92

<<<< POSITIVE SPECTRA >>>>

ES-API Positive

