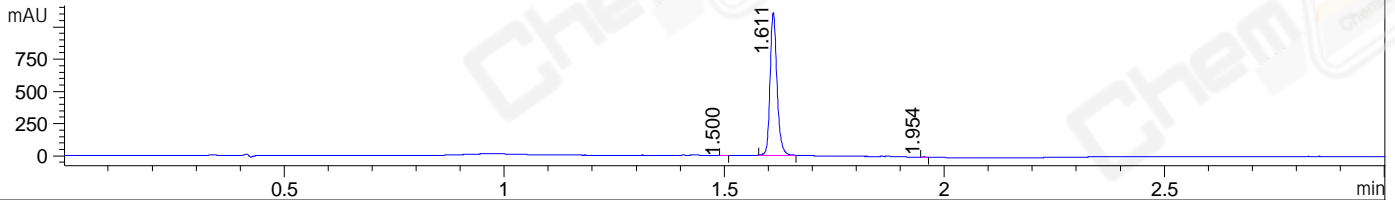
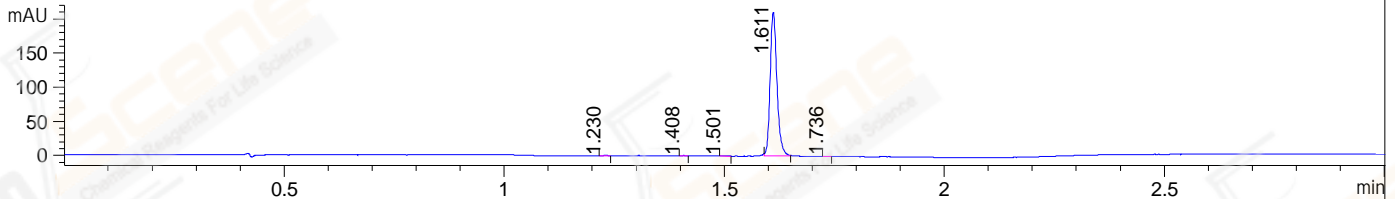


File ..1\DATA\2019\20190122\556\BIZ2019-122-WYQ1.D Tgt Mass (CHM):
 Injection Date : 22 Jan 19 5:36 pm +0800 Seq. Line : 10
 Sample Name : BIZ2019-122-WYQ1 Location : P2-E-07
 Acq. Operator : LQ_1052 Inj : 1
 Spec. Reported : MS Integration Inj Volume : 1 ul
 Acq. Method : D:\Chem32\1\data\2019\20190122\556\1-POS-3MIN-1.M
 Analysis Method : D:\CHEM32\1\DATA\2019\20190122\556\1-POS-3MIN-1.M
 Catalog No : CS-W009961 Batch#37066
 Method Info : Mobile Phase: A: water(0.01%TFA) B:ACN(0.01%TFA)
 Gradient: 5% to 95%B within 1.3 min
 Flow Rate :1.8ml/min
 Column :SunFire C18, 4.6*50mm,3.5um A-RP-314
 Oven Temperature : 45□

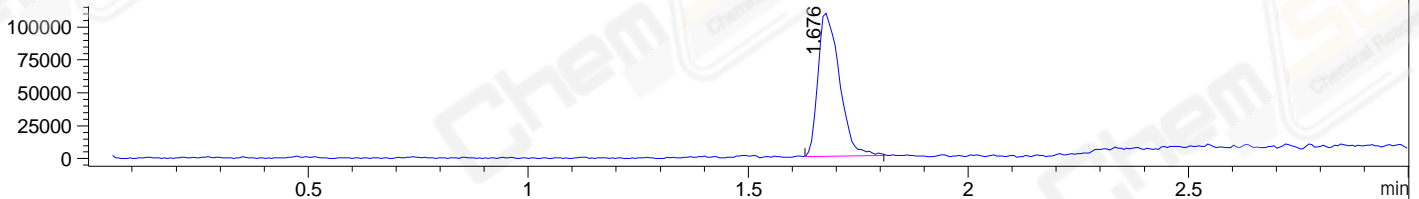
DAD1 B, Sig=214,4 Ref=off



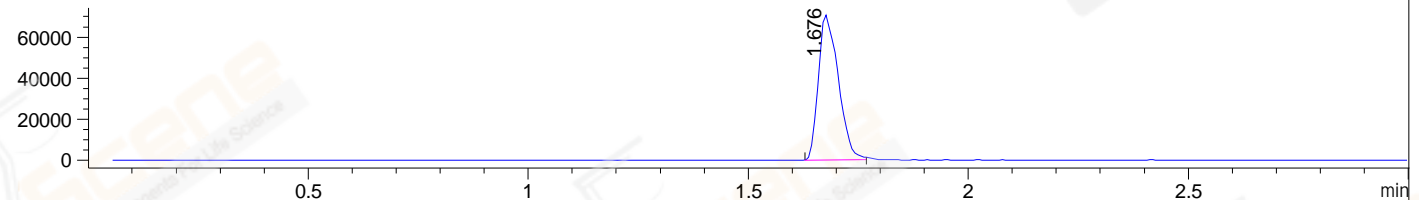
DAD1 C, Sig=254,4 Ref=off



MSD1 TIC, MS File ES-API, Pos, Scan, Frag: 70



Ion 300.1, MSD1 300.1, Target Mass 299.1 +H Positive, EIC=299.8:300.8



Integration Results for DAD1 B, Sig=214,4 Ref=off

RetTim	Width	Area	Height	Area%	MS (+)
1.50	0.01	0.68	0.95	0.06	274
1.61	0.02	1213.37	1110.38	99.87	300
1.95	0.01	0.92	1.45	0.08	ND

Integration Results for DAD1 C, Sig=254,4 Ref=off

RetTim	Width	Area	Height	Area%	MS (+)
1.23	0.01	0.25	0.38	0.11	ND
1.41	0.01	0.31	0.45	0.14	ND
1.50	0.01	0.27	0.33	0.12	274
1.61	0.02	227.53	211.05	99.55	300
1.74	0.01	0.19	0.22	0.08	300

Integration Results for MSD1 TIC, MS File

RetTim	Width	Area	Height	Area%	MS (+)
1.68	0.05	371364.03	109101.59	100.00	300

Ret. Time: 1.68

<<<< POSITIVE SPECTRA >>>>

ES-API Positive

