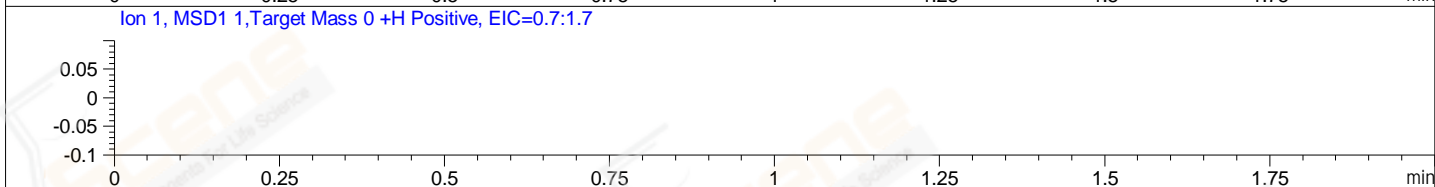
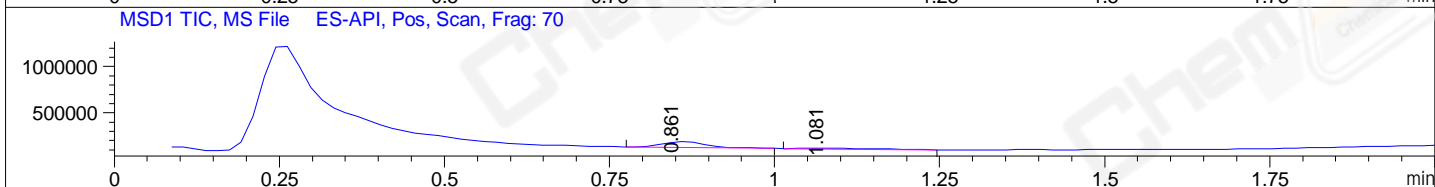
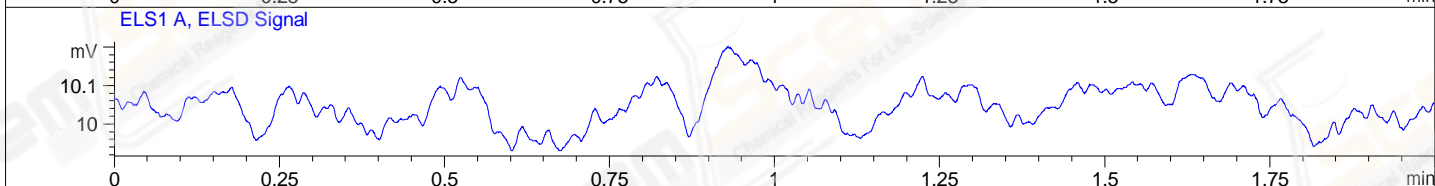
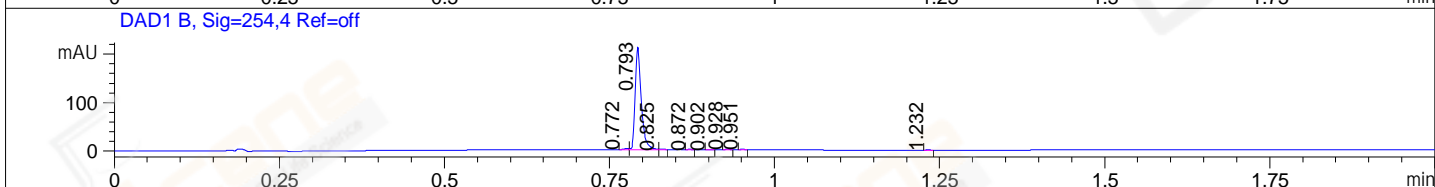
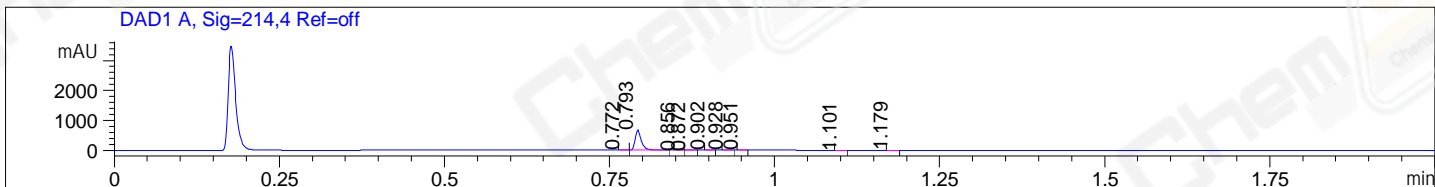


File ..0200217 2020-02-17 08-38-45\TJJ7385-004-1.D Tgt Mass (CHM):  
Injection Date : 17 Feb 20 11:11 am +0800 Seq. Line : 25  
Sample Name : TJJ7385-004-1 Location : P1-B-10  
Acq. Operator : SYSTEM Inj : 1  
Spec. Reported : MS Integration Inj Volume : 0.2 ul  
Acq. Method : D:\LCMS03\Data\20200217\20200217 2020-02-17 08-38-45\1-POS-UPLC2.0MIN(0.8ML) .1  
Analysis Method : D:\LCMS03\Data\20200217\20200217 2020-02-17 08-38-45\1-POS-UPLC2.0MIN(0.8ML) .1  
Catalog No : CS-6305  
Method Info : Mobile Phase: A: water(0.01%TFA) B:ACN(0.01%TFA)  
Gradient: 5% to 95%B within 0.6 min  
Flow Rate :0.8ml/min  
Column :Poroshell 120 EC- C18, 2.1\*50mm,1.9um A-RP-463  
Oven Temperature : 45C



Integration Results for DAD1 A, Sig=214,4 Ref=off

| RetTim | Width | Area   | Height | Area% | MS (+) |
|--------|-------|--------|--------|-------|--------|
| 0.77   | 0.01  | 2.76   | 4.64   | 0.62  | 114    |
| 0.79   | 0.01  | 433.28 | 673.25 | 98.02 | 114    |
| 0.86   | 0.01  | 0.38   | 0.81   | 0.09  | 114    |
| 0.87   | 0.01  | 0.55   | 0.86   | 0.12  | 114    |
| 0.90   | 0.01  | 1.00   | 1.94   | 0.23  | 114    |
| 0.93   | 0.01  | 0.72   | 1.25   | 0.16  | 114    |
| 0.95   | 0.01  | 1.46   | 2.90   | 0.33  | 114    |
| 1.10   | 0.01  | 0.45   | 0.69   | 0.10  | 114    |
| 1.18   | 0.01  | 1.44   | 2.63   | 0.33  | 114    |

Integration Results for DAD1 B, Sig=254,4 Ref=off

| RetTim | Width | Area   | Height | Area% | MS (+) |
|--------|-------|--------|--------|-------|--------|
| 0.77   | 0.01  | 1.32   | 2.30   | 0.94  | 114    |
| 0.79   | 0.01  | 137.02 | 213.14 | 98.02 | 114    |
| 0.83   | 0.01  | 0.19   | 0.60   | 0.14  | 114    |
| 0.87   | 0.01  | 0.17   | 0.36   | 0.12  | 114    |
| 0.90   | 0.01  | 0.22   | 0.48   | 0.16  | 114    |

|      |      |      |      |      |     |
|------|------|------|------|------|-----|
| 0.93 | 0.01 | 0.40 | 0.81 | 0.29 | 114 |
| 0.95 | 0.01 | 0.34 | 0.74 | 0.24 | 114 |
| 1.23 | 0.01 | 0.13 | 0.28 | 0.09 | 114 |

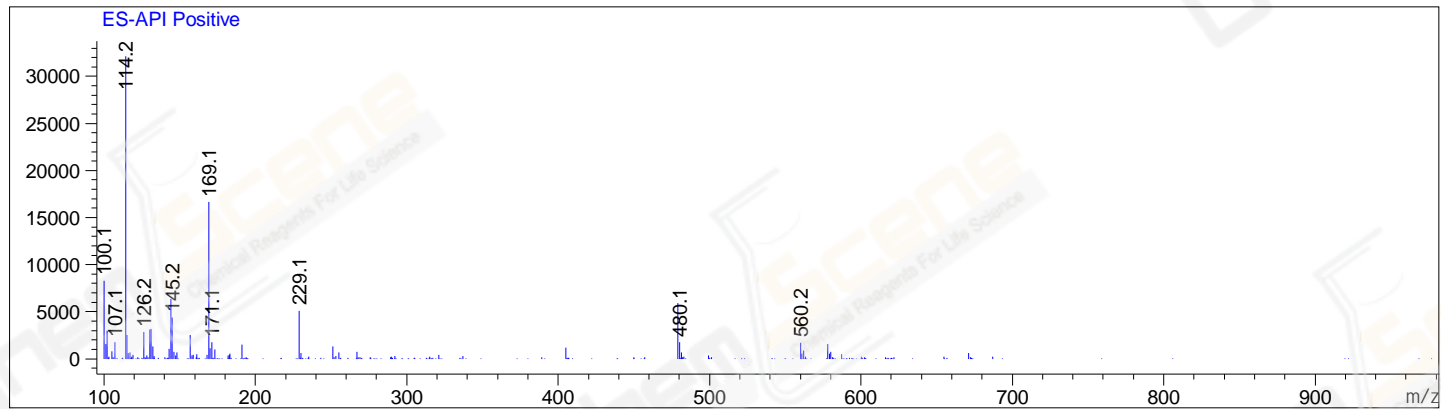
## Integration Results for ELS1 A, ELSD Signal

| RetTim | Width | Area | Height | Area% | MS (+) |
|--------|-------|------|--------|-------|--------|
|--------|-------|------|--------|-------|--------|

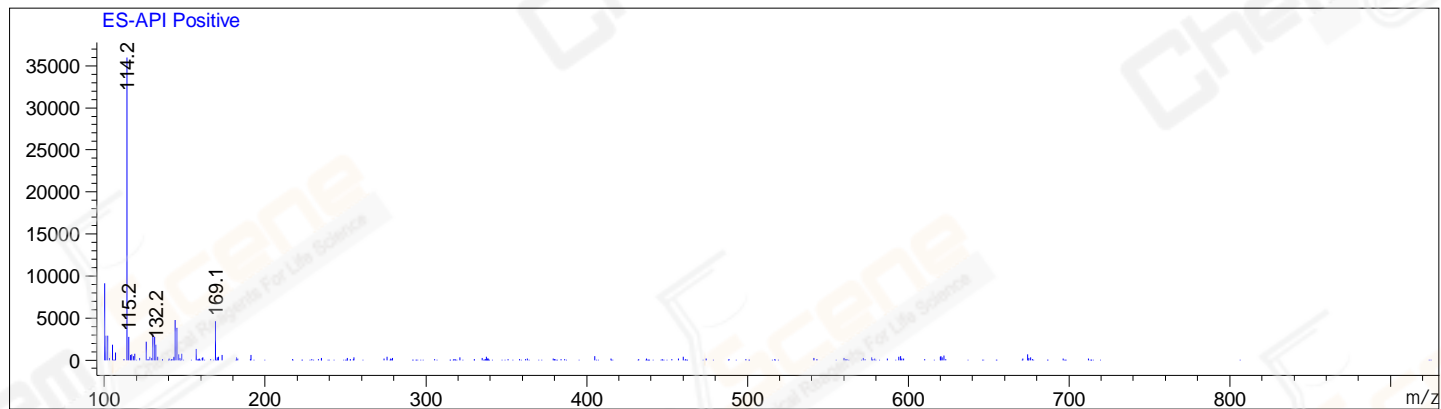
## Integration Results for MSD1 TIC, MS File

| RetTim | Width | Area      | Height   | Area% | MS (+) |
|--------|-------|-----------|----------|-------|--------|
| 0.86   | 0.07  | 301380.28 | 66908.18 | 81.25 | 114    |
| 1.08   | 0.10  | 69560.74  | 10755.79 | 18.75 | 114    |

Ret. Time: 0.86 <<<< POSITIVE SPECTRA >>>>



Ret. Time: 1.08



\*\*\* End of Report \*\*\*