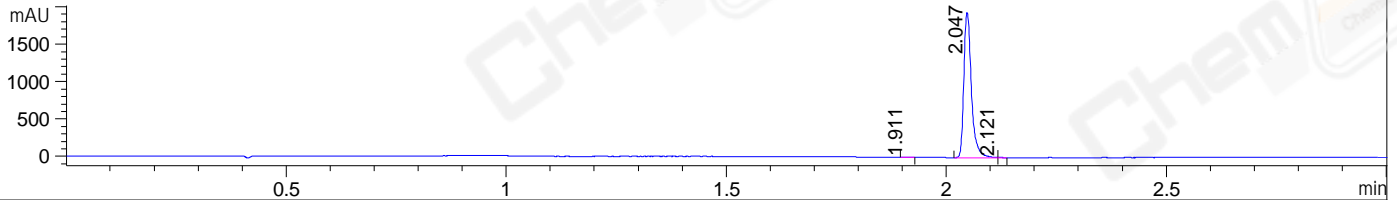
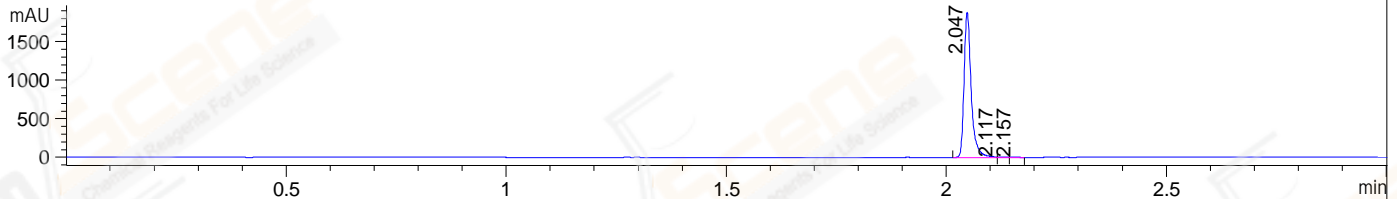


File ..DATA\2020\20201207\1191\CPK2020-D07-59320.D Tgt Mass (CHM):
Injection Date : 7 Dec 20 11:00 am +0800 Seq. Line : 23
Sample Name : CPK2020-D07-59320 Location : P1-B-08
Acq. Operator : zyj_1547 Inj : 1
Spec. Reported : MS Integration Inj Volume : 1 ul
Acq. Method : D:\Chem32\1\data\2020\20201207\1191\1-POS-3MIN.M
Analysis Method : D:\CHEM32\1\DATA\2020\20201207\1191\1-POS-3MIN.M
CAS NO. : 2097938-73-1
Method Info : Mobile Phase: A: water(0.01%TFA) B:ACN(0.01%TFA)
Gradient: 5% to 95%B within 1.3 min
Flow Rate :1.8ml/min
Column :SunFire C18, 4.6*50mm,3.5um A-RP-698

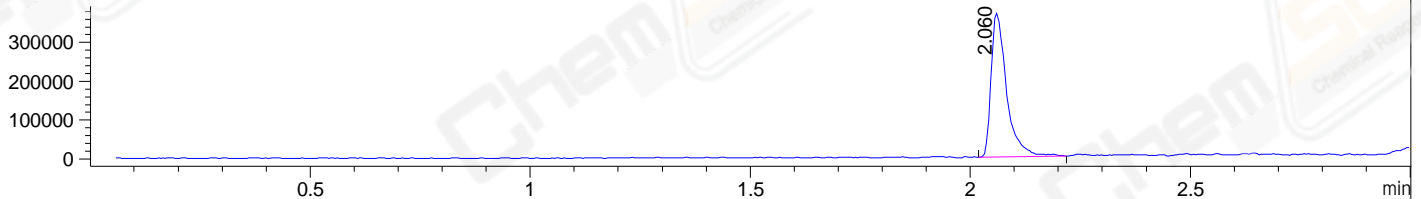
DAD1 B, Sig=214,4 Ref=off



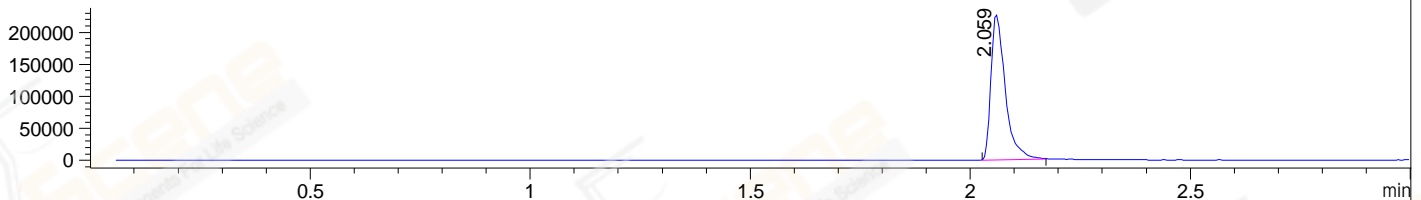
DAD1 C, Sig=254,4 Ref=off



MSD1 TIC, MS File ES-API, Pos, Scan, Frag: 70



Ion 339, MSD1 339, Target Mass 338 +H Positive, EIC=338.7:339.7



Integration Results for DAD1 B, Sig=214,4 Ref=off

| RetTim | Width | Area | Height | Area% | MS (+) |
|--------|-------|---------|---------|-------|--------|
| 1.91 | 0.02 | 4.47 | 4.52 | 0.19 | ND |
| 2.05 | 0.02 | 2323.67 | 1944.02 | 99.67 | 339 |
| 2.12 | 0.01 | 3.20 | 4.04 | 0.14 | 339 |

Integration Results for DAD1 C, Sig=254,4 Ref=off

| RetTim | Width | Area | Height | Area% | MS (+) |
|--------|-------|---------|---------|-------|--------|
| 2.05 | 0.02 | 2127.12 | 1887.41 | 99.49 | 339 |
| 2.12 | 0.01 | 6.95 | 6.55 | 0.33 | 339 |
| 2.16 | 0.02 | 3.93 | 3.51 | 0.18 | 339 |

Integration Results for MSD1 TIC, MS File

| RetTim | Width | Area | Height | Area% | MS (+) |
|--------|-------|-----------|-----------|--------|--------|
| 2.06 | 0.04 | 910356.50 | 371201.50 | 100.00 | 339 |

Ret. Time: 2.06

<<<< POSITIVE SPECTRA >>>>

ES-API Positive

