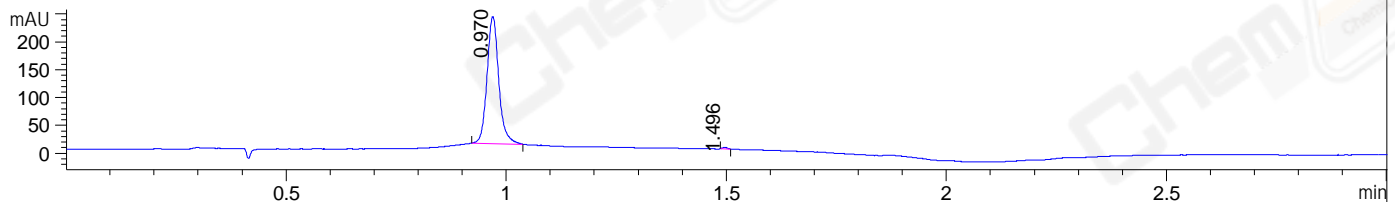
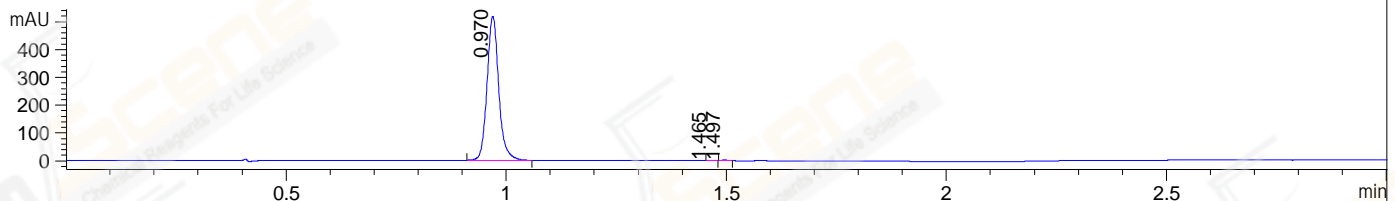


File ..\DATA\2020\20201020\1130\BIZ2020-O17-WLQ6.D Tgt Mass (CHM):
 Injection Date : 20 Oct 20 3:26 pm +0800 Seq. Line : 73
 Sample Name : BIZ2020-O17-WLQ6 Location : P1-C-04
 Acq. Operator : zyj_1547 Inj : 1
 Spec. Reported : MS Integration Inj Volume : 1 ul
 Acq. Method : D:\Chem32\1\data\2020\20201020\1130\1-POS-3MIN.M
 Analysis Method : D:\CHEM32\1\DATA\2020\20201020\1130\1-POS-3MIN.M
 CAS NO. : 67-47-0
 Method Info : Mobile Phase: A: water(0.01%TFA) B:ACN(0.01%TFA)
 Gradient: 5% to 95%B within 1.3 min
 Flow Rate :1.8ml/min
 Column :SunFire C18, 4.6*50mm,3.5um A-RP-624

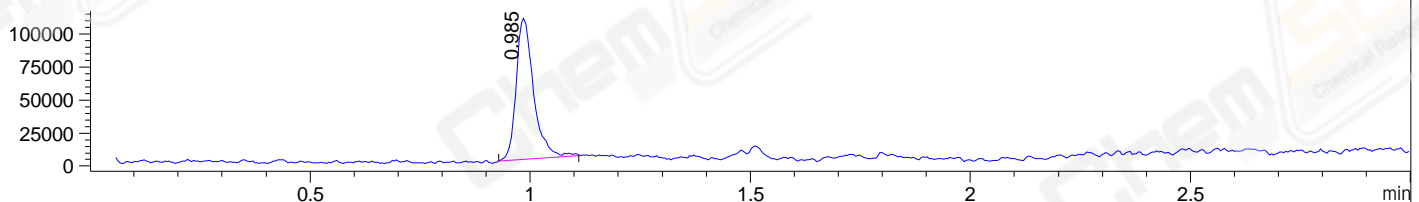
DAD1 B, Sig=214,4 Ref=off



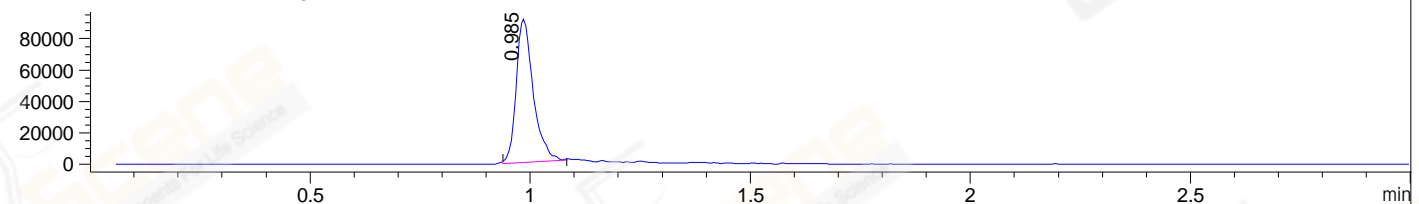
DAD1 C, Sig=254,4 Ref=off



MSD1 TIC, MS File ES-API, Pos, Scan, Frag: 70



Ion 127, MSD1 127, Target Mass 126 +H Positive, EIC=126.7:127.7



Integration Results for DAD1 B, Sig=214,4 Ref=off

RetTim	Width	Area	Height	Area%	MS (+)
0.97	0.03	423.75	228.39	99.49	127
1.50	0.01	2.17	2.99	0.51	378

Integration Results for DAD1 C, Sig=254,4 Ref=off

RetTim	Width	Area	Height	Area%	MS (+)
0.97	0.03	955.18	517.98	99.63	127
1.46	0.01	1.27	1.53	0.13	252
1.50	0.01	2.27	2.73	0.24	378

Integration Results for MSD1 TIC, MS File

RetTim	Width	Area	Height	Area%	MS (+)
0.98	0.04	297116.97	107242.38	100.00	127

Ret. Time: 0.98

<<<< POSITIVE SPECTRA >>>>

ES-API Positive

