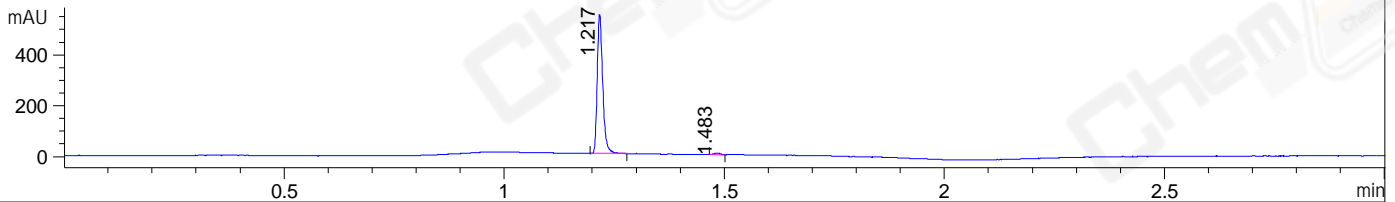
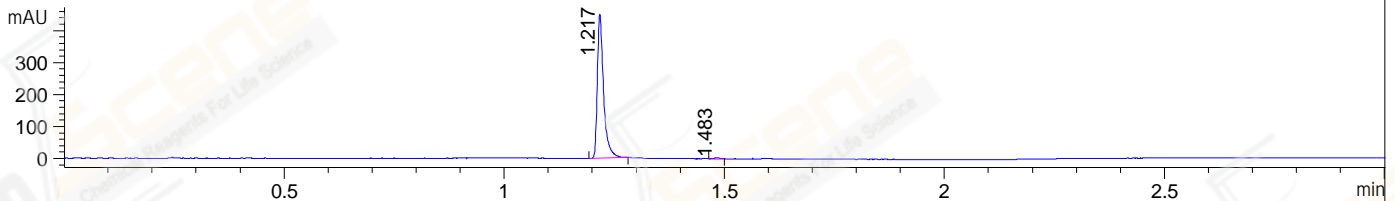


File ..ATA\2020\20200721\1048\CPK2020-721-27665-.D Tgt Mass (CHM):
 Injection Date : 21 Jul 20 5:09 pm +0800 Seq. Line : 49
 Sample Name : CPK2020-721-27665 Location : P1-E-05
 Acq. Operator : ZJ_1432 Inj : 1
 Spec. Reported : MS Integration Inj Volume : 0.25 ul
 Acq. Method : D:\Chem32\1\data\2020\20200721\1048\1-POS-3MIN.M
 Analysis Method : D:\CHEM32\1\DATA\2020\20200721\1048\1-POS-3MIN.M
 CAS NO. : 331-39-5
 Method Info : Mobile Phase: A: water(0.01%TFA) B:ACN(0.01%TFA)
 Gradient: 5% to 95%B within 1.3 min
 Flow Rate :1.8ml/min
 Column :SunFire C18, 4.6*50mm,3.5um A-RP-607
 Oven Temperature : 45□

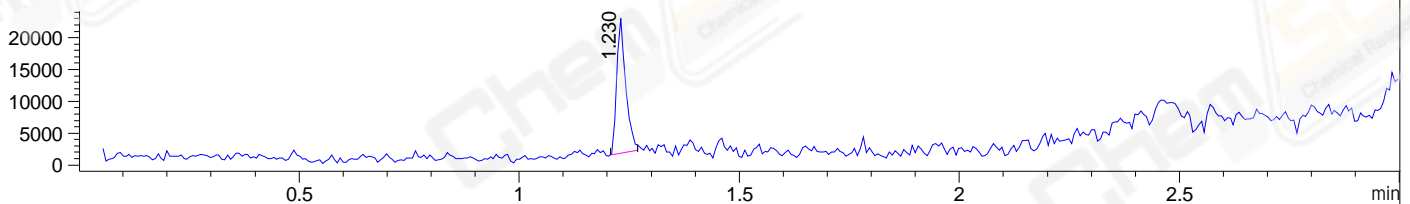
DAD1 B, Sig=214,4 Ref=off



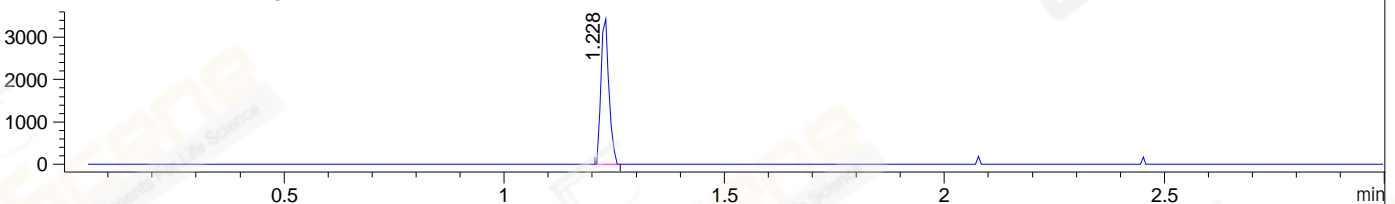
DAD1 C, Sig=254,4 Ref=off



MSD1 TIC, MS File ES-API, Pos, Scan, Frag: 70



Ion 181, MSD1 181, Target Mass 180 +H Positive, EIC=180.7:181.7



Integration Results for DAD1 B, Sig=214,4 Ref=off

RetTim	Width	Area	Height	Area%	MS(+)
1.22	0.01	476.88	548.27	98.71	201
1.48	0.02	6.25	6.48	1.29	ND

Integration Results for DAD1 C, Sig=254,4 Ref=off

RetTim	Width	Area	Height	Area%	MS(+)
1.22	0.02	444.84	451.10	99.27	201
1.48	0.02	3.29	3.28	0.73	ND

Integration Results for MSD1 TIC, MS File

RetTim	Width	Area	Height	Area%	MS(+)
1.23	0.02	30467.89	21224.68	100.00	201

Ret. Time: 1.23

<<<< POSITIVE SPECTRA >>>>

