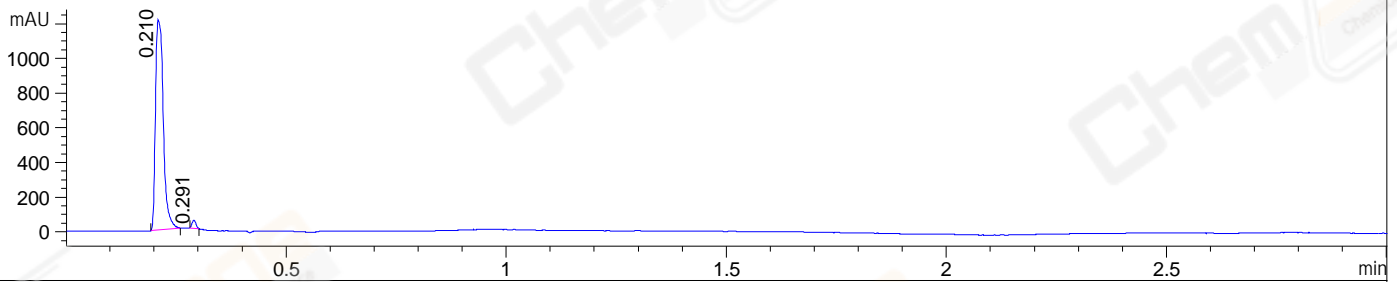
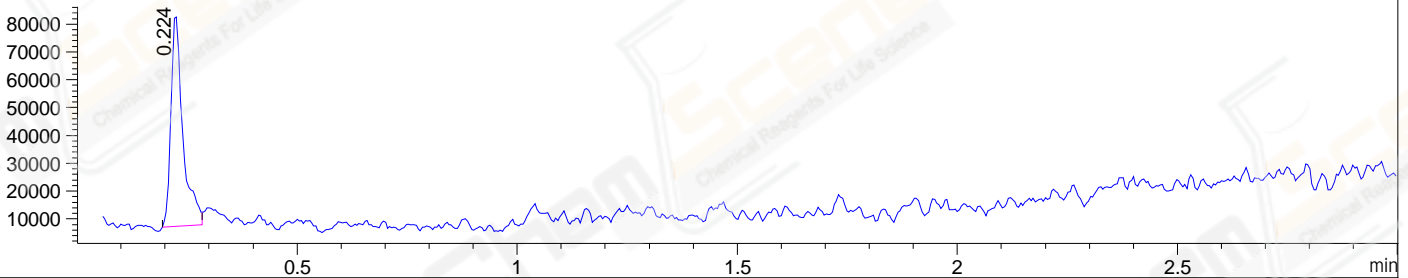


File ..\DATA\2021\20210506\1375\BIZ2021-506-WMX1.D Tgt Mass (CHM):
 Injection Date : 6 May 21 3:02 pm +0800 Seq. Line : 66
 Sample Name : BIZ2021-506-WMX1 Location : P1-D-03
 Acq. Operator : yrz_1364 Inj : 1
 Spec. Reported : MS Integration Inj Volume : 1 ul
 Acq. Method : D:\Chem32\1\data\2021\20210506\1375\1-POS-3MIN.M
 Analysis Method : D:\CHEM32\1\DATA\2021\20210506\1375\1-POS-3MIN.M
 CAS NO. : 4506-66-5
 Method Info : Mobile Phase: A: water(0.01%TFA) B:ACN(0.01%TFA)
 Gradient: 5% to 95%B within 1.3 min
 Flow Rate :1.8ml/min
 Column :SunFire C18, 4.6*50mm,3.5um A-RP-698

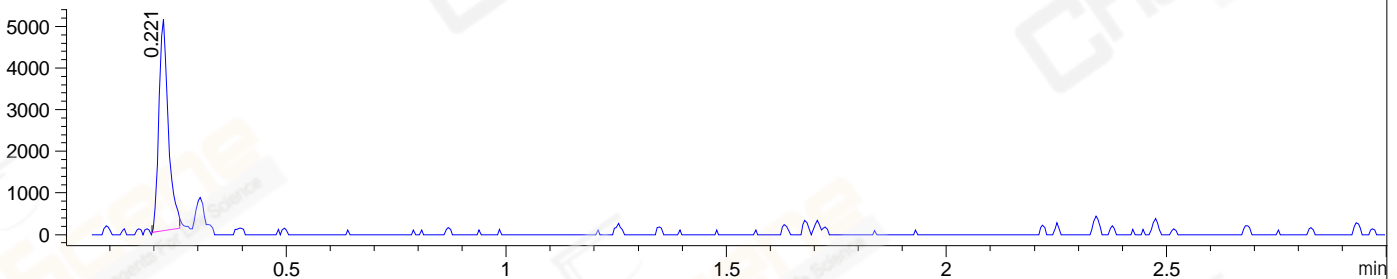
DAD1 B, Sig=214,4 Ref=off



MSD1 TIC, MS File ES-API, Pos, Scan, Frag: 70



Ion 139, MSD1 139, Target Mass 138 +H Positive, EIC=138.7:139.7



Integration Results for DAD1 B, Sig=214,4 Ref=off

| RetTim | Width | Area | Height | Area% | MS(+) |
|--------|-------|---------|---------|-------|-------|
| 0.21 | 0.02 | 1495.66 | 1211.60 | 98.22 | 137 |
| 0.29 | 0.01 | 27.06 | 44.63 | 1.78 | 137 |

Integration Results for MSD1 TIC, MS File

| RetTim | Width | Area | Height | Area% | MS(+) |
|--------|-------|-----------|----------|--------|-------|
| 0.22 | 0.03 | 143722.84 | 76646.13 | 100.00 | 137 |

Ret. Time: 0.22

<<<< POSITIVE SPECTRA >>>>

ES-API Positive

