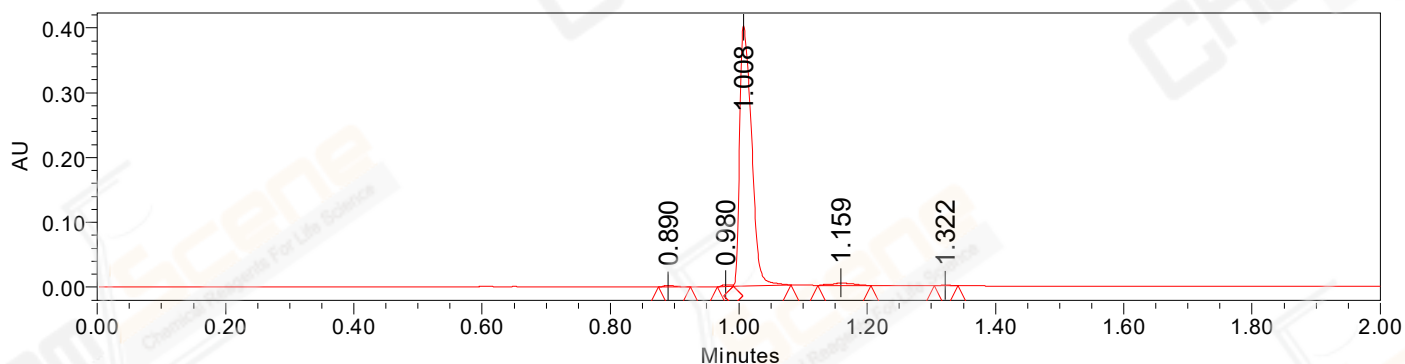


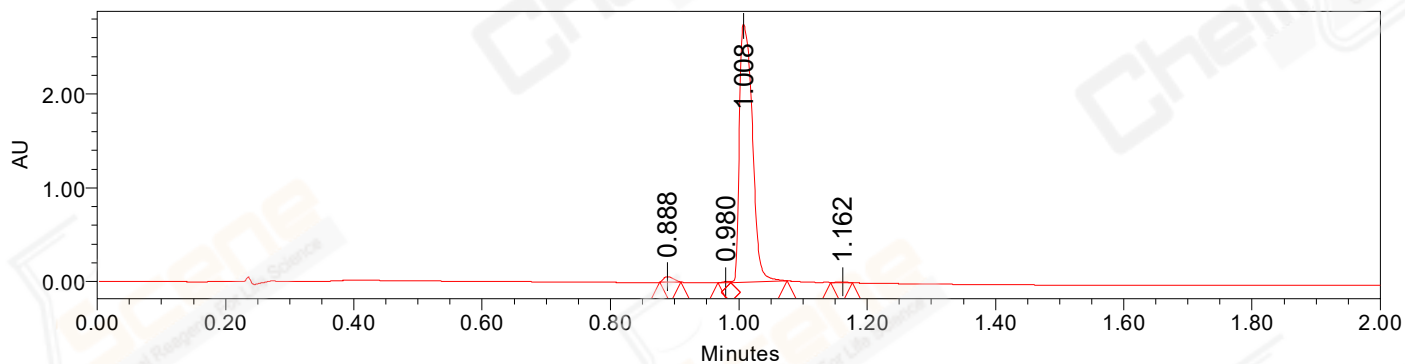
SAMPLE INFORMATION

CAS NO.:	2173193-92-3	Acquired By:	LY
Sample information:	2021090196925	Date Acquired:	9/1/2021 4:52:14 PM CST
Vial:	1:F,3	Acq. Method Set:	1_POS_2MIN
Injection #:	1	Date Processed:	9/2/2021 10:17:07 AM CST,
Injection Volume:	0.20 ul	Processing Method:	PDA_01, MS_scan
Run Time:	2.8 Minutes	Channel Name:	PDA Ch1 214nm@4.8nm, MS TIC,
Sample Set Name:	20210901	Column Name:	Poroshell 120 EC-C18 A-RP-657

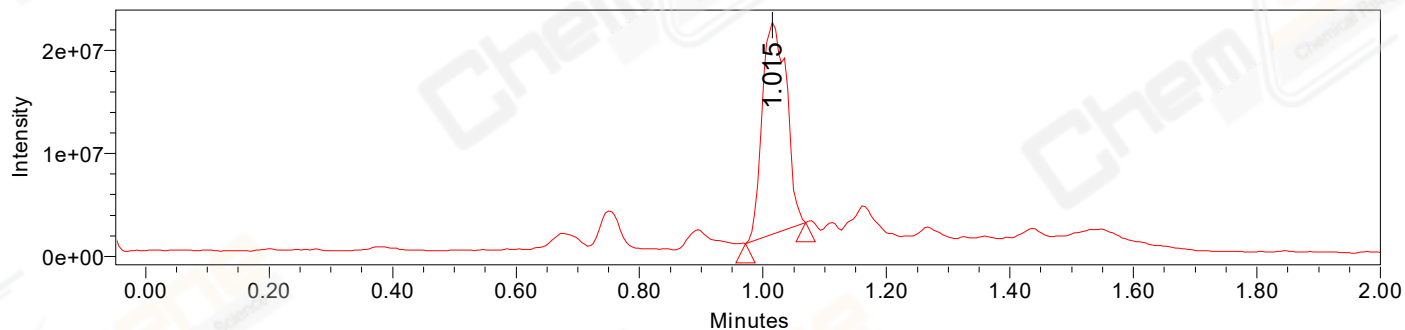
Auto-Scaled Chromatogram



Auto-Scaled Chromatogram



Auto-Scaled Chromatogram



Peak Results
Channel Name: PDA Ch2 254nm@4.8nm

	RT	Width (sec)	Area	Height	% Area	Base Peak (Combined) (m/z)	Channel Name
1	0.890	3.000	2884	2088	0.55	152.12	PDA Ch2 254nm@4.8nm
2	0.980	1.500	2868	2858	0.54	173.34	PDA Ch2 254nm@4.8nm
3	1.008	5.350	512690	401523	96.89	173.29	PDA Ch2 254nm@4.8nm
4	1.159	4.950	9725	3878	1.84	267.18	PDA Ch2 254nm@4.8nm
5	1.322	2.200	956	871	0.18	294.22	PDA Ch2 254nm@4.8nm

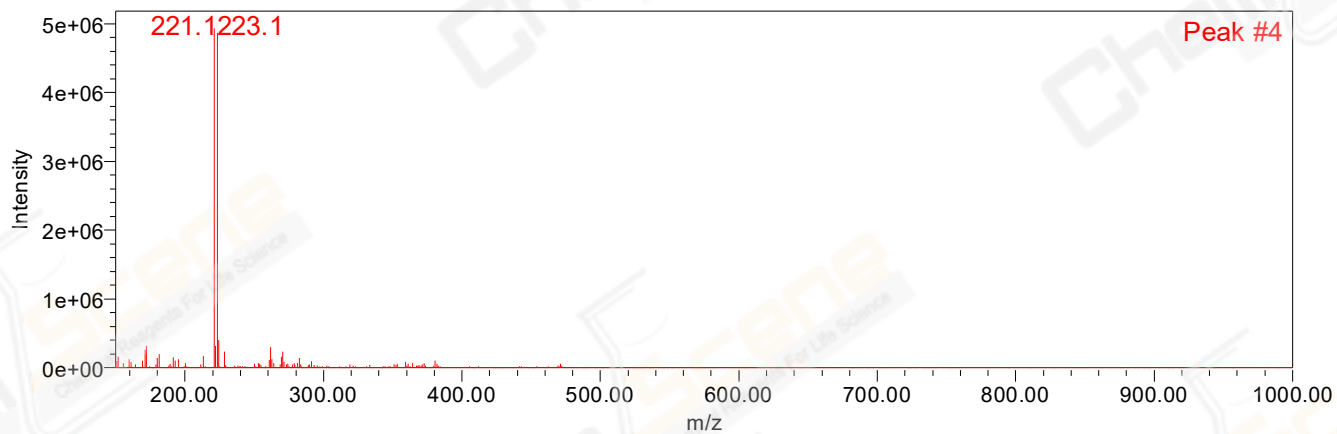
Peak Results
Channel Name: PDA Ch1 214nm@4.8nm

	RT	Width (sec)	Area	Height	% Area	Base Peak (Combined) (m/z)	Channel Name
1	0.888	2.000	63224	58689	1.62	353.43	PDA Ch1 214nm@4.8nm
2	0.980	1.200	8426	10402	0.22	173.35	PDA Ch1 214nm@4.8nm
3	1.008	5.300	3829744	2750657	98.03	173.29	PDA Ch1 214nm@4.8nm
4	1.162	2.050	5496	5102	0.14	221.12	PDA Ch1 214nm@4.8nm

Peak Results
Channel Name: MS TIC

	RT	Width (sec)	Area	Height	% Area	Base Peak (Combined) (m/z)	Channel Name
1	1.015	5.803	55957819	20517007	100.00	221.14	MS TIC

Match Plot



Retention Time 1.015 Channel Name MS TIC