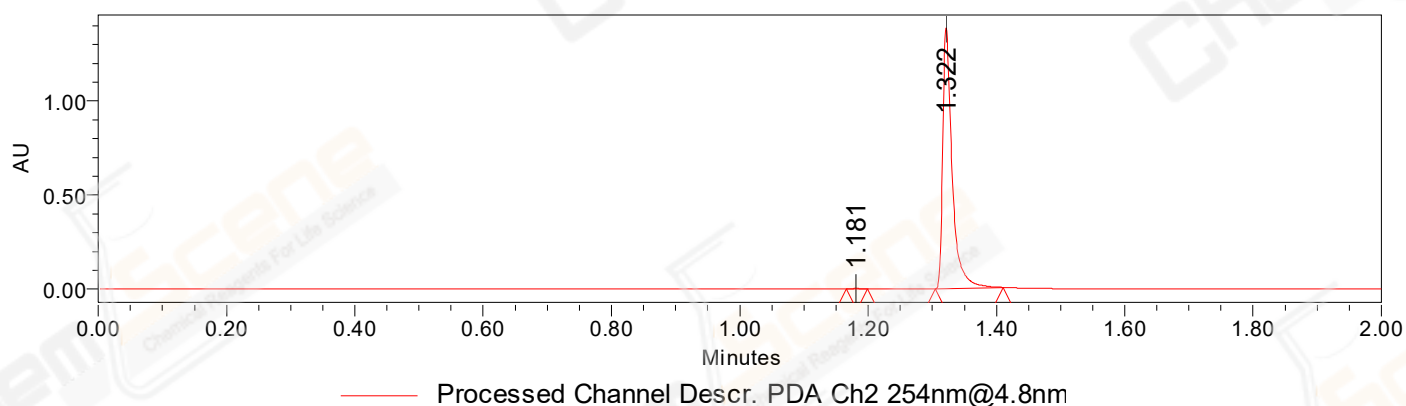


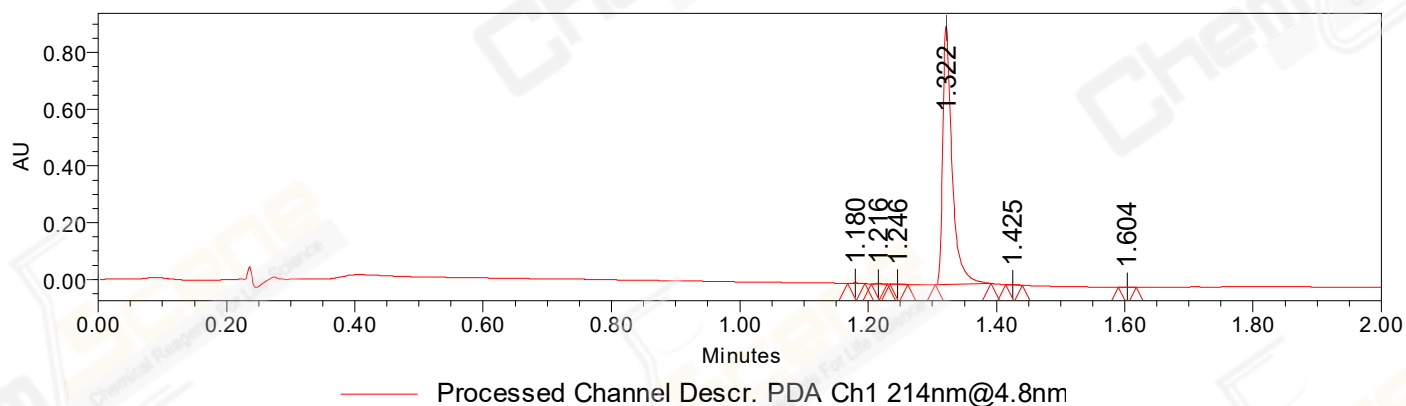
## SAMPLE INFORMATION

CAS NO.:	1799610-89-1	Acquired By:	LY
Sample information:	2021090397339	Date Acquired:	9/6/2021 9:40:19 AM CST
Vial:	1:A,4	Acq. Method Set:	1_POS_2MIN
Injection #:	1	Date Processed:	9/6/2021 1:01:06 PM CST,
Injection Volume:	0.20 ul	Processing Method:	PDA_01, MS_scan
Run Time:	2.8 Minutes	Channel Name:	PDA Ch1 214nm@4.8nm, MS TIC,
Sample Set Name:	20210906	Column Name:	Poroshell 120 EC-C18 A-RP-657

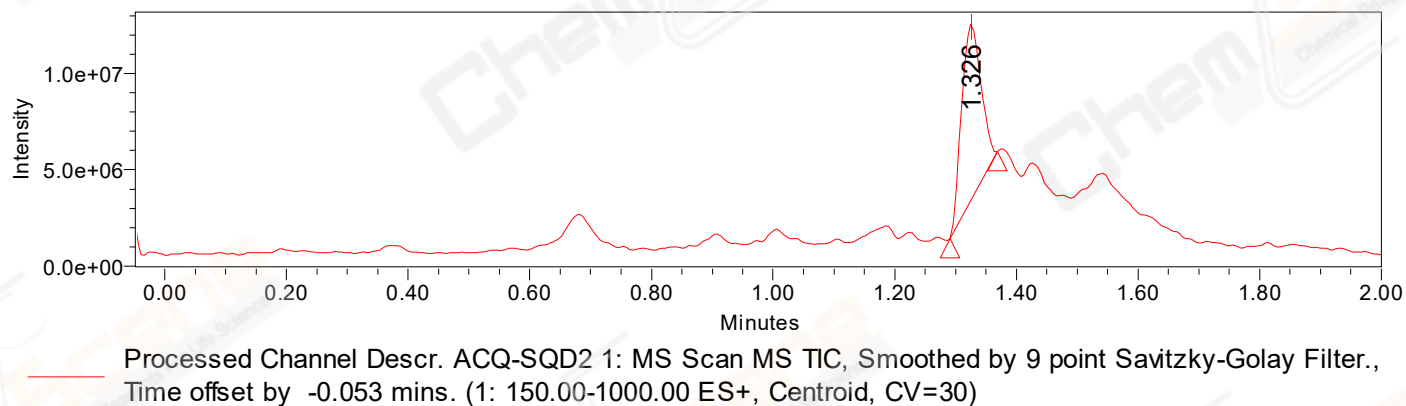
### Auto-Scaled Chromatogram



### Auto-Scaled Chromatogram



### Auto-Scaled Chromatogram



Peak Results  
Channel Name: PDA Ch2 254nm@4.8nm

	RT	Width (sec)	Area	Height	% Area	Base Peak (Combined) (m/z)	Channel Name
1	1.181	2.000	3035	3351	0.21	196.19	PDA Ch2 254nm@4.8nm
2	1.322	6.300	1416204	1384765	99.79	197.28	PDA Ch2 254nm@4.8nm

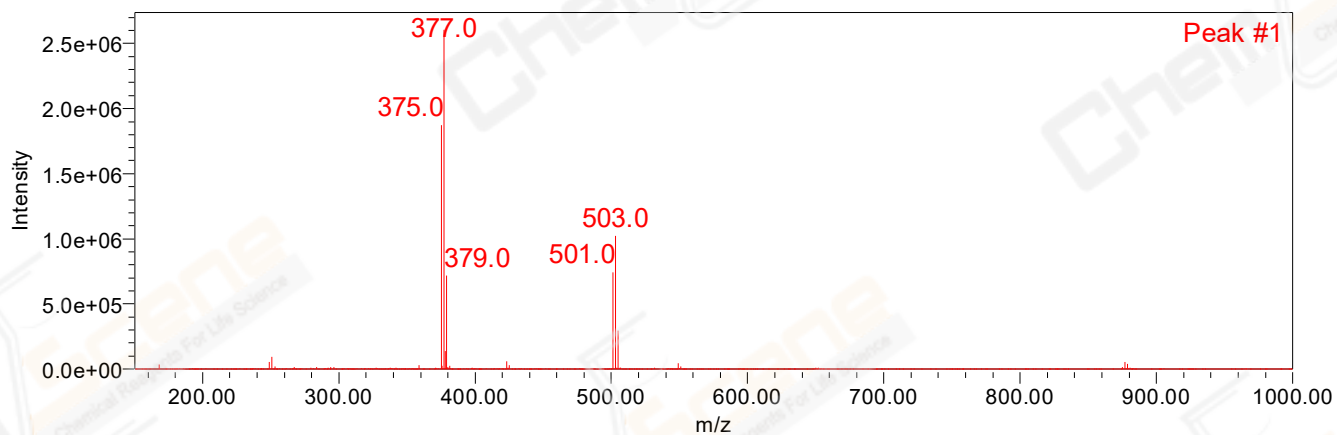
Peak Results  
Channel Name: PDA Ch1 214nm@4.8nm

	RT	Width (sec)	Area	Height	% Area	Base Peak (Combined) (m/z)	Channel Name
1	1.180	1.600	1056	1361	0.11	162.44	PDA Ch1 214nm@4.8nm
2	1.216	1.500	1098	1460	0.12	415.53	PDA Ch1 214nm@4.8nm
3	1.246	1.650	1371	1665	0.15	183.25	PDA Ch1 214nm@4.8nm
4	1.322	5.200	924008	910975	99.37	197.28	PDA Ch1 214nm@4.8nm
5	1.425	1.550	1384	1754	0.15	277.43	PDA Ch1 214nm@4.8nm
6	1.604	1.700	980	1376	0.11	280.49	PDA Ch1 214nm@4.8nm

Peak Results  
Channel Name: MS TIC

	RT	Width (sec)	Area	Height	% Area	Base Peak (Combined) (m/z)	Channel Name
1	1.326	4.642	20368513	9069278	100.00	377.03	MS TIC

Match Plot



Retention Time 1.326 Channel Name MS TIC