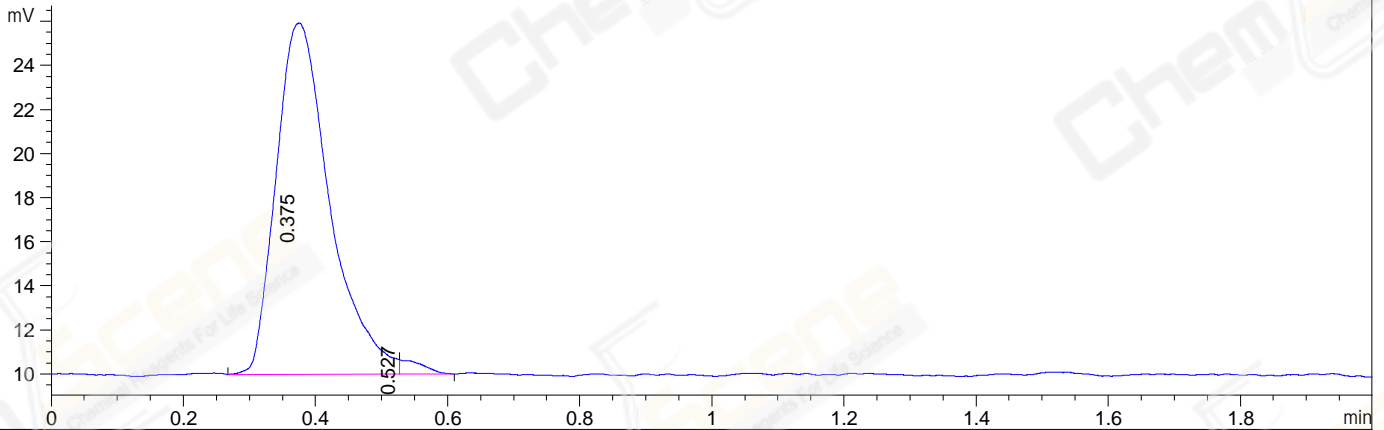
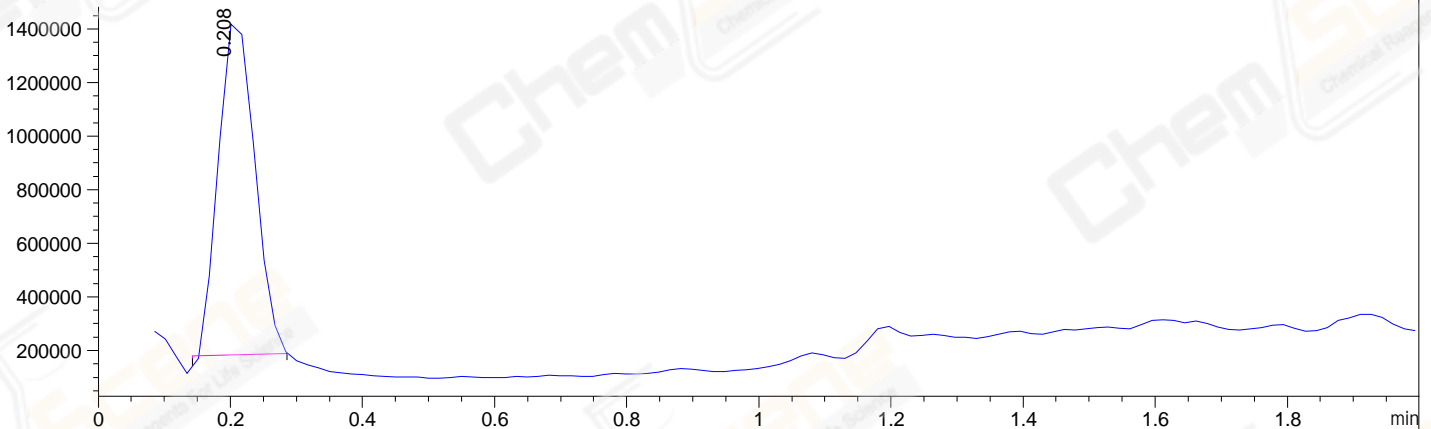


File ..ta\LY\2021-06-21\BIZ2021-617-WMX13-016370.D Tgt Mass (EZ):
 Injection Date : 21 Jun 21 5:00 pm +0800 Seq. Line : 0
 Sample Name : BIZ2021-617-WMX13 Location : P2-C-11
 Acq. Operator : LXH_1473 Inj : 1
 Spec. Reported : MS Integration Inj Volume : 6 ul
 Acq. Method : D:\LCMS\Methods\1-POS-UPLC2.0MIN(0.8ML)-(150-1000).M
 Analysis Method : D:\LCMS\METHODS\1-POS-UPLC2.0MIN(0.8ML)-(150-1000).M
 CAS NO. : 73465-43-7 Walkup method: '1-POS-2MIN' Target:
 Method Info : Mobile Phase: A: water(0.01%TFA) B:ACN(0.01%TFA)
 Gradient: 5% to 95%B within 0.6 min
 Flow Rate : 0.8ml/min
 Column : Poroshell 120 EC- C18, 2.1*50mm,1.9um A-RP-749
 Oven Temperature : 45C

ELS1 A, ELSD Signal



MSD1 TIC, MS File ES-API, Pos, Scan, Frag: 70



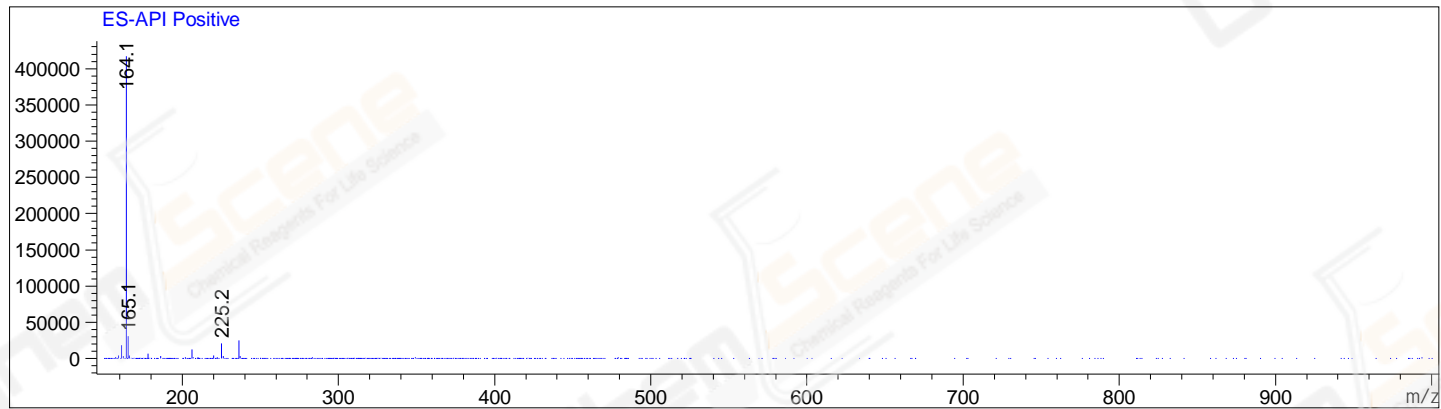
Integration Results for ELS1 A, ELSD Signal

| RetTim | Width | Area | Height | Area% | MS(+) |
|--------|-------|-------|--------|-------|-------|
| 0.38 | 0.09 | 90.02 | 15.94 | 98.28 | 225 |
| 0.53 | 0.04 | 1.58 | 0.65 | 1.72 | 225 |

Integration Results for MSD1 TIC, MS File

| RetTim | Width | Area | Height | Area% | MS(+) |
|--------|-------|------------|------------|--------|-------|
| 0.21 | 0.06 | 4775093.00 | 1293081.00 | 100.00 | 164 |

Ret. Time: 0.21 <<<< POSITIVE SPECTRA >>>>



*** End of Report ***