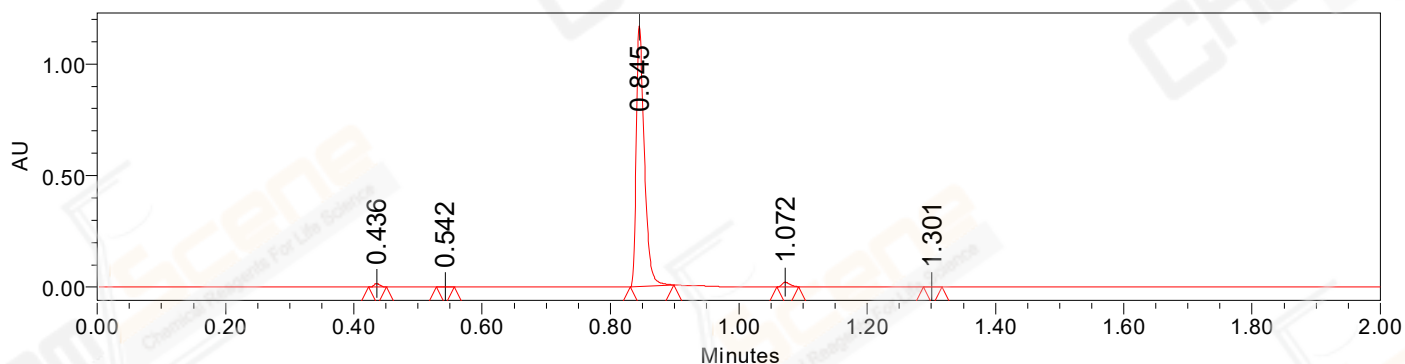


## SAMPLE INFORMATION

Sample Name: LJC202109270056  
CAS NO.: 5458-56-0  
Vial: 1:A,7  
Injection #: 1  
Injection Volume: 0.20 ul  
Run Time: 2.8 Minutes  
Sample Set Name: 20210927

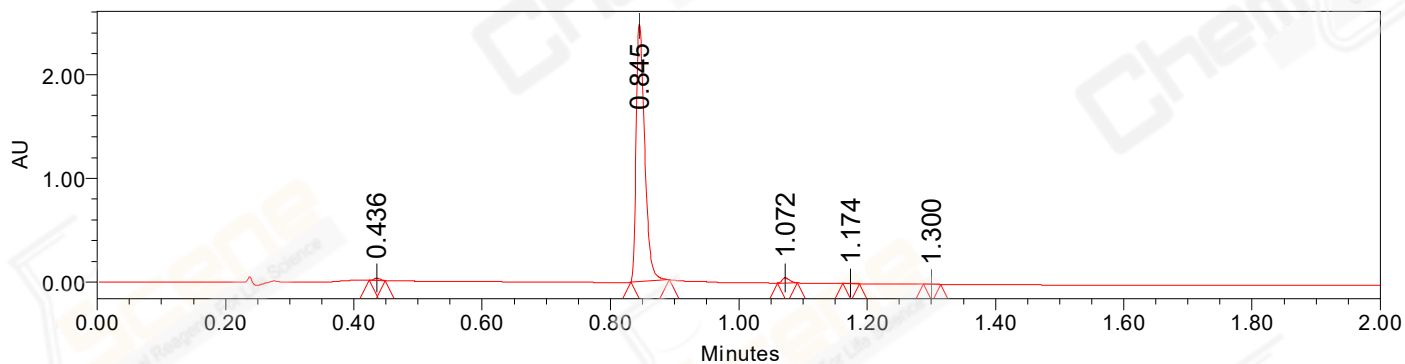
Acquired By: LY  
Date Acquired: 9/27/2021 12:59:38 PM CST  
Acq. Method Set: 1\_POS\_2MIN  
Date Processed: 9/27/2021 1:24:11 PM CST,  
Processing Method: PDA\_01, MS\_scan  
Channel Name: PDA Ch1 214nm@4.8nm, MS TIC,  
Column Name: Poroshell 120 EC-C18 A-RP-657

### Auto-Scaled Chromatogram



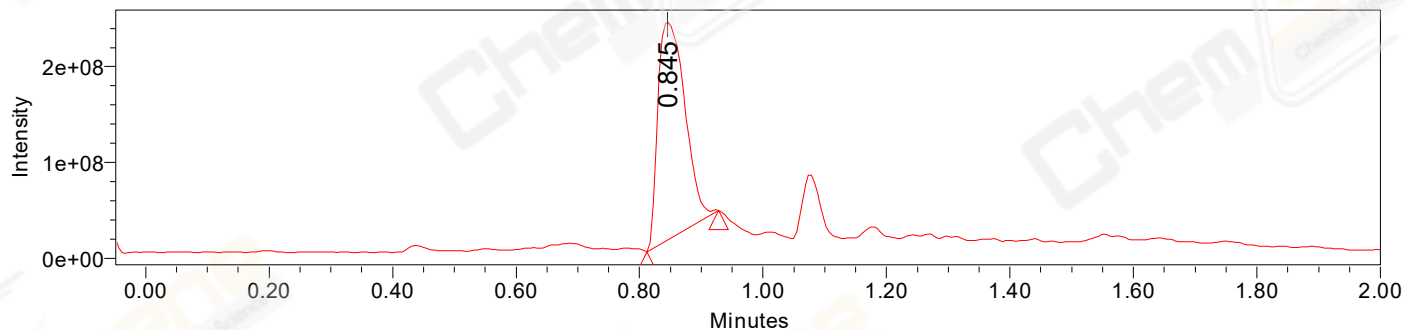
— Processed Channel Descr. PDA Ch2 254nm@4.8nm

### Auto-Scaled Chromatogram



— Processed Channel Descr. PDA Ch1 214nm@4.8nm

### Auto-Scaled Chromatogram



— Processed Channel Descr. ACQ-SQD2 1: MS Scan MS TIC, Smoothed by 9 point Savitzky-Golay Filter., Time offset by -0.053 mins. (1: 150.00-1000.00 ES+, Centroid, CV=30)

Peak Results  
Channel Name: PDA Ch2 254nm@4.8nm

	RT	Width (sec)	Area	Height	% Area	Base Peak (Combined) (m/z)	Channel Name
1	0.436	1.650	10904	16526	1.03	172.83	PDA Ch2 254nm@4.8nm
2	0.542	1.700	1355	1924	0.13	152.12	PDA Ch2 254nm@4.8nm
3	0.845	4.100	1022433	1166850	97.04	152.05	PDA Ch2 254nm@4.8nm
4	1.072	2.050	17693	21175	1.68	228.18	PDA Ch2 254nm@4.8nm
5	1.301	1.750	1184	1527	0.11	285.09	PDA Ch2 254nm@4.8nm

Peak Results  
Channel Name: PDA Ch1 214nm@4.8nm

	RT	Width (sec)	Area	Height	% Area	Base Peak (Combined) (m/z)	Channel Name
1	0.436	1.500	14329	22289	0.61	172.86	PDA Ch1 214nm@4.8nm
2	0.845	3.600	2295155	2477449	97.41	152.05	PDA Ch1 214nm@4.8nm
3	1.072	1.850	40772	50378	1.73	228.18	PDA Ch1 214nm@4.8nm
4	1.174	1.550	3141	4378	0.13	153.11	PDA Ch1 214nm@4.8nm
5	1.300	1.600	2809	3834	0.12	152.98	PDA Ch1 214nm@4.8nm

Peak Results  
Channel Name: MS TIC

	RT	Width (sec)	Area	Height	% Area	Base Peak (Combined) (m/z)	Channel Name
1	0.845	6.964	692186251	231558849	100.00	246.95	MS TIC

Match Plot

