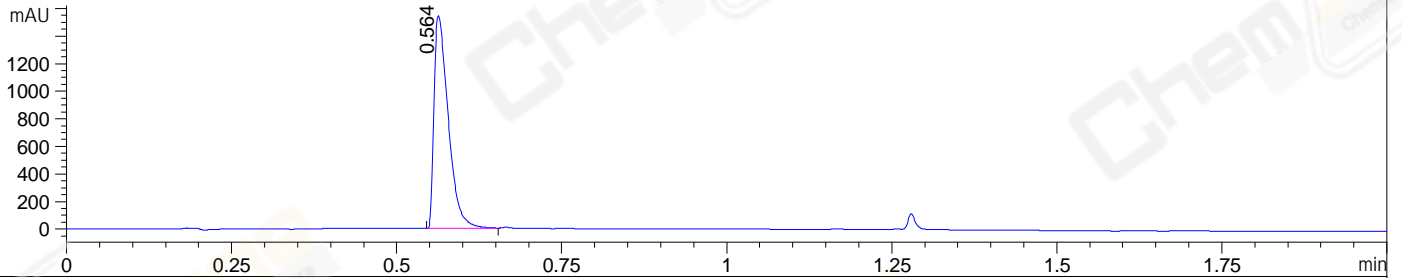
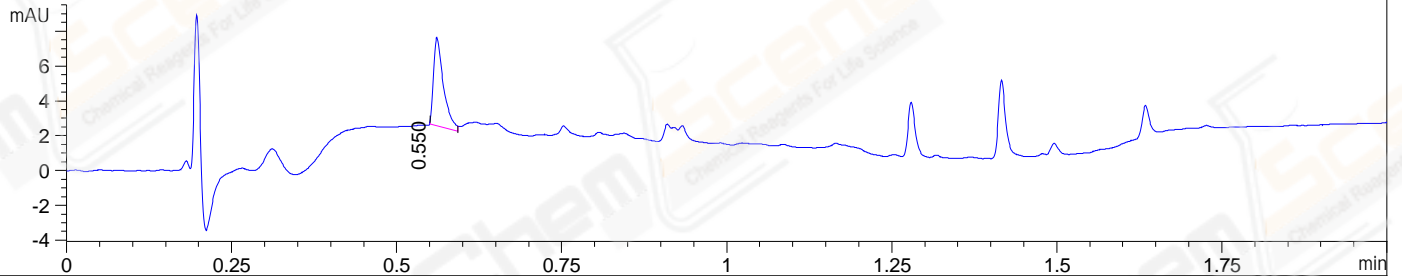


File ..05-06\YJL12713-007-10-5-UPLC-MS-04-014499.D Tgt Mass (EZ):  
 Injection Date : 06-May-22, 14:58:55 Seq. Line : 0  
 Sample Name : YJL12713-007-10-5 Location : P1-E-01  
 Acq. Operator : LY\_2278 Inj : 1  
 Spec. Reported : MS Integration Inj Volume : 0.5 ul  
 Acq. Method : E:\Chem32\1-Methods\1-POS-UPLC2.0MIN(0.8)-(0-2000).M  
 Analysis Method : E:\CHEM32\1\METHODS\1-POS-UPLC2.0MIN(0.8)-(0-2000).M  
 CAS NO. : 5239-82-7 WalkUp method: '1-POS-2MIN(0-2000)' Target:  
 Method Info : Mobile Phase: A: water(0.01%TFA) B:ACN(0.01%TFA)  
 Gradient: 5% to 95%B within 1.3 min  
 Flow Rate : 0.8ml/min  
 Column :Poroshell 120 EC- C18, 2.1\*50mm,1.9um  
 Oven Temperature : 45C

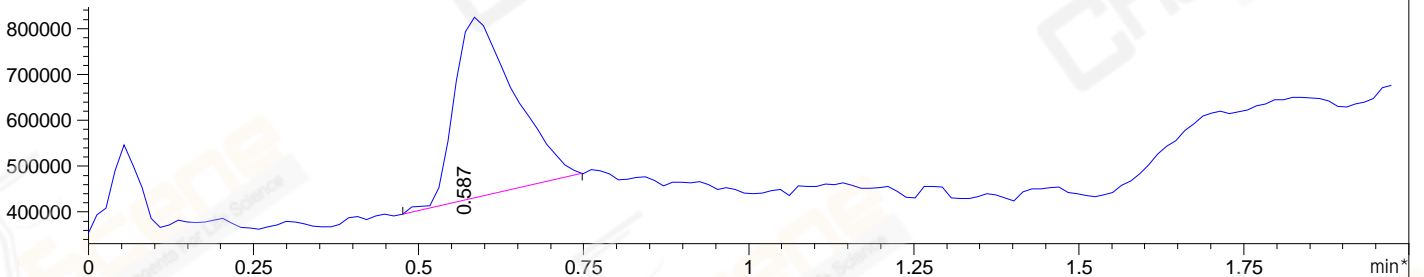
DAD1 A, Sig=214,4 Ref=off



DAD1 B, Sig=254,4 Ref=off



\*MSD1 TIC, MS File ES-API, Pos, Scan, Frag: 70



Integration Results for DAD1 A, Sig=214,4 Ref=off

RetTim	Width	Area	Height	Area%	MS(+)
0.56	0.02	2316.13	1537.41	100.00	83

Integration Results for DAD1 B, Sig=254,4 Ref=off

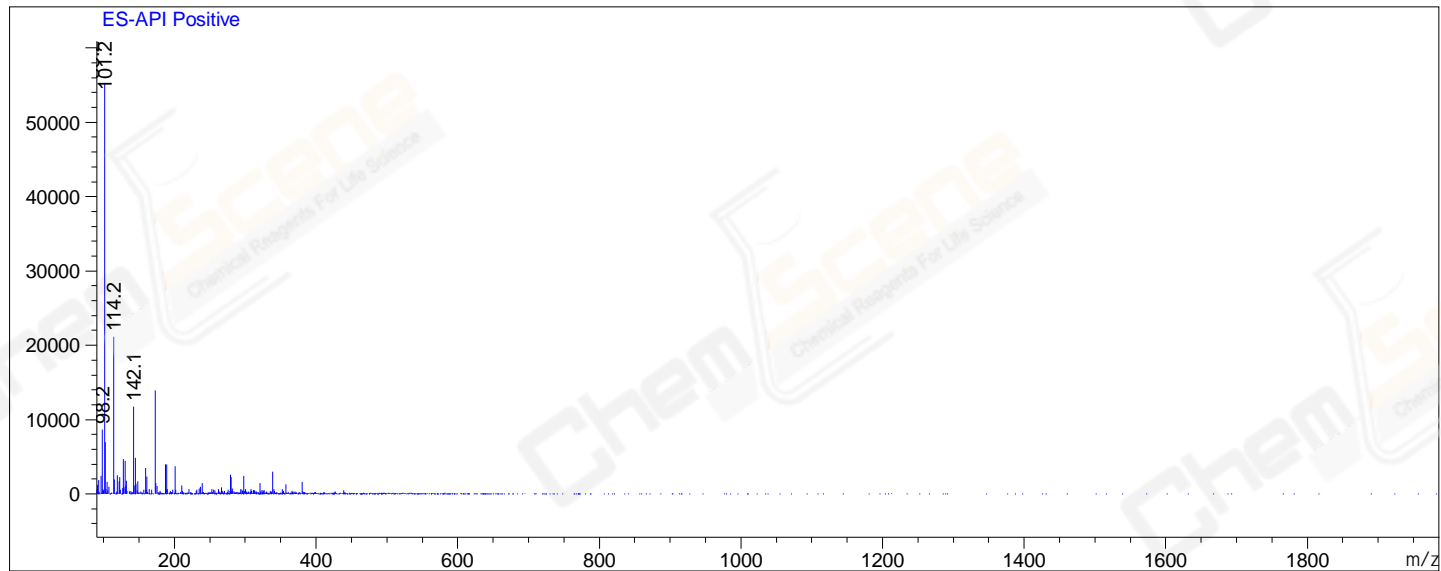
RetTim	Width	Area	Height	Area%	MS(+)
0.55	0.02	5.29	0.04	100.00	83

Integration Results for MSD1 TIC, MS File

RetTim	Width	Area	Height	Area%	MS(+)
0.59	0.10	2488428.50	393372.06	100.00	83

Ret. Time: 0.59

<<<< POSITIVE SPECTRA >>>>



\*\*\* End of Report \*\*\*