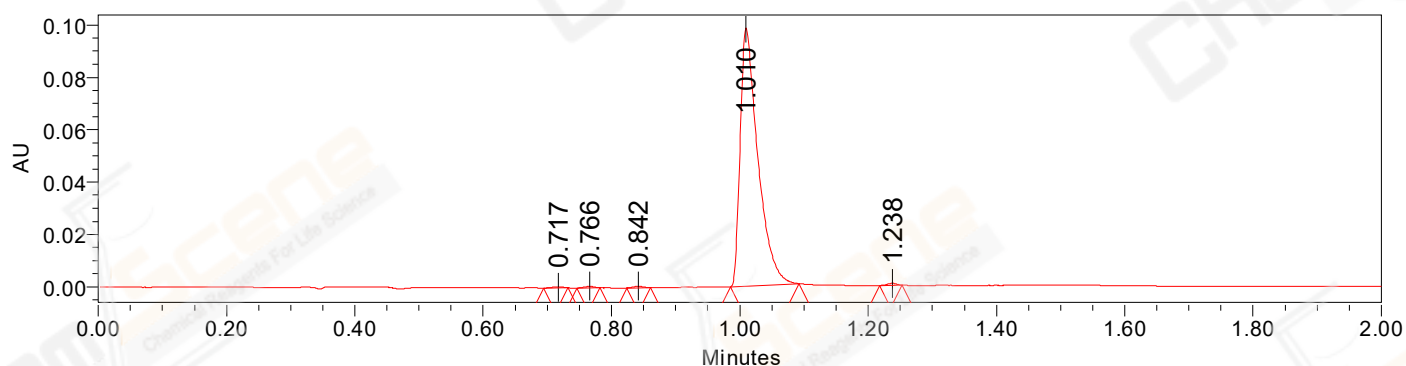


SAMPLE INFORMATION

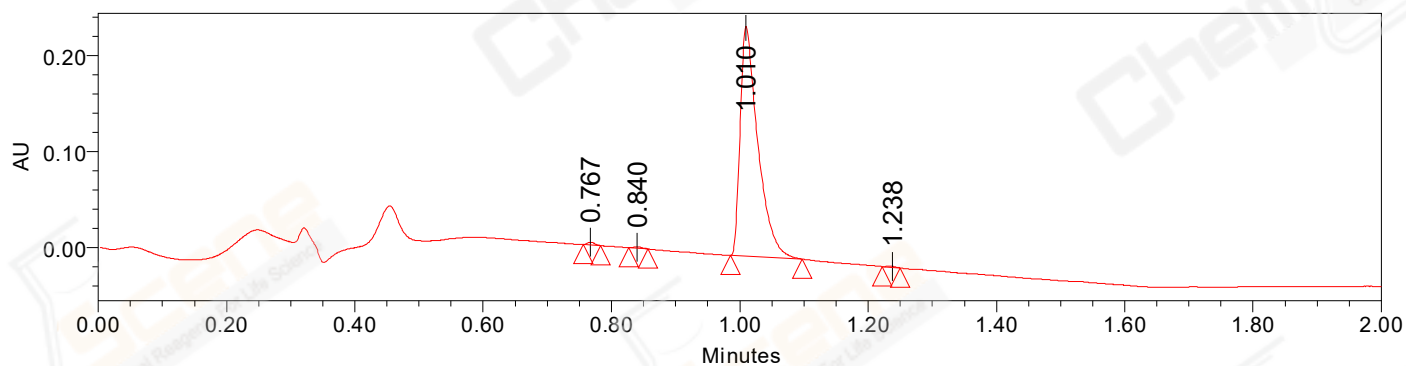
CAS NO.:	1029044-16-3	Acquired By:	LY
Vial:	2:B,6	Date Acquired:	12/1/2021 1:35:49 PM CST
Injection #:	1	Acq. Method Set:	1_POS_2MIN
Injection Volume:	0.50 ul	Date Processed:	12/2/2021 8:30:12 AM CST,
Run Time:	2.8 Minutes	Processing Method:	PDA_01, MS_scan
Sample Set Name:	20211201	Channel Name:	PDA Ch1 214nm@4.8nm, MS TIC,
		Column Name:	

Auto-Scaled Chromatogram



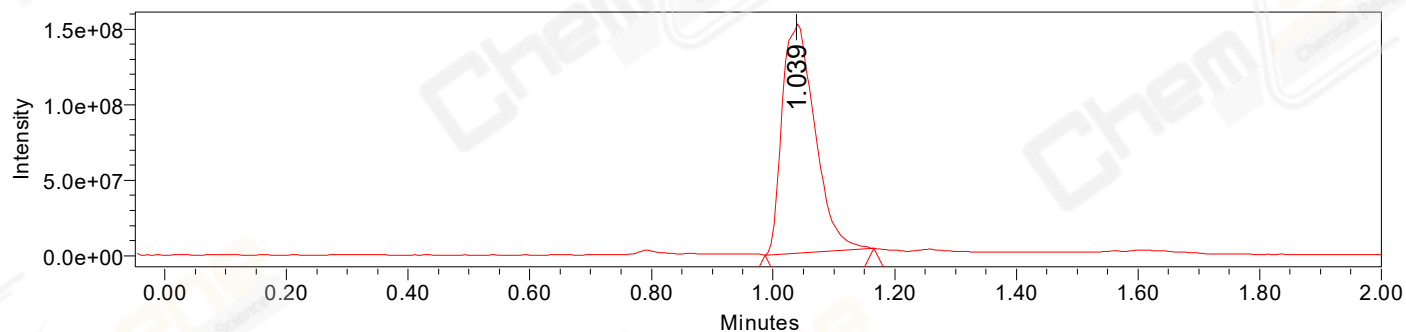
Processed Channel Descr. PDA Ch2 254nm@4.8nm

Auto-Scaled Chromatogram



Processed Channel Descr. PDA Ch1 214nm@4.8nm

Auto-Scaled Chromatogram



Processed Channel Descr. ACQ-SQD2 1: MS Scan MS TIC, Smoothed by 9 point Savitzky-Golay Filter., Time offset by -0.053 mins. (1: 150.00-1000.00 ES+, Centroid, CV=30)

Peak Results
Channel Name: PDA Ch2 254nm@4.8nm

	RT	Width (sec)	Area	Height	% Area	Channel Name
1	0.717	2.300	419	329	0.22	PDA Ch2 254nm@4.8nm
2	0.766	2.150	658	646	0.35	PDA Ch2 254nm@4.8nm
3	0.842	2.250	644	653	0.34	PDA Ch2 254nm@4.8nm
4	1.010	6.450	187792	98595	98.69	PDA Ch2 254nm@4.8nm
5	1.238	2.100	766	722	0.40	PDA Ch2 254nm@4.8nm

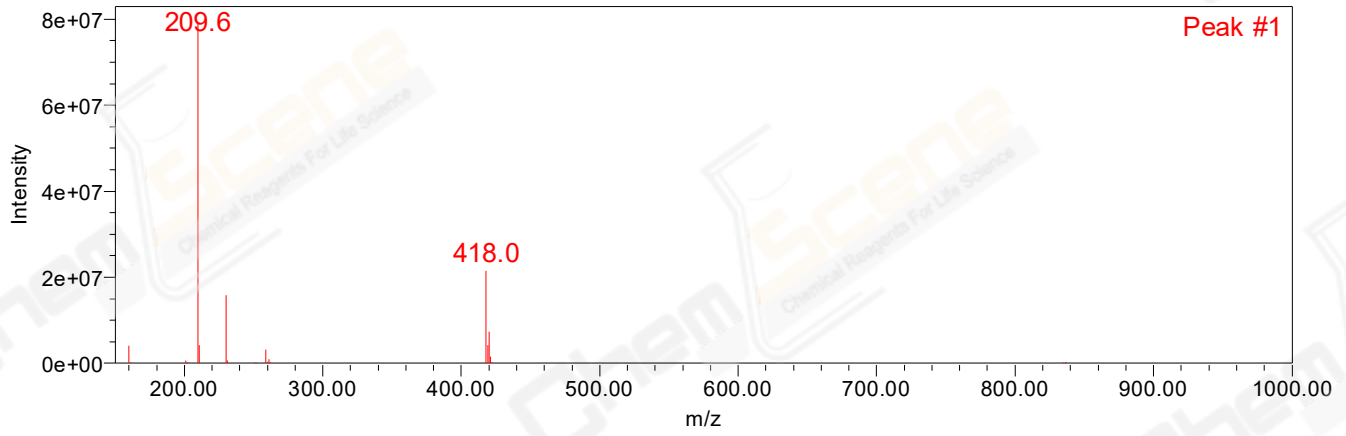
Peak Results
Channel Name: PDA Ch1 214nm@4.8nm

	RT	Width (sec)	Area	Height	% Area	Channel Name
1	0.767	1.650	2132	2795	0.46	PDA Ch1 214nm@4.8nm
2	0.840	1.800	1332	1425	0.29	PDA Ch1 214nm@4.8nm
3	1.010	6.750	456097	239510	99.05	PDA Ch1 214nm@4.8nm
4	1.238	1.650	902	978	0.20	PDA Ch1 214nm@4.8nm

Peak Results
Channel Name: MS TIC

	RT	Width (sec)	Area	Height	% Area	Channel Name
1	1.039	10.736	566676347	151029804	100.00	MS TIC

Match Plot



Retention Time 1.039 Channel Name MS TIC