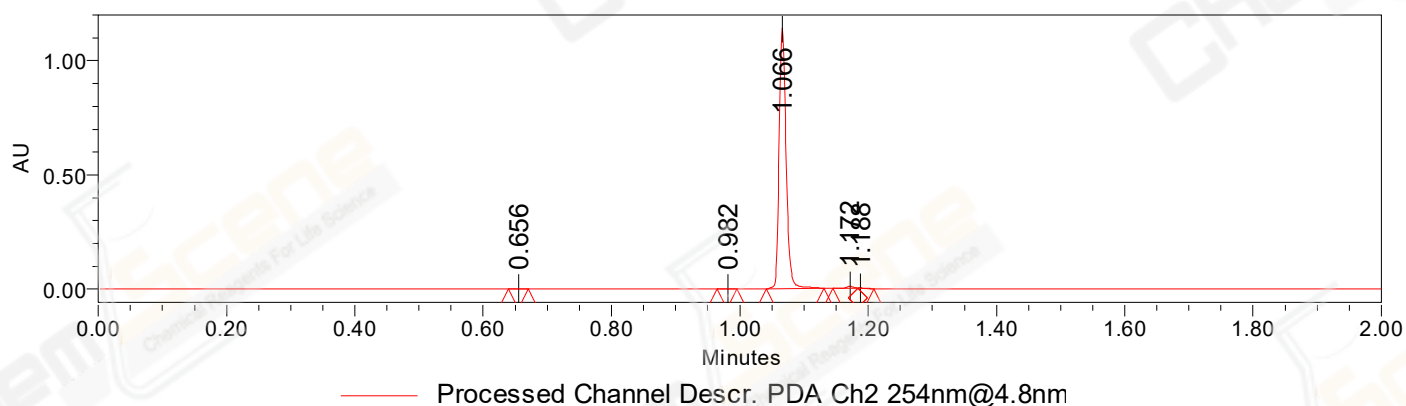


## SAMPLE INFORMATION

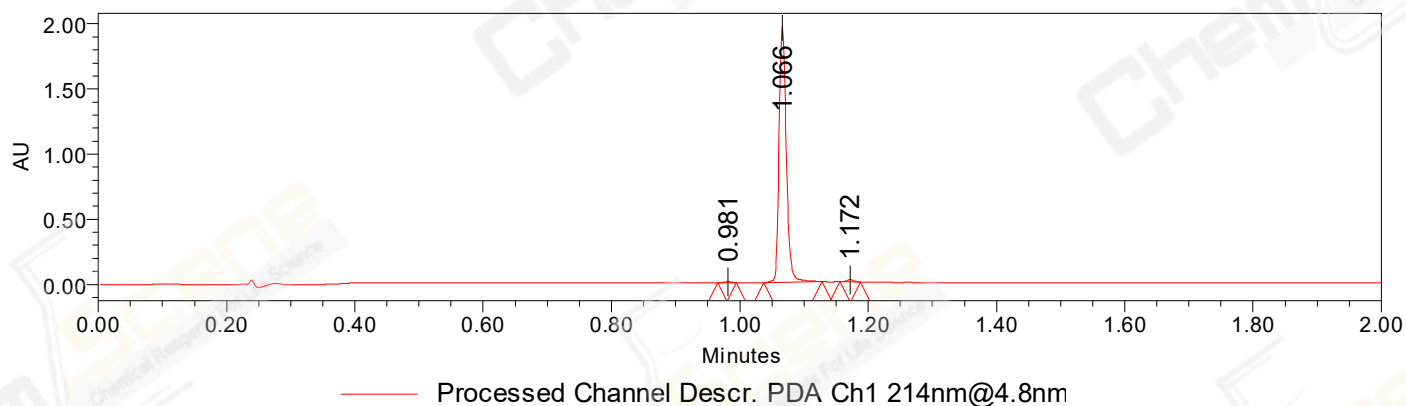
CAS NO.: 2170484-59-8  
Sample information: 1187069  
Vial: 2:A,3  
Injection #: 1  
Injection Volume: 0.20 ul  
Run Time: 2.8 Minutes  
Sample Set Name: 20220720

Acquired By: LY  
Date Acquired: 7/20/2022 3:16:08 PM CST  
Acq. Method Set: 1\_POS\_2MIN\_2000  
Date Processed: 7/21/2022 1:13:29 PM CST,  
Processing Method: PDA\_01, MS\_scan  
Channel Name: PDA Ch1 214nm@4.8nm, MS TIC,  
Column Name: A-RP-985

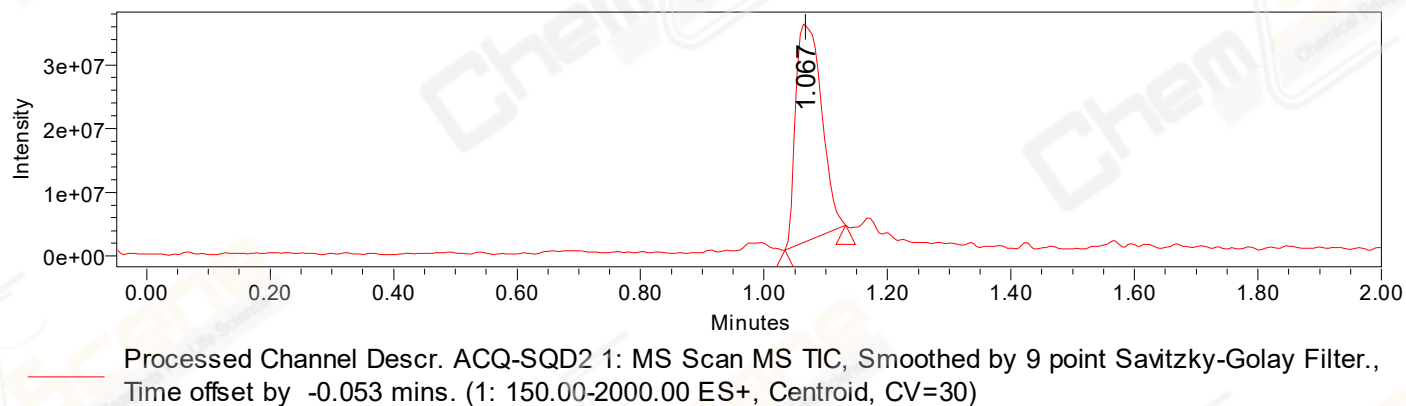
### Auto-Scaled Chromatogram



### Auto-Scaled Chromatogram



### Auto-Scaled Chromatogram



Peak Results  
Channel Name: PDA Ch2 254nm@4.8nm

	RT	Width (sec)	Area	Height	% Area	Base Peak (Combined) (m/z)	Channel Name
1	0.656	1.850	1168	1644	0.13	362.84	PDA Ch2 254nm@4.8nm
2	0.982	1.850	1685	2516	0.19	1872.47	PDA Ch2 254nm@4.8nm
3	1.066	5.350	861440	1144387	98.59	723.80	PDA Ch2 254nm@4.8nm
4	1.172	2.350	7592	9486	0.87	704.90	PDA Ch2 254nm@4.8nm
5	1.188	1.500	1904	2866	0.22	704.09	PDA Ch2 254nm@4.8nm

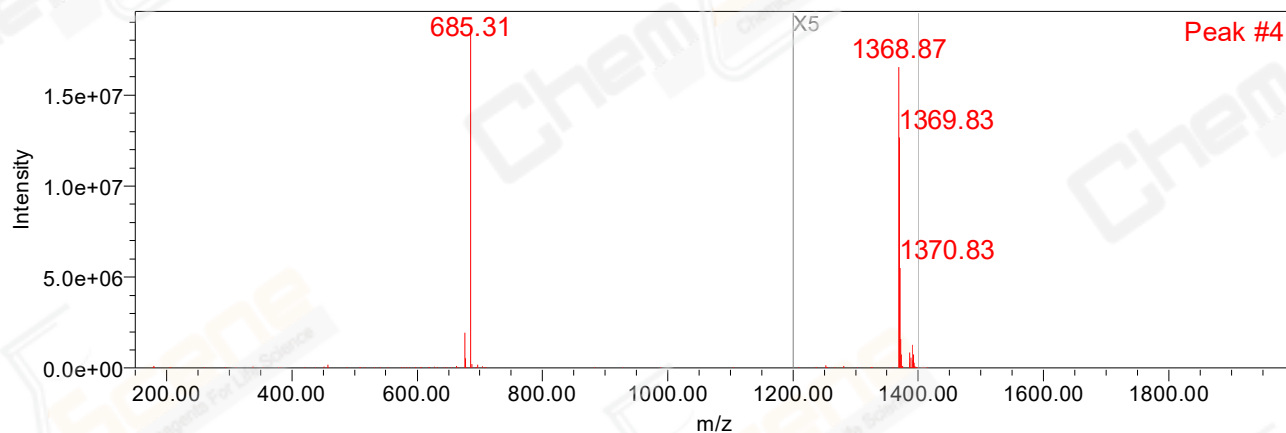
Peak Results  
Channel Name: PDA Ch1 214nm@4.8nm

	RT	Width (sec)	Area	Height	% Area	Base Peak (Combined) (m/z)	Channel Name
1	0.981	1.700	5643	8588	0.36	1872.47	PDA Ch1 214nm@4.8nm
2	1.066	5.450	1539868	1971215	98.86	723.80	PDA Ch1 214nm@4.8nm
3	1.172	1.950	12093	17381	0.78	684.96	PDA Ch1 214nm@4.8nm

Peak Results  
Channel Name: MS TIC

	RT	Width (sec)	Area	Height	% Area	Base Peak (Combined) (m/z)	Channel Name
1	1.067	5.904	99189928	34770301	100.00	685.32	MS TIC

Match Plot



Retention Time 1.067 Channel Name MS TIC