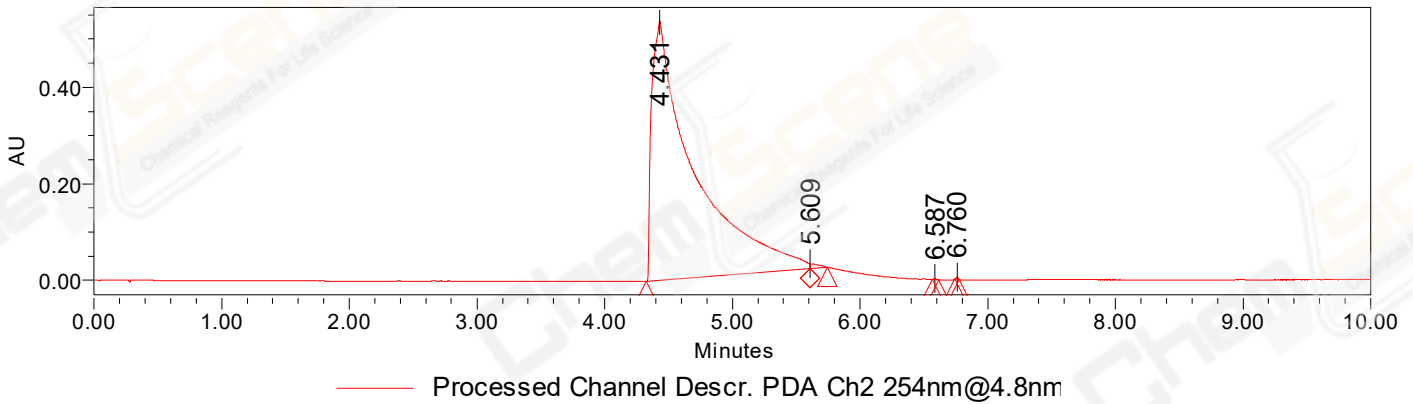


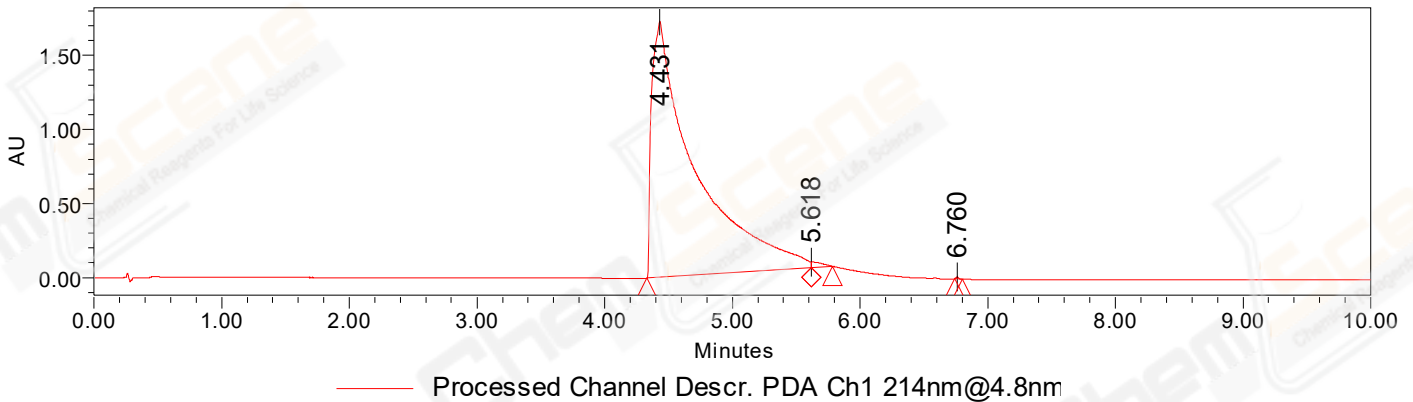
SAMPLE INFORMATION

CAS NO.:	878111-18-3	Acquired By:	LY
Sample Information:	1162588-	Date Acquired:	9/8/2022 5:13:44 PM CST
Vial:	1:B,4	Acq. Method Set:	1_POS_10MIN
Injection #:	1	Date Processed:	9/9/2022 2:28:01 PM CST,
Injection Volume:	1.00 ul	Processing Method:	PDA_01, MS_scan
Run Time:	11.0 Minutes	Sample Set Name:	20220908
Method Information :	Mobile Phase: A: waters(0.01%FA) B:ACN(0.01%FA)		
	Gradient: 5% to 95%B within 8.0min		
	Flow Rate :0.6ml/min		
	Column :Poroshell 120 EC- C18, 2.1*50mm,1.9um A-RP-750		
	Oven Temperature : 45C		

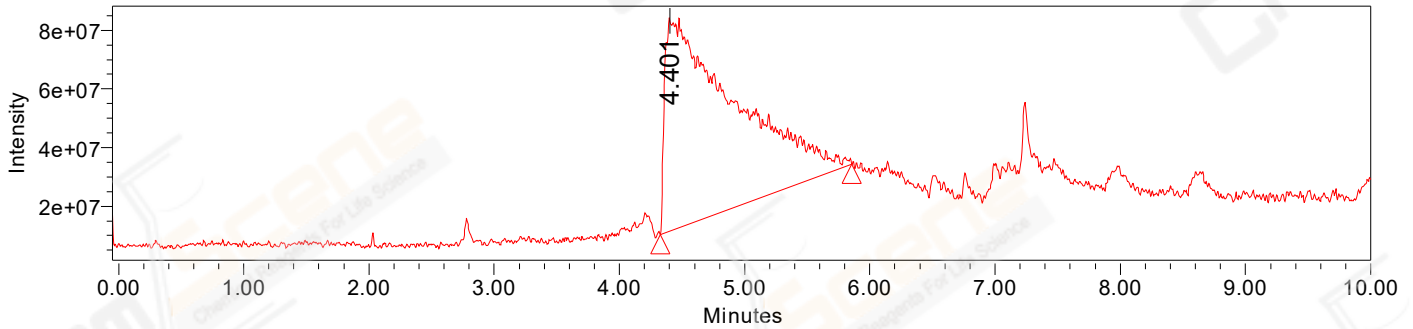
Auto-Scaled Chromatogram



Auto-Scaled Chromatogram



Auto-Scaled Chromatogram



Processed Channel Descr. ACQ-SQD2 1: MS Scan MS TIC, Smoothed by 9 point Savitzky-Golay Filter., Time offset by -0.053 mins. (1: 150.00-2000.00 ES+, Centroid, CV=30)

Peak Results

Channel Name: PDA Ch2 254nm@4.8nm

	RT	Width (sec)	Area	Height	% Area	Base Peak (Combined) (m/z)	Channel Name
1	4.431	77.000	12412989	538748	99.58	585.14	PDA Ch2 254nm@4.8nm
2	5.609	8.250	44023	9434	0.35	585.19	PDA Ch2 254nm@4.8nm
3	6.587	3.200	3047	2110	0.02	602.18	PDA Ch2 254nm@4.8nm
4	6.760	2.050	4982	4292	0.04	156.01	PDA Ch2 254nm@4.8nm

Peak Results

Channel Name: PDA Ch1 214nm@4.8nm

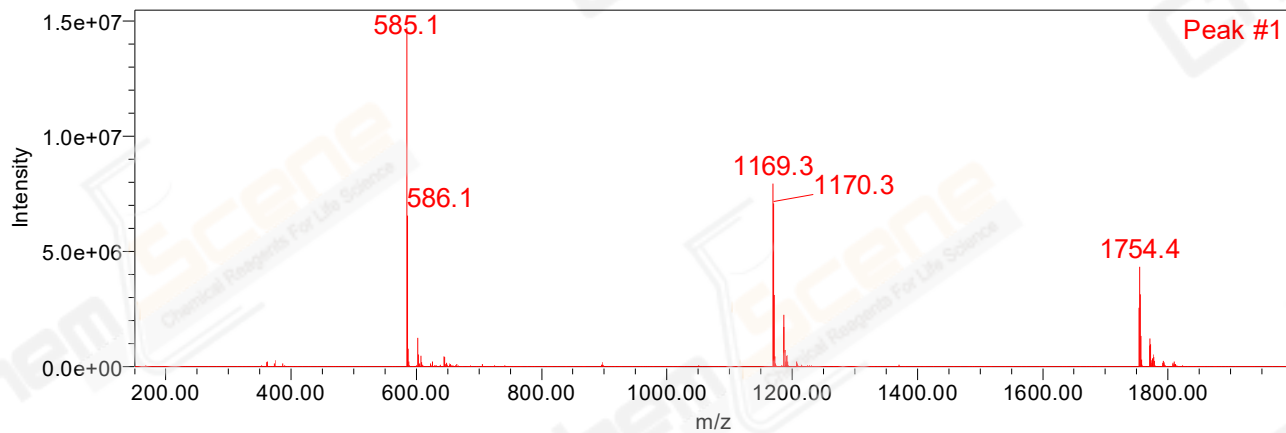
	RT	Width (sec)	Area	Height	% Area	Base Peak (Combined) (m/z)	Channel Name
1	4.431	77.150	40934924	1730758	99.43	585.14	PDA Ch1 214nm@4.8nm
2	5.618	10.000	214846	37768	0.52	585.17	PDA Ch1 214nm@4.8nm
3	6.760	3.850	18352	13585	0.04	284.11	PDA Ch1 214nm@4.8nm

Peak Results

Channel Name: MS TIC

	RT	Width (sec)	Area	Height	% Area	Base Peak (Combined) (m/z)	Channel Name
1	4.401	91.794	2781121318	72763845	100.00	585.14	MS TIC

Match Plot



Retention Time 4.401 Channel Name MS TIC