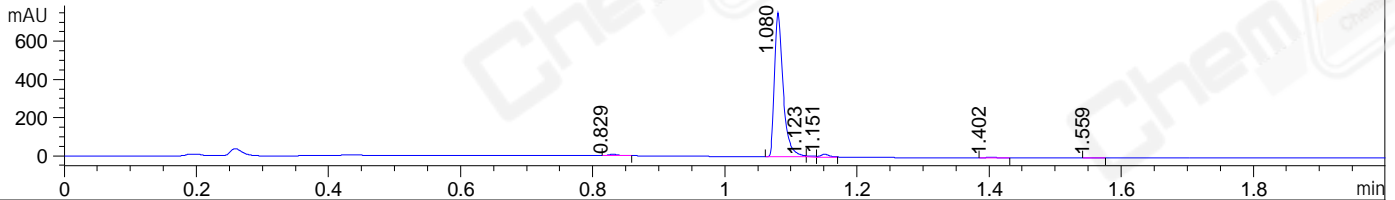
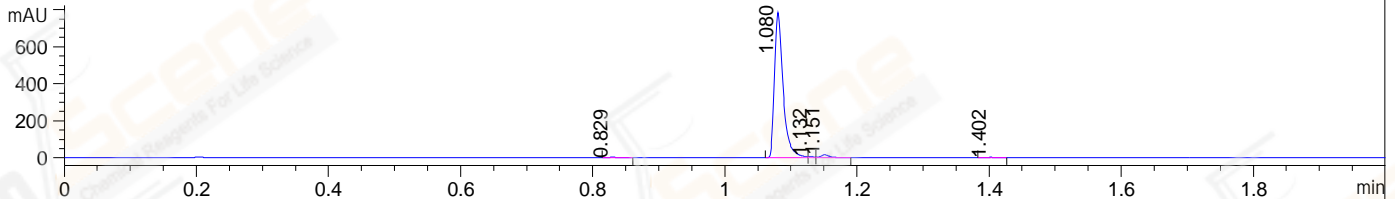


File ..S\data\LY\2021-12-09\HP11587-001-2-037522.D Tgt Mass (EZX):
 Injection Date : 9 Dec 21 10:01 am +0800 Seq. Line : 0
 Sample Name : HP11587-001-2 Location : P1-C-06
 Acq. Operator : admin Inj : 1
 Spec. Reported : MS Integration Inj Volume : 0.2 ul
 Acq. Method : D:\LCMS\Methods\1-POS-UPLC2.0MIN(0.8ML)-(150-1000).M
 Analysis Method : D:\LCMS\METHODS\1-POS-UPLC2.0MIN(0.8ML)-(150-1000).M
 CAS NO. : 101623-68-1 Walkup method: '1-POS-2MIN' Target:
 Method Info : Mobile Phase: A: water(0.01%TFA) B:ACN(0.01%TFA)
 Gradient: 5% to 95%B within 0.6 min
 Flow Rate : 0.8ml/min
 Column :Poroshell 120 EC- C18, 2.1*50mm,1.9um
 Oven Temperature : 45C

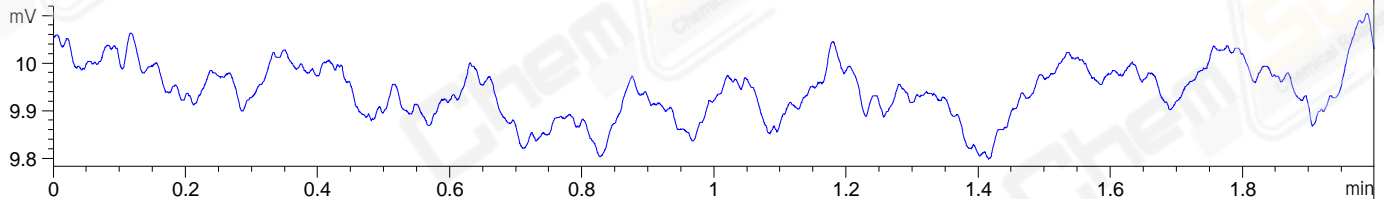
DAD1 A, Sig=214,4 Ref=off



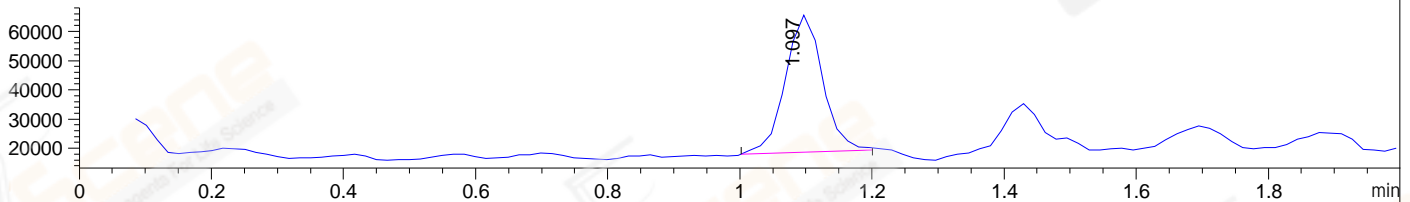
DAD1 B, Sig=254,4 Ref=off



ELS1 A, ELSD Signal



MSD1 TIC, MS File ES-API, Pos, Scan, Frag: 70



Integration Results for DAD1 A, Sig=214,4 Ref=off

RetTim	Width	Area	Height	Area%	MS (+)
0.83	0.02	6.87	7.15	0.95	161
1.08	0.02	692.29	760.22	95.73	161
1.12	0.01	4.84	6.11	0.67	161
1.15	0.01	12.65	14.26	1.75	161
1.40	0.02	4.92	4.58	0.68	161
1.56	0.02	1.64	1.25	0.23	161

Integration Results for DAD1 B, Sig=254,4 Ref=off

RetTim	Width	Area	Height	Area%	MS (+)
0.83	0.02	1.36	1.41	0.18	161
1.08	0.02	720.55	789.72	97.08	161
1.13	0.01	3.72	6.38	0.50	161
1.15	0.02	14.76	15.46	1.99	161
1.40	0.02	1.84	1.72	0.25	161

Integration Results for ELS1 A, ELSD Signal

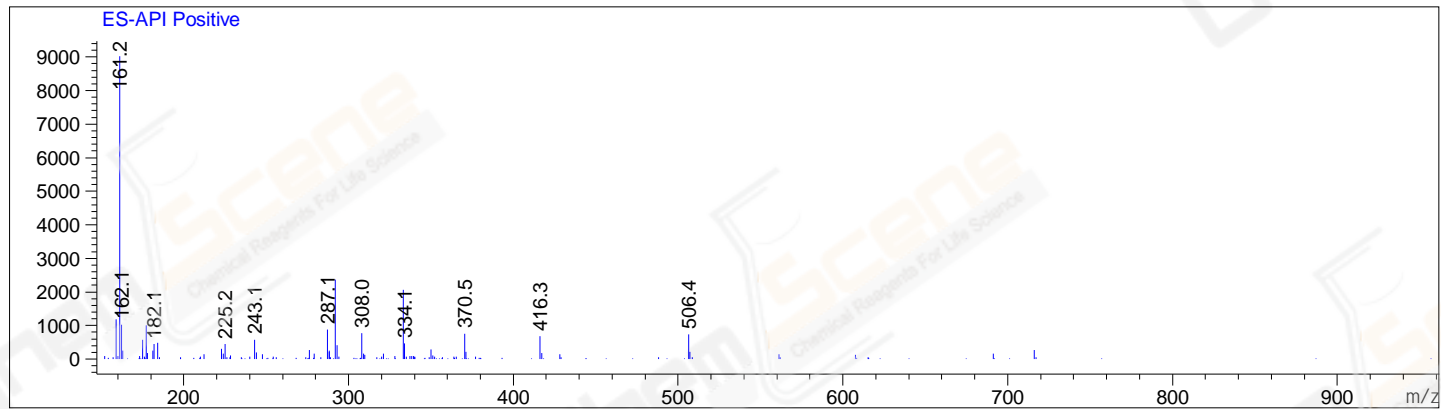
Integration Results for MSD1 TIC, MS File

RetTim	Width	Area	Height	Area%	MS(+)
1.10	0.06	183833.91	47785.30	100.00	161

RetTim	Width	Area	Height	Area%	MS(+)
--------	-------	------	--------	-------	-------

Ret. Time: 1.10

<<<< POSITIVE SPECTRA >>>>



*** End of Report ***