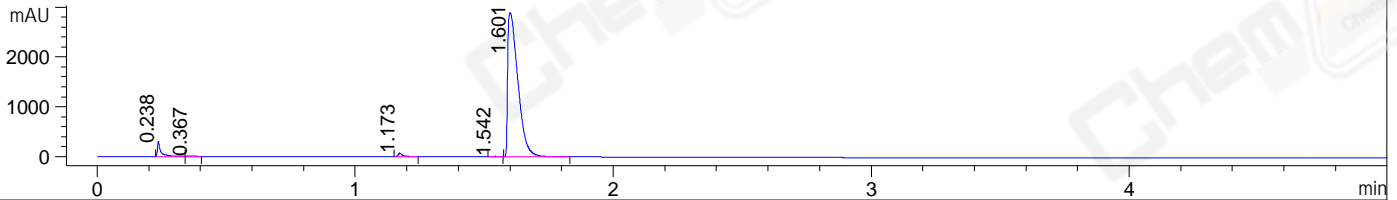
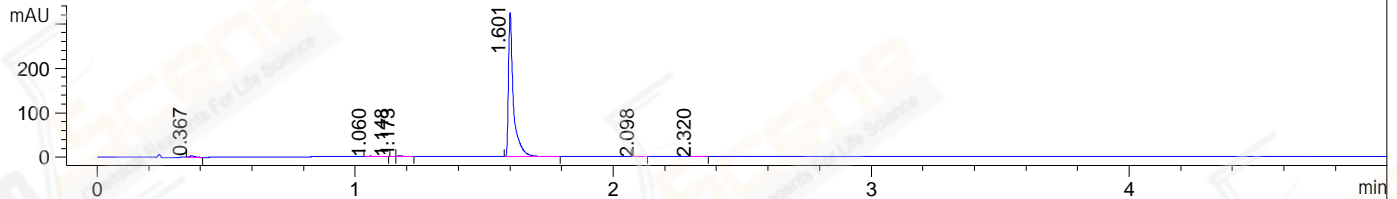


File ..23-01-28\JXT19314-016-3-UPLC-MS-03-050064.D Tgt Mass (EZX):
 Injection Date : 28-Jan-23, 09:48:43 Seq. Line : 0
 Sample Name : JXT19314-016-3 Location : P1-A-04
 Acq. Operator : LiYong Inj : 1
 Spec. Reported : MS Integration Inj Volume : 1 ul
 Acq. Method : E:\Chem32\1\Methods\1-POS-UPLC5.0MIN(0.8ML)-(150-2000).M
 Analysis Method : E:\CHEM32\1\METHODS\1-POS-UPLC5.0MIN(0.8ML)-(150-2000).M
 CAS NO. : 13171-93-2 WalkUp method: '1-POS-5MIN' Project: HM-1530-001KF
 Method Info : Mobile Phase: A: water(0.01%TFA) B:ACN(0.01%TFA)
 Gradient: 5% to 95%B within 3 min
 Flow Rate :0.8ml/min
 Column :Poroshell 120 EC- C18, 2.1*50mm,1.9um
 Oven Temperature : 45C

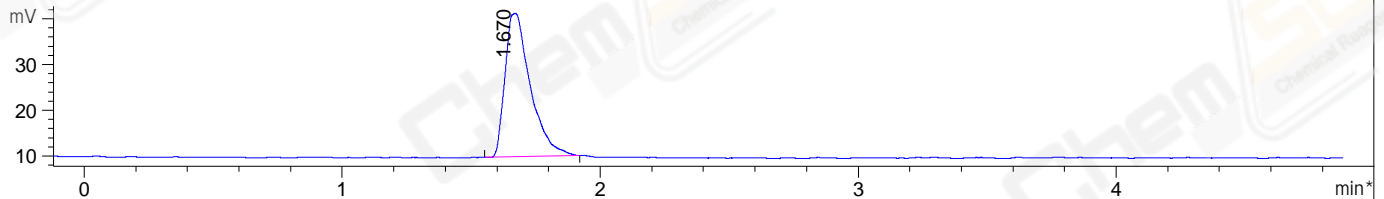
DAD1 A, Sig=214,4 Ref=off



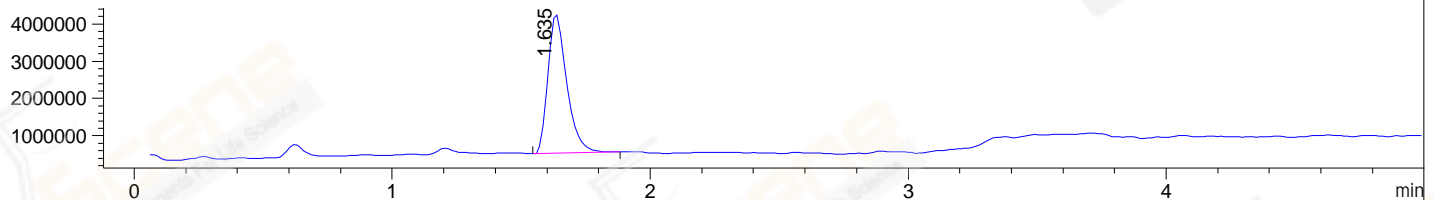
DAD1 B, Sig=254,4 Ref=off



*ELS1 A, ELSD Signal



MSD1 TIC, MS File ES-API, Pos, Scan, Frag: 70



Integration Results for DAD1 A, Sig=214,4 Ref=off

RetTim	Width	Area	Height	Area%	MS (+)
0.24	0.02	291.74	280.83	3.50	83
0.37	0.03	13.62	7.04	0.16	83
1.17	0.02	87.14	67.41	1.05	83
1.54	0.02	10.38	9.33	0.12	83
1.60	0.04	7925.19	2886.88	95.16	414

Integration Results for DAD1 B, Sig=254,4 Ref=off

RetTim	Width	Area	Height	Area%	MS (+)
0.37	0.02	4.02	3.21	0.91	83
1.06	0.02	1.82	1.16	0.41	83
1.15	0.01	0.36	0.50	0.08	83
1.17	0.02	2.13	1.86	0.48	83
1.60	0.02	433.28	316.12	97.96	414
2.10	0.02	0.31	0.20	0.07	83
2.32	0.02	0.38	0.33	0.09	83

Integration Results for ELS1 A, ELSD Signal

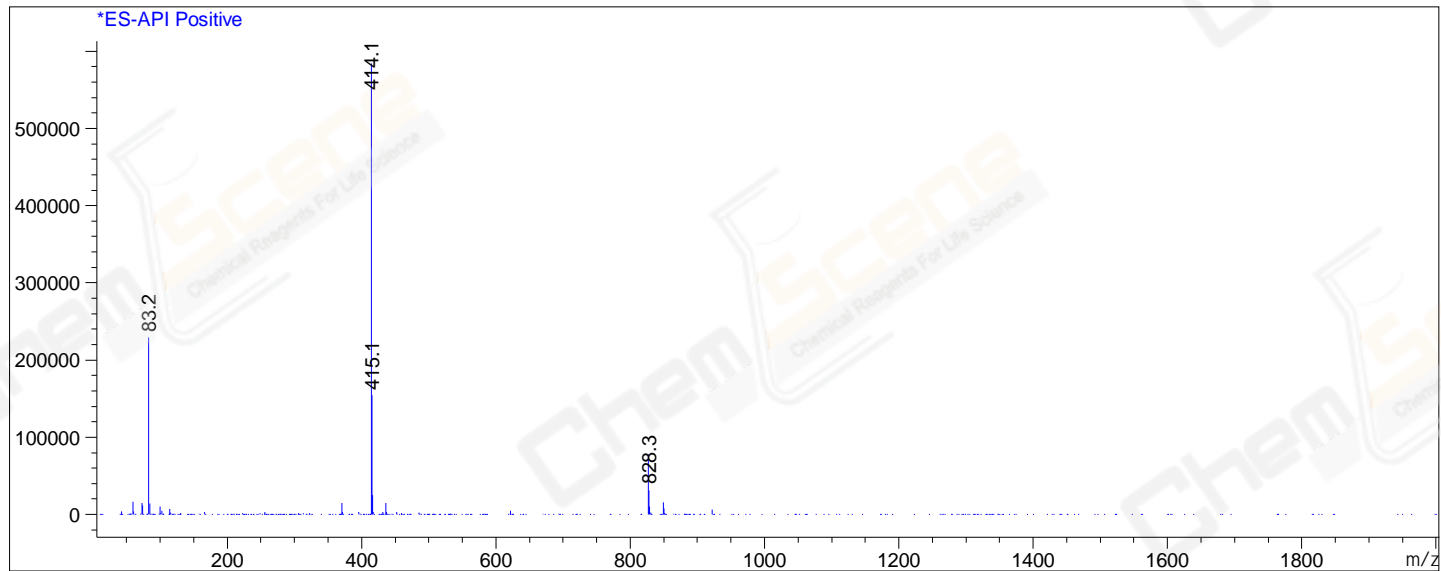
RetTim	Width	Area	Height	Area%	MS(+)
1.67	0.09	213.41	31.39	100.00	414

Integration Results for MSD1 TIC, MS File

RetTim	Width	Area	Height	Area%	MS(+)
1.63	0.08	18941500.00	3744122.50	100.00	414

Ret. Time: 1.63

<<<< POSITIVE SPECTRA >>>>



*** End of Report ***