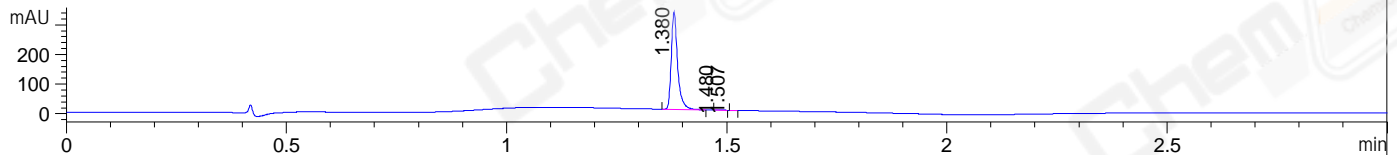
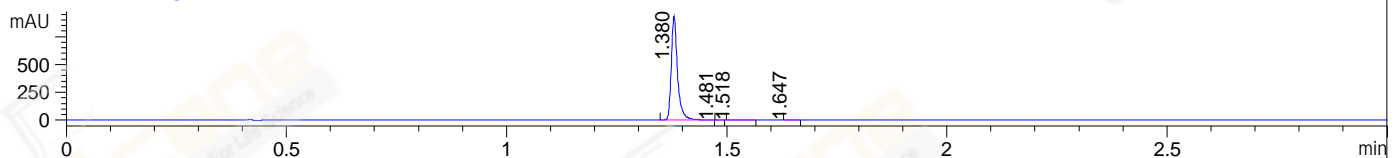


File ..3\Data\20171010\20171010\LJ2017-1009-0033.D Tgt Mass (CHM):
 Injection Date : 10 Oct 17 7:49 pm +0800 Seq. Line : 130
 Sample Name : LJ2017-1009-0033 Location : P2-A-07
 Acq. Operator : SYSTEM Inj : 1
 Spec. Reported : MS Integration Inj Volume : 1 ul
 Acq. Method : D:\LCMS03\Data\20171010\20171010\1-POS-3MIN.M
 Analysis Method : D:\LCMS03\Data\20171010\20171010\1-POS-3MIN.M
 CAS NO. : 582-24-1
 Method Info : Mobile Phase: A: water(0.01%TFA) B:ACN(0.01%TFA)
 Gradient: 5% to 95%B within 1.3 min
 Flow Rate :1.8ml/min
 Column :SunFire C18, 4.6*50mm,3.5um A-RP-186
 Oven Temperature : 45C

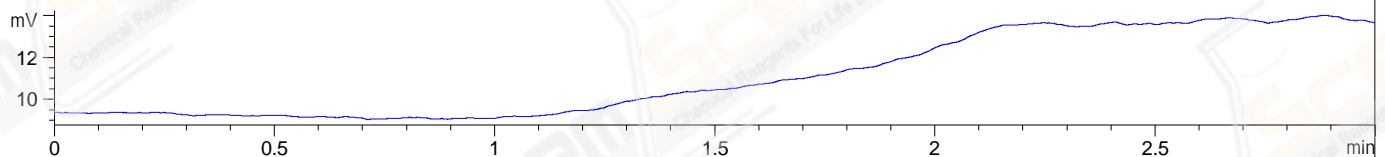
DAD1 A, Sig=214,4 Ref=off



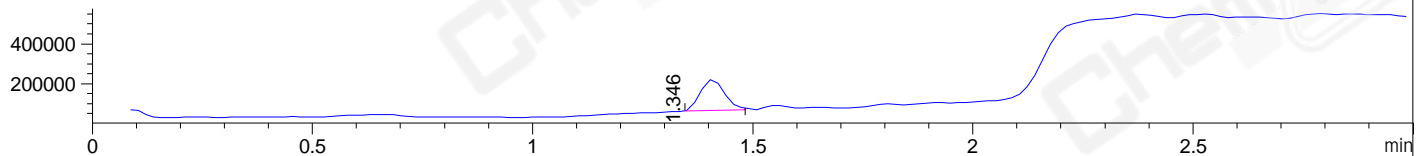
DAD1 B, Sig=254,4 Ref=off



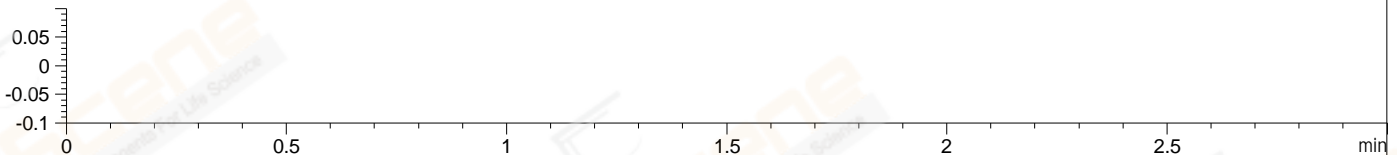
ELS1 A, ELSD Signal



MSD1 TIC, MS File ES-API, Pos, Scan, Frag: 70



Ion 0, MSD1 0, Target Mass 0 Positive, EIC=-0.30:0.70



Integration Results for DAD1 A, Sig=214,4 Ref=off

RetTim	Width	Area	Height	Area%	MS (+)
1.38	0.02	328.91	326.39	99.73	137
1.48	0.01	0.53	0.63	0.16	130
1.51	0.01	0.35	-0.09	0.11	130

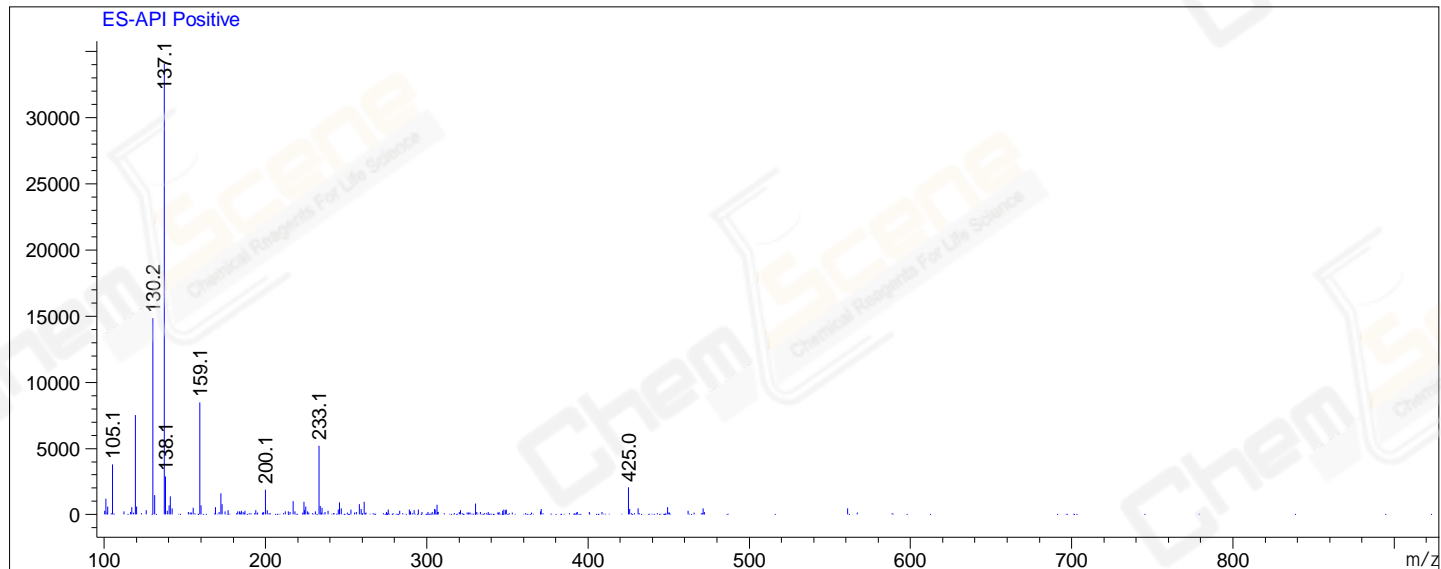
Integration Results for DAD1 B, Sig=254,4 Ref=off

RetTim	Width	Area	Height	Area%	MS (+)
1.38	0.01	911.99	926.72	99.87	137
1.48	0.01	0.06	0.09	0.01	130
1.52	0.01	0.65	0.67	0.07	130
1.65	0.02	0.47	0.44	0.05	130

Integration Results for MSD1 TIC, MS File

RetTim	Width	Area	Height	Area%	MS (+)
1.35	0.06	589439.13	1299.79	100.00	137

Ret. Time: 1.35 <<<< POSITIVE SPECTRA >>>>



*** End of Report ***