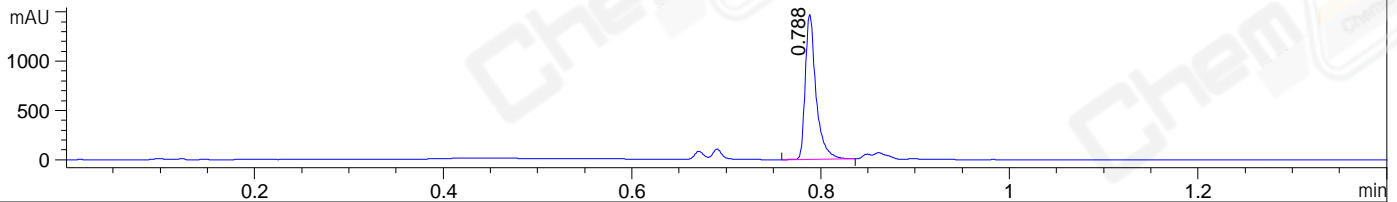
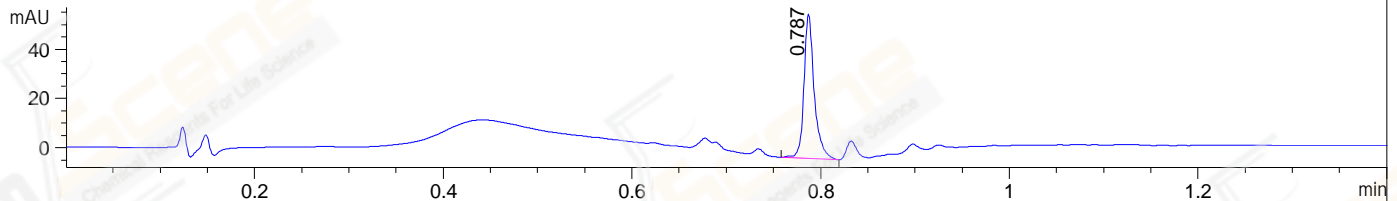


File ..23-03-14\ZHW21470-011-P1-LCMS-06-00053659.D Tgt Mass (EZX):  
 Injection Date : 14-Mar-23, 14:53:31 Seq. Line : 0  
 Sample Name : ZHW21470-011-P1 Location : P1-D-08  
 Acq. Operator : admin Inj : 1  
 Spec. Reported : MS Integration Inj Volume : 0.5 ul  
 Acq. Method : D:\chem\Methods\1-POS-C18-F1.8-1.4minBQ C2.M  
 Analysis Method : D:\chem\Methods\1-POS-C18-F1.8-1.4minBQ C2.M  
 CAS NO. : 630108-94-0  
 Method Info : Mobile Phase: A: water(0.01%TFA) B:ACN(0.01%TFA)  
 Gradient: 5% to 95%B within 0.5 min  
 Flow Rate :1.8ml/min  
 Column :Shim-pack Scepter C18-120\_33x3mm\_3µm A-RP-1525  
 Oven Temperature : 45C

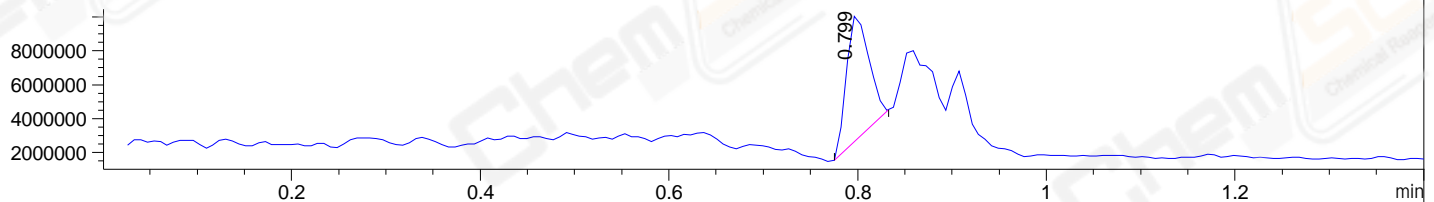
DAD1 A, Sig=214,4 Ref=off



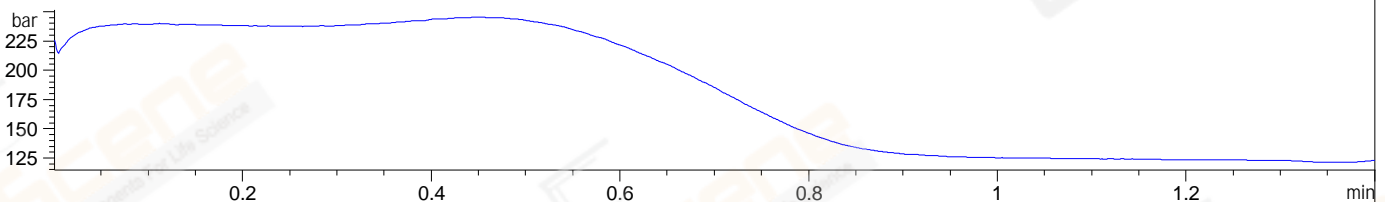
DAD1 B, Sig=254,4 Ref=off



MSD1 TIC, MS File ES-API, Pos, Scan, Frag: 135



PMP1, PMP1A, Pressure



## Integration Results for DAD1 A, Sig=214,4 Ref=off

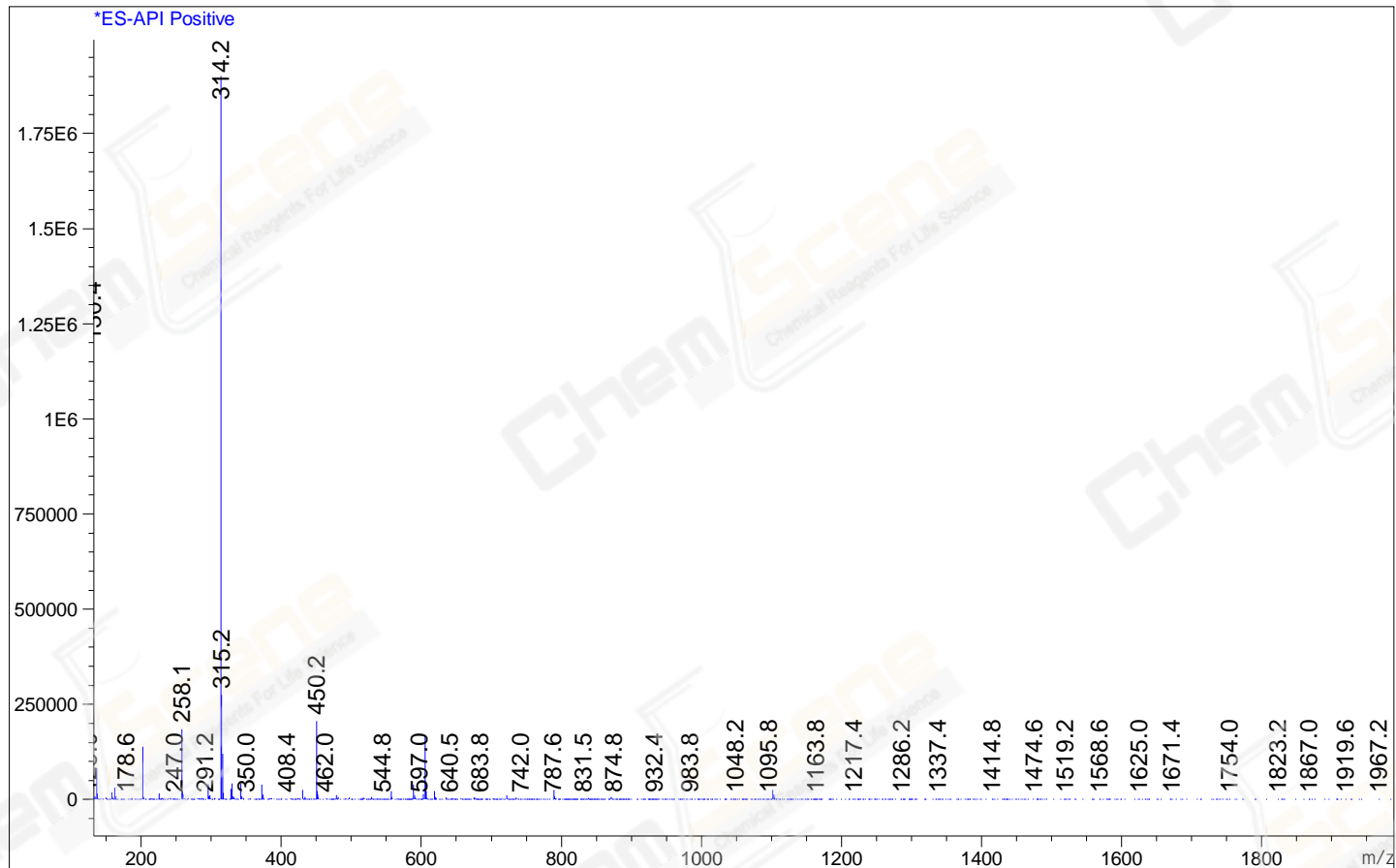
RetTim	Width	Area	Height	Area%	MS (+)
0.79	0.01	1169.74	1463.55	100.00	*** 13

## Integration Results for DAD1 B, Sig=254,4 Ref=off

RetTim	Width	Area	Height	Area%	MS (+)
0.79	0.01	44.29	58.12	100.00	*** 13

Ret. Time: 0.80

&lt;&lt;&lt;&lt; POSITIVE SPECTRA &gt;&gt;&gt;&gt;



\*\*\* End of Report \*\*\*