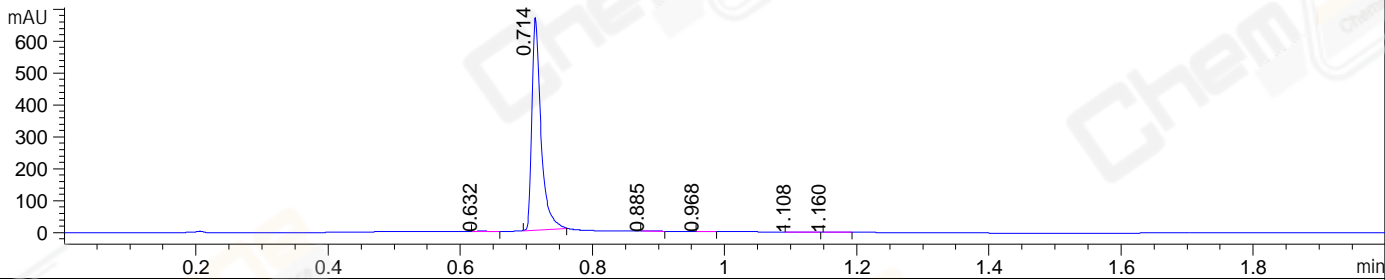
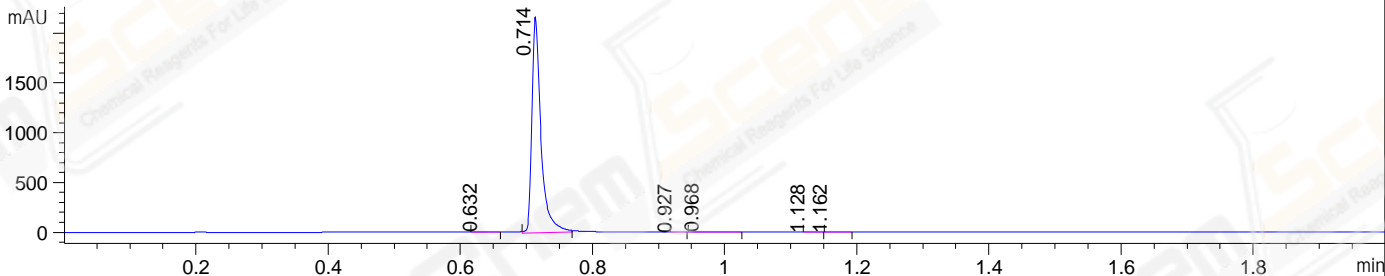


File ..03-31\BIZ2023-331-WLQ32-UPLC-MS-01-014665.D Tgt Mass (EZX):
 Injection Date : 31 Mar 23 5:20 pm +0800 Seq. Line : 0
 Sample Name : BIZ2023-331-WLQ32 Location : P2-F-02
 Acq. Operator : LY_2278 Inj : 1
 Spec. Reported : MS Integration Inj Volume : 0.5 ul
 Acq. Method : D:\LCMS\Methods\1-POS-UPLC2.0MIN(0.8ML)-(0-2000).M
 Analysis Method : D:\LCMS\METHODS\1-POS-UPLC2.0MIN(0.8ML)-(0-2000).M
 CAS NO. : 582-24-1 Walkup method: '1-POS-2MIN(0-2000)' Project: BIZ2023 Target:
 Method Info : Mobile Phase: A: water(0.01%TFA) B:ACN(0.01%TFA)
 Gradient: 5% to 95%B within 0.6 min
 Flow Rate :0.8ml/min
 Column :Poroshell 120 EC- C18, 2.1*50mm,1.9um A-RP-517
 Oven Temperature : 45C

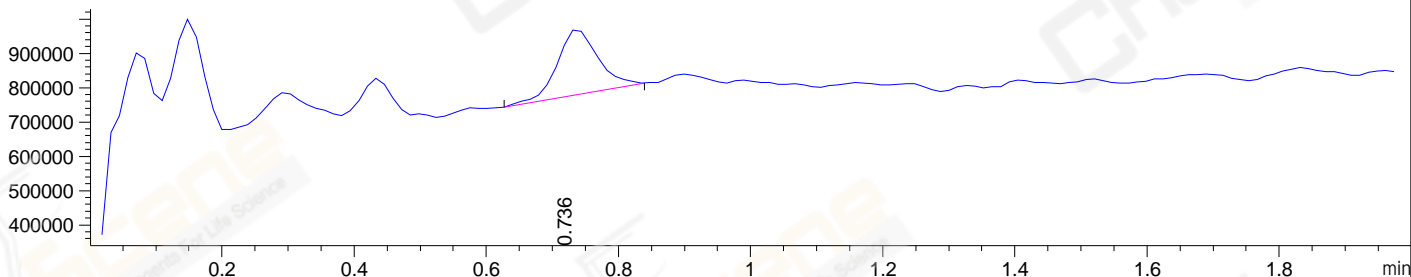
DAD1 A, Sig=214,4 Ref=off



DAD1 B, Sig=254,4 Ref=off



MSD1 TIC, MS File ES-API, Pos, Scan, Frag: 70



Integration Results for DAD1 A, Sig=214,4 Ref=off

RetTim	Width	Area	Height	Area%	MS(+)
0.63	0.01	0.75	0.80	0.12	137
0.71	0.02	641.08	668.16	99.54	102
0.89	0.01	1.00	1.35	0.16	102
0.97	0.01	0.45	0.62	0.07	102
1.11	0.01	0.39	0.41	0.06	102
1.16	0.01	0.39	0.47	0.06	102

Integration Results for DAD1 B, Sig=254,4 Ref=off

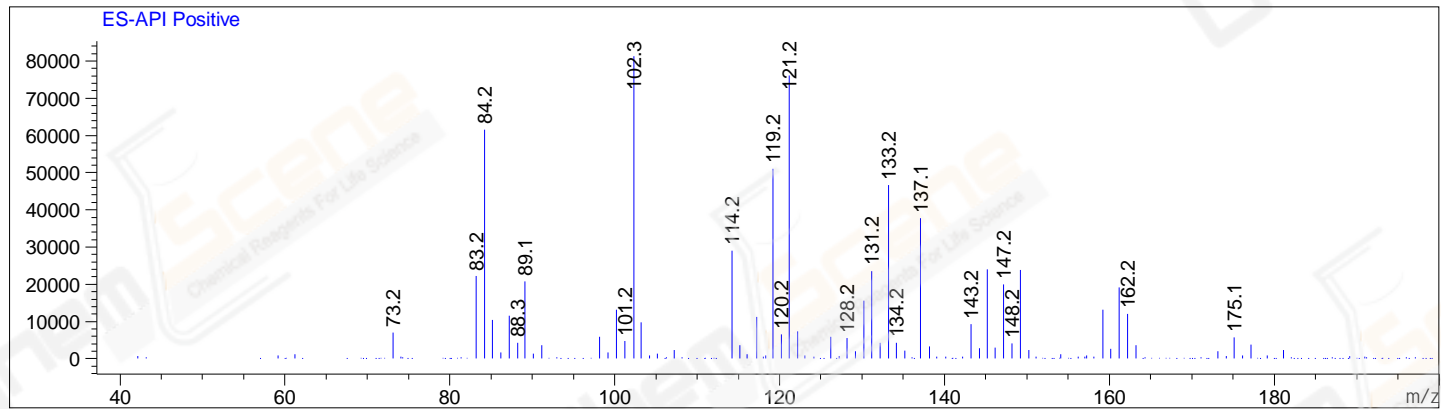
RetTim	Width	Area	Height	Area%	MS(+)
0.63	0.01	2.24	2.34	0.11	137
0.71	0.02	2095.36	2180.92	99.82	102
0.93	0.01	0.14	0.19	0.01	102
0.97	0.01	1.22	1.28	0.06	102
1.13	0.01	0.04	0.05	0.00	102
1.16	0.01	0.23	0.25	0.01	102

Integration Results for MSD1 TIC, MS File

RetTim	Width	Area	Height	Area%	MS(+)
0.74	0.06	813573.31	192299.83	100.00	102

Ret. Time: 0.74

<<<< POSITIVE SPECTRA >>>>



*** End of Report ***