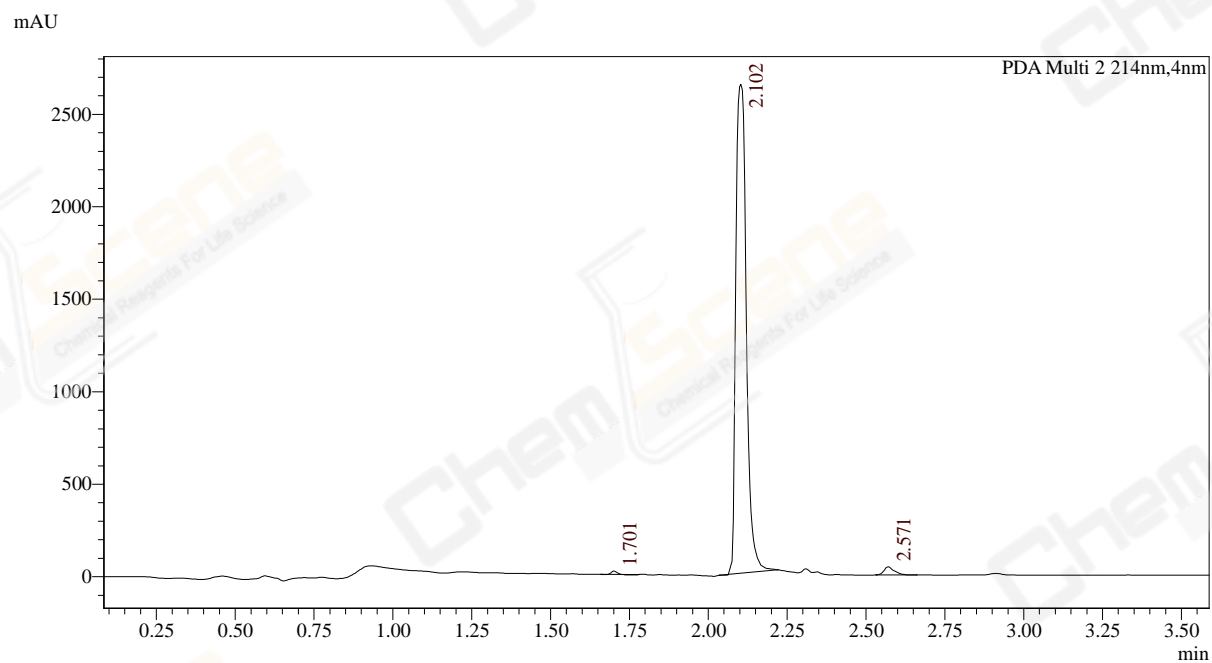


LCMS Analysis Report

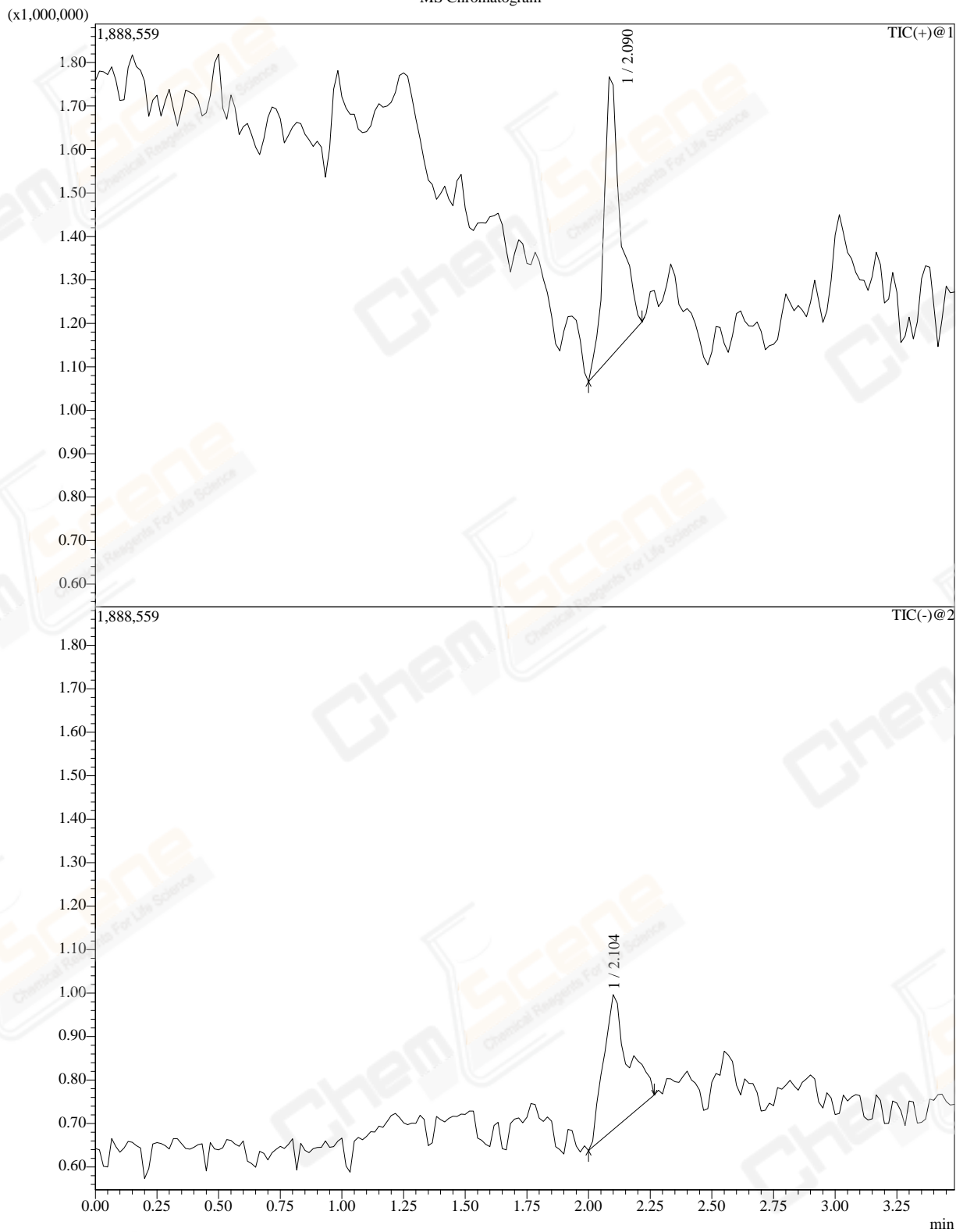
Sample Information

CAS NO.: :1243313-06-5
Vial :28
Injection Volume :0.5
Analysis date/time :2023/4/20 10:36:23
Processing date/time :2011/6/16 9:46:28
Analyst :Lvmeimei
Processor :System Administrator
Method Filename :E:\LCMS-04\METHOD\LCMS-1.2-4min(100-1250)(5-95).lcm
Data Filename :C:\Users\DELL\Desktop\3323\ZK16437-007-1.lcd

PDA Chromatogram



MS Chromatogram



PDA Peak Table

PDA Ch2 214nm

Peak	Ret. Time(min)	Area	Height	Area%	USP	Tailing Factor
1	1.7009	18606.3	16573	0.30	27786	1.174
2	2.1022	6097109.2	2627572	98.15	18684	1.383
3	2.5707	96146.8	43736	1.55	28230	1.350
Total		6211862.4	2687881	100.00		

MS Peak Table TIC

Peak	Ret. Time(min)	m/z	Area	A/H
1	2.0905	TIC	3097634.0	4.811
2	2.1042	TIC	2232013.0	7.220
Total			5329647.0	

MS Spectrum

Line#:1 R.Time:----(Scan#:----)

MassPeaks:634

Spectrum Mode:Averaged 0.950-0.983(115-119) Base Pea

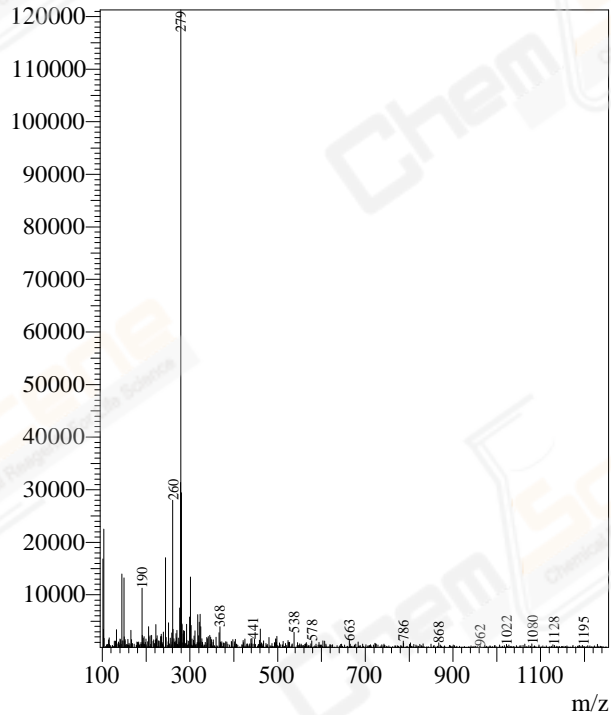
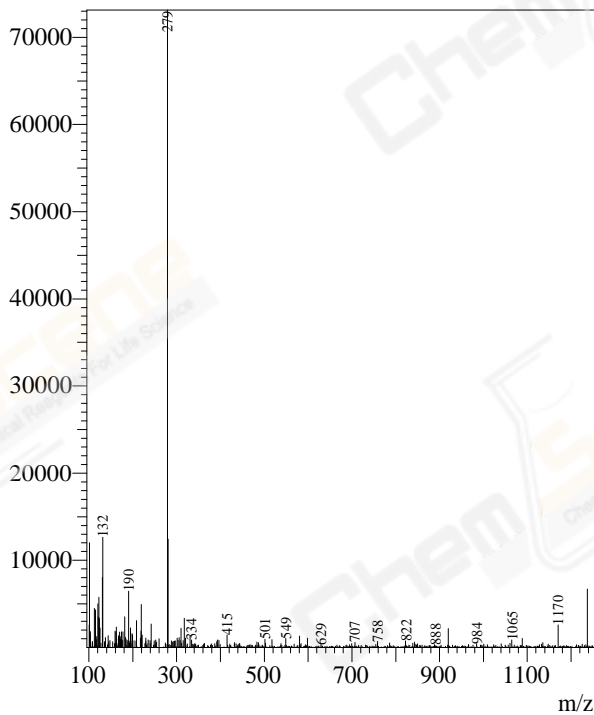
BG Mode:Calc Segment 1 - Event 1

Line#:2 R.Time:----(Scan#:----)

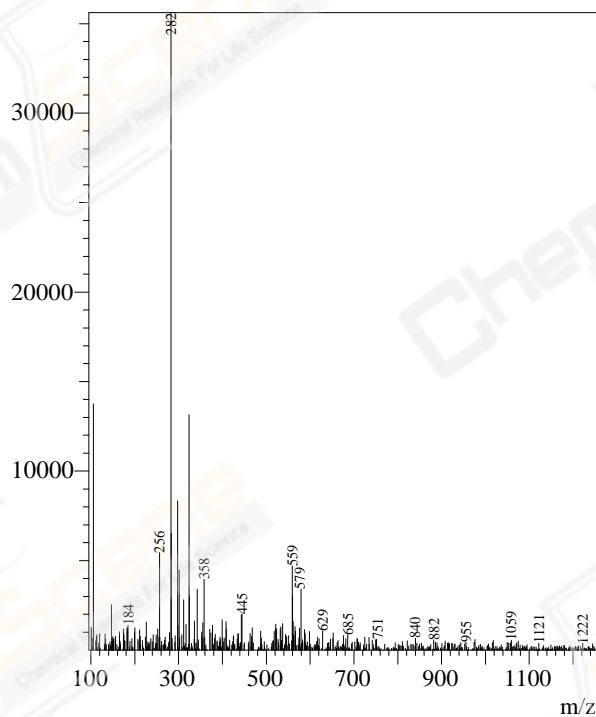
MassPeaks:669

Spectrum Mode:Averaged 2.067-2.100(249-253) Base Pea

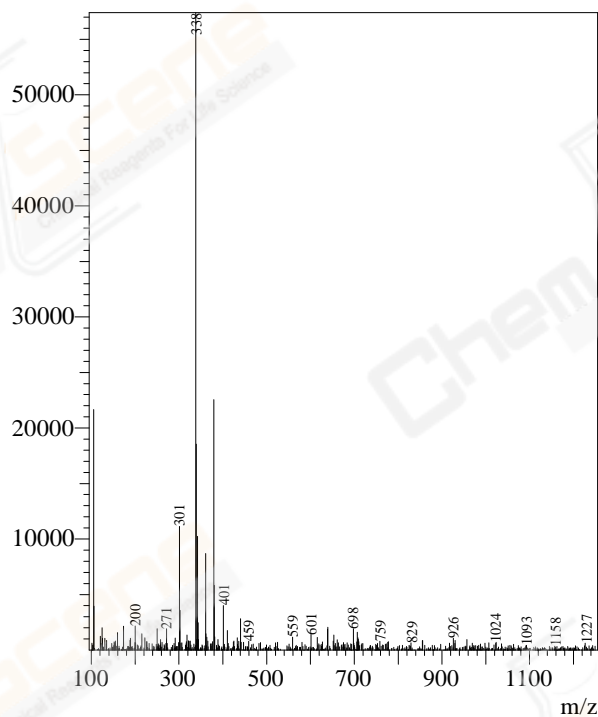
BG Mode:Calc Segment 1 - Event 1



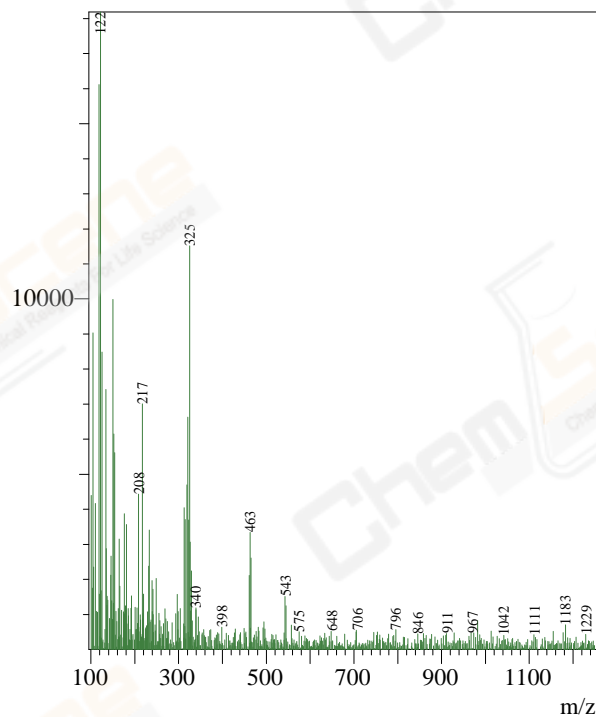
Line#:3 R.Time:----(Scan#:----)
MassPeaks:602
Spectrum Mode:Averaged 2.317-2.350(279-283) Base Pea
BG Mode:Calc Segment 1 - Event 1



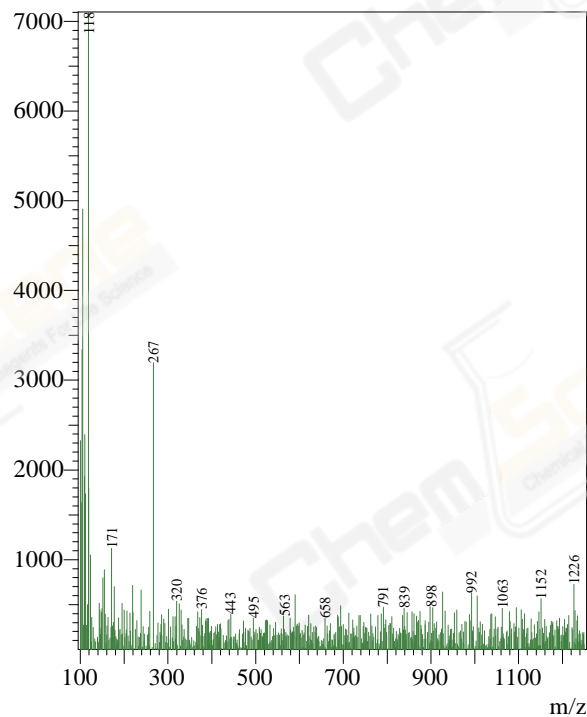
Line#:4 R.Time:----(Scan#:----)
MassPeaks:601
Spectrum Mode:Averaged 3.000-3.033(361-365) Base Pea
BG Mode:Calc Segment 1 - Event 1



Line#:5 R.Time:----(Scan#:----)
MassPeaks:750
Spectrum Mode:Averaged 2.091-2.125(252-256) BasePea
BG Mode:Calc Segment 1 - Event 2



Line#:6 R.Time:----(Scan#:----)
MassPeaks:708
Spectrum Mode:Averaged 2.375-2.408(286-290) BasePea
BG Mode:Calc Segment 1 - Event 2

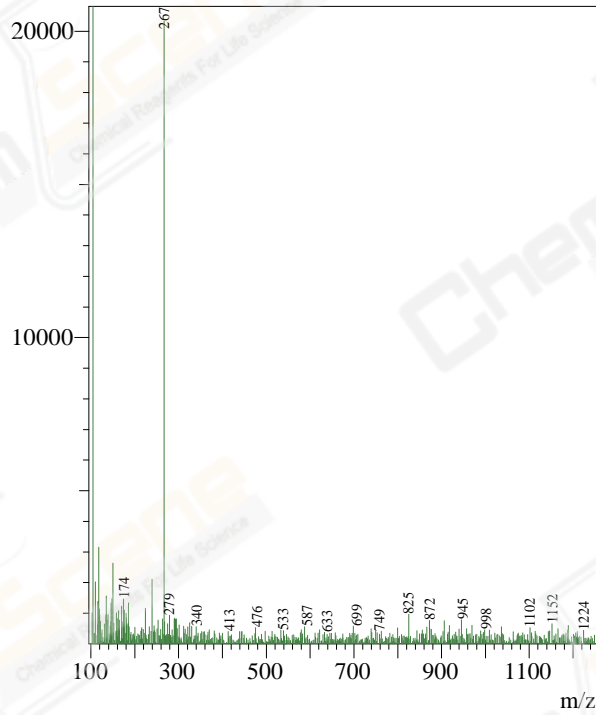


Line#:7 R.Time:----(Scan#:----)

MassPeaks:701

Spectrum Mode:Averaged 2.541-2.575(306-310) Base Pea

BG Mode:Calc Segment 1 - Event 2



Line#:8 R.Time:----(Scan#:----)

MassPeaks:657

Spectrum Mode:Averaged 2.891-2.925(348-352) Base Pea

BG Mode:Calc Segment 1 - Event 2

