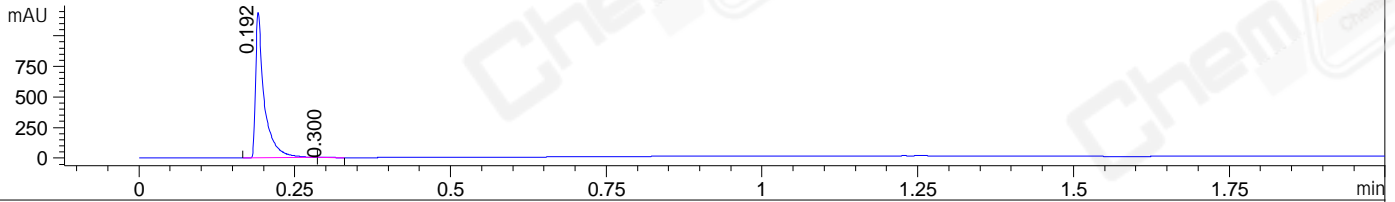
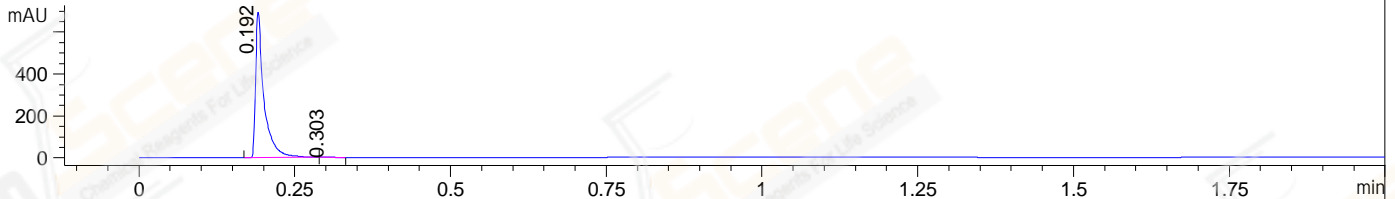


File ..12-05\CPK2022-D05-29075-UPLC-MS-03-045774.D Tgt Mass (EZ):
Injection Date : 05-Dec-22, 14:27:33 Seq. Line : 0
Sample Name : CPK2022-D05-29075 Location : P1-E-03
Acq. Operator : LiYong Inj : 1
Spec. Reported : MS Integration Inj Volume : 0.3 ul
Acq. Method : E:\Chem32\1-Methods\1-POS-UPLC2.0MIN(0.8)(150-1000).M
Analysis Method : E:\CHEM32\1\METHODS\1-POS-UPLC2.0MIN(0.8)(150-1000).M
CAS NO. : 2353-33-5 WalkUp method: '1-POS-2MIN' Project: BIZ2022
Method Info : Mobile Phase: A: water(0.01%TFA) B:ACN(0.01%TFA)
Gradient: 5% to 95%B within 1.3 min
Flow Rate : 0.8ml/min
Column :Poroshell 120 EC- C18, 2.1*50mm,1.9um
Oven Temperature : 45C

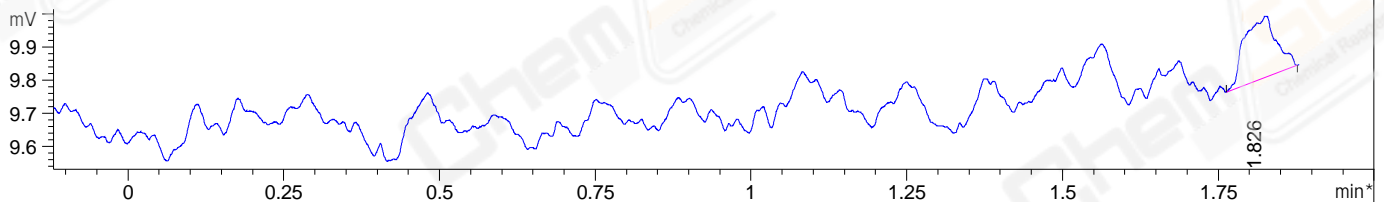
DAD1 A, Sig=214,4 Ref=off



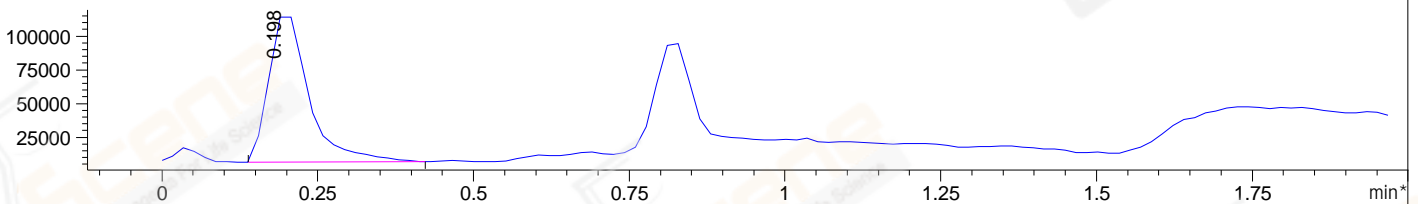
DAD1 B, Sig=254,4 Ref=off



*ELS1 A, ELSD Signal



*MSD1 TIC, MS File ES-API, Pos, Scan, Frag: 70



Integration Results for DAD1 A, Sig=214,4 Ref=off

| RetTim | Width | Area | Height | Area% | MS(+) |
|--------|-------|---------|---------|-------|-------|
| 0.19 | 0.01 | 1152.09 | 1176.93 | 99.74 | 457 |
| 0.30 | 0.02 | 3.03 | 2.03 | 0.26 | 457 |

Integration Results for DAD1 B, Sig=254,4 Ref=off

| RetTim | Width | Area | Height | Area% | MS(+) |
|--------|-------|--------|--------|-------|-------|
| 0.19 | 0.01 | 649.68 | 686.92 | 99.76 | 457 |
| 0.30 | 0.02 | 1.57 | 1.06 | 0.24 | 457 |

Integration Results for ELS1 A, ELSD Signal

| RetTim | Width | Area | Height | Area% | MS(+) |
|--------|-------|------|--------|--------|-------|
| 1.83 | 0.05 | 0.68 | 0.19 | 100.00 | 159 |

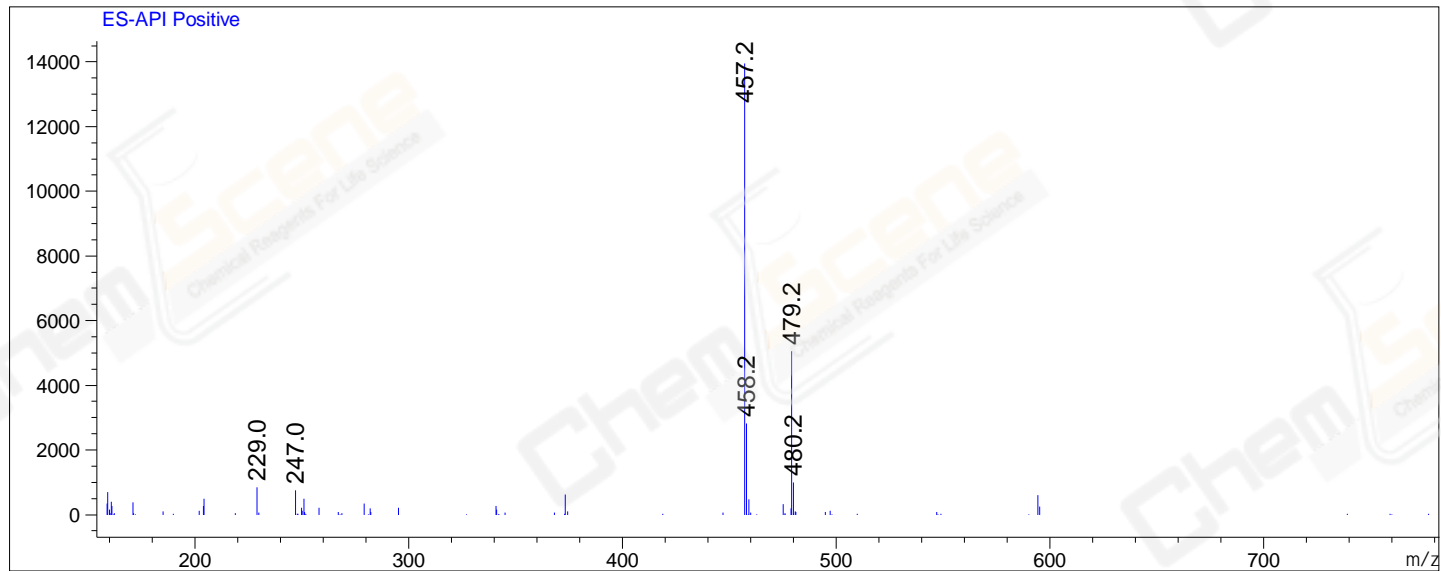
Integration Results for MSD1 TIC, MS File

0.20 0.07 486844.94 113175.37 100.00 457

| RetTim | Width | Area | Height | Area% | MS(+) |
|--------|-------|-----------|-----------|--------|-------|
| 0.20 | 0.07 | 486844.94 | 113175.37 | 100.00 | 457 |

Ret. Time: 0.20

<<<< POSITIVE SPECTRA >>>>



*** End of Report ***