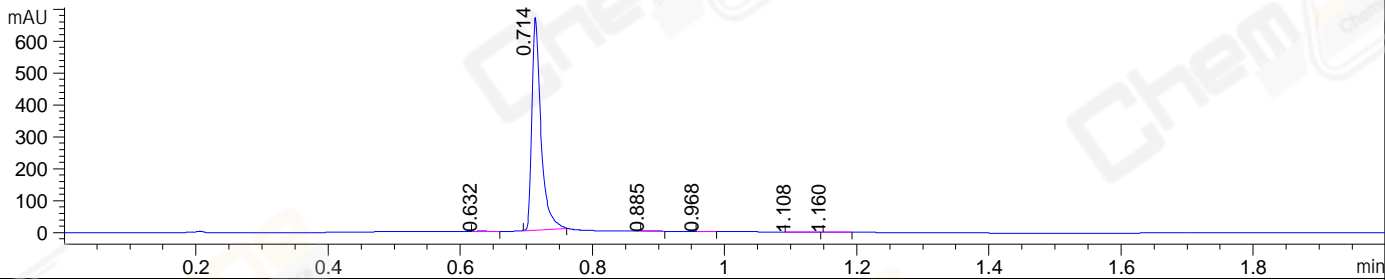
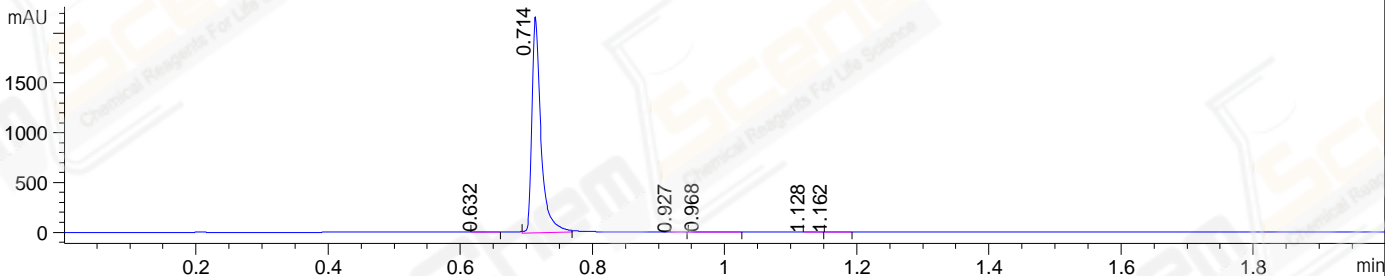


File ..03-31\BIZ2023-331-WLQ32-UPLC-MS-01-014665.D Tgt Mass (EZX):
 Injection Date : 31 Mar 23 5:20 pm +0800 Seq. Line : 0
 Sample Name : BIZ2023-331-WLQ32 Location : P2-F-02
 Acq. Operator : LY_2278 Inj : 1
 Spec. Reported : MS Integration Inj Volume : 0.5 ul
 Acq. Method : D:\LCMS\Methods\1-POS-UPLC2.0MIN(0.8ML)-(0-2000).M
 Analysis Method : D:\LCMS\METHODS\1-POS-UPLC2.0MIN(0.8ML)-(0-2000).M
 CAS NO. : 582-24-1 Walkup method: '1-POS-2MIN(0-2000)' Project: BIZ2023 Target:
 Method Info : Mobile Phase: A: water(0.01%TFA) B:ACN(0.01%TFA)
 Gradient: 5% to 95%B within 0.6 min
 Flow Rate :0.8ml/min
 Column :Poroshell 120 EC- C18, 2.1*50mm,1.9um A-RP-517
 Oven Temperature : 45C

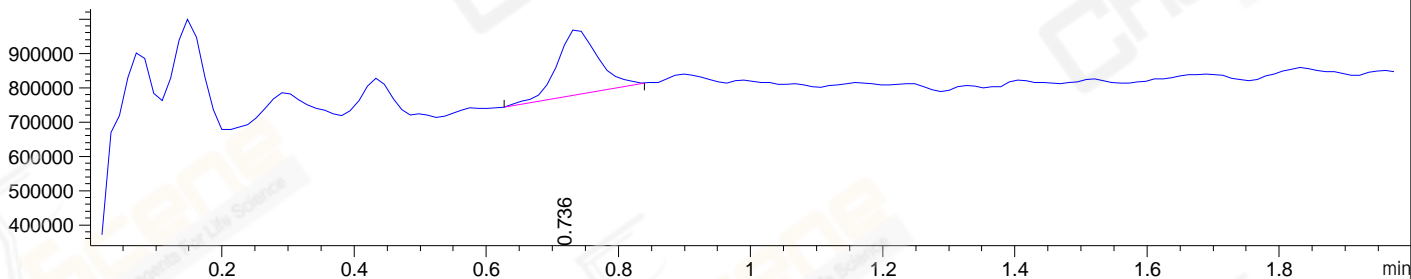
DAD1 A, Sig=214,4 Ref=off



DAD1 B, Sig=254,4 Ref=off



MSD1 TIC, MS File ES-API, Pos, Scan, Frag: 70



Integration Results for DAD1 A, Sig=214,4 Ref=off

| RetTim | Width | Area | Height | Area% | MS(+) |
|--------|-------|--------|--------|-------|-------|
| 0.63 | 0.01 | 0.75 | 0.80 | 0.12 | 137 |
| 0.71 | 0.02 | 641.08 | 668.16 | 99.54 | 102 |
| 0.89 | 0.01 | 1.00 | 1.35 | 0.16 | 102 |
| 0.97 | 0.01 | 0.45 | 0.62 | 0.07 | 102 |
| 1.11 | 0.01 | 0.39 | 0.41 | 0.06 | 102 |
| 1.16 | 0.01 | 0.39 | 0.47 | 0.06 | 102 |

Integration Results for DAD1 B, Sig=254,4 Ref=off

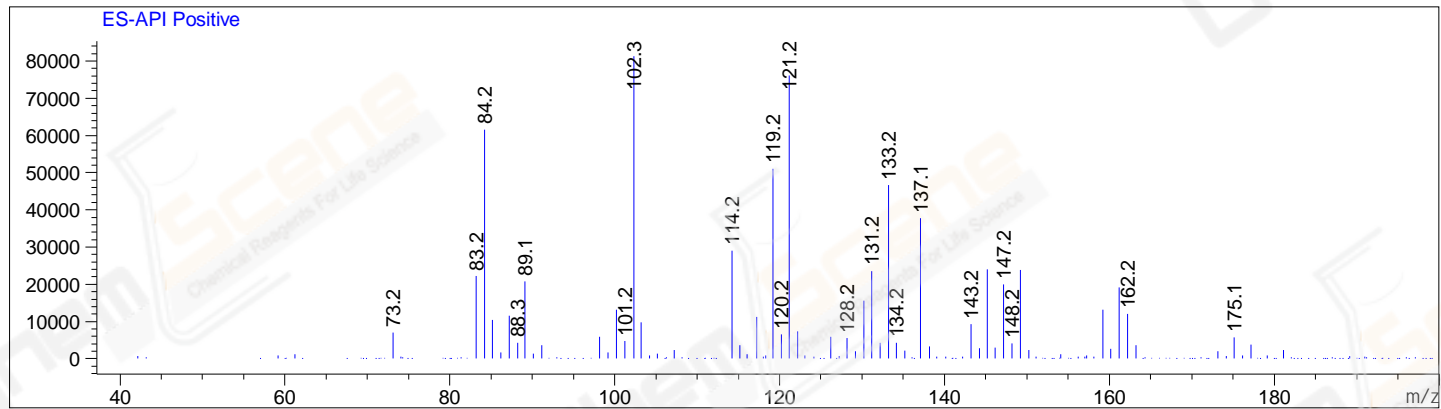
| RetTim | Width | Area | Height | Area% | MS(+) |
|--------|-------|---------|---------|-------|-------|
| 0.63 | 0.01 | 2.24 | 2.34 | 0.11 | 137 |
| 0.71 | 0.02 | 2095.36 | 2180.92 | 99.82 | 102 |
| 0.93 | 0.01 | 0.14 | 0.19 | 0.01 | 102 |
| 0.97 | 0.01 | 1.22 | 1.28 | 0.06 | 102 |
| 1.13 | 0.01 | 0.04 | 0.05 | 0.00 | 102 |
| 1.16 | 0.01 | 0.23 | 0.25 | 0.01 | 102 |

Integration Results for MSD1 TIC, MS File

| RetTim | Width | Area | Height | Area% | MS(+) |
|--------|-------|-----------|-----------|--------|-------|
| 0.74 | 0.06 | 813573.31 | 192299.83 | 100.00 | 102 |

Ret. Time: 0.74

<<<< POSITIVE SPECTRA >>>>



*** End of Report ***