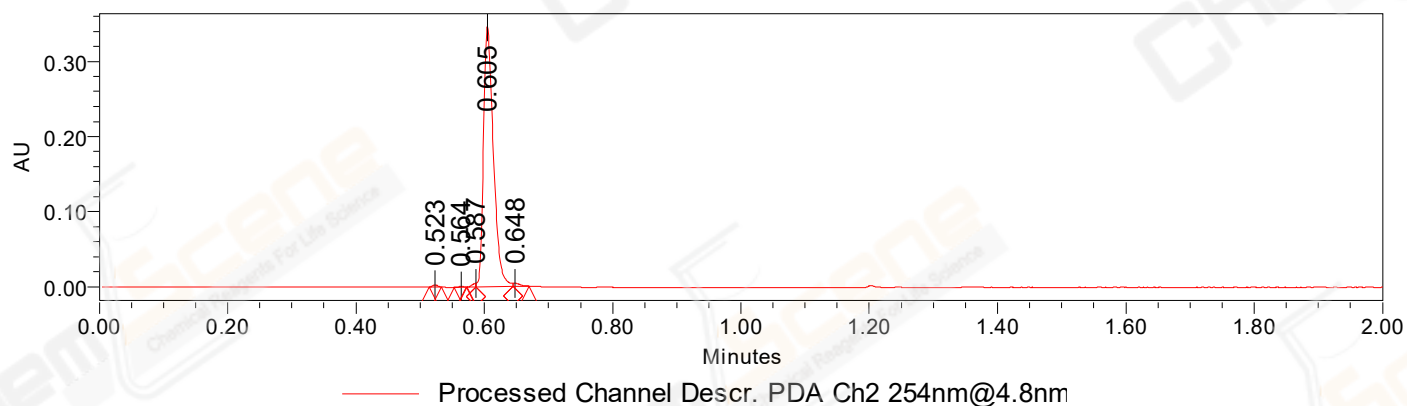


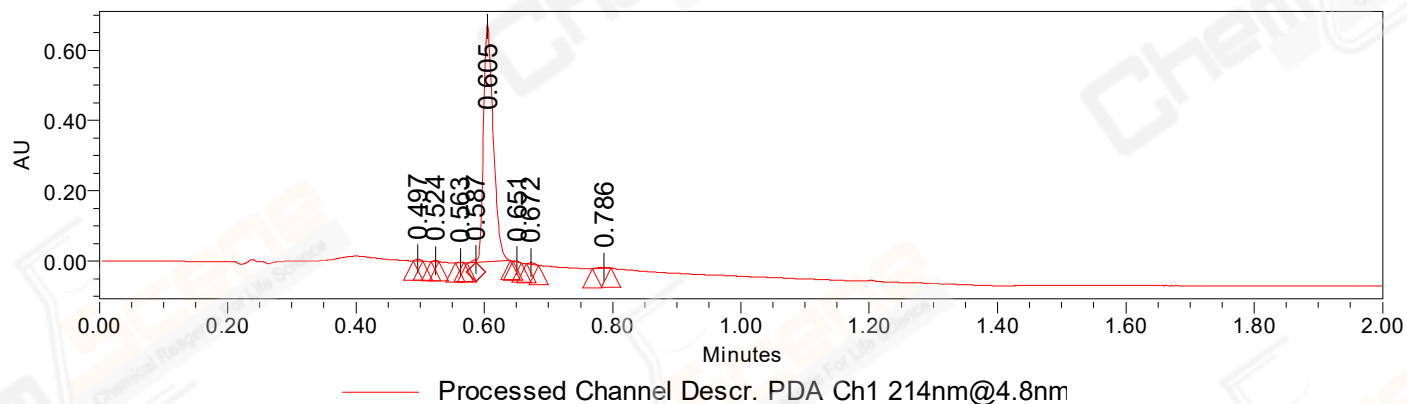
SAMPLE INFORMATION

Sample Name:	BIZ2022-D12-SCH6	Acquired By:	LY
CAS NO.:	1948273-03-7	Date Acquired:	12/13/2022 5:23:27 PM CST
Vial:	2:A,2	Acq. Method Set:	1_POS_2MIN
Injection #:	1	Date Processed:	12/13/2022 5:27:51 PM CST,
Injection Volume:	0.30 ul	Processing Method:	PDA_01, MS_scan
Run Time:	2.8 Minutes	Channel Name:	PDA Ch1 214nm@4.8nm, MS TIC,
Sample Set Name:	20221213	Column Name:	A-RP-985

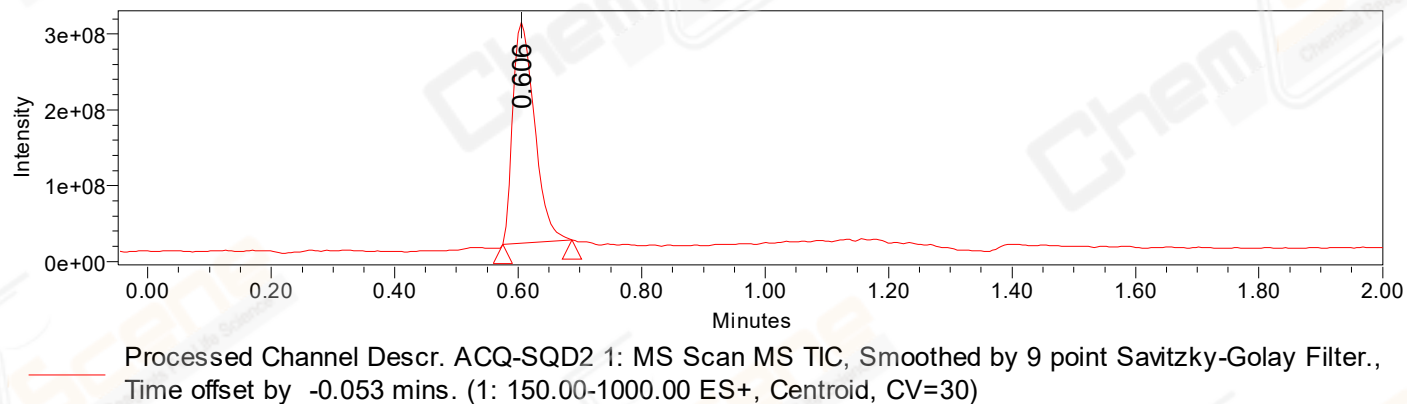
Auto-Scaled Chromatogram



Auto-Scaled Chromatogram



Auto-Scaled Chromatogram



Peak Results
Channel Name: PDA Ch2 254nm@4.8nm

	RT	Width (sec)	Area	Height	% Area	Base Peak (Combined) (m/z)	Channel Name
1	0.523	1.150	1795	3154	0.47	151.08	PDA Ch2 254nm@4.8nm
2	0.564	1.150	647	1126	0.17	203.21	PDA Ch2 254nm@4.8nm
3	0.587	0.800	1827	4988	0.48	202.00	PDA Ch2 254nm@4.8nm
4	0.605	3.500	371042	346330	98.16	151.00	PDA Ch2 254nm@4.8nm
5	0.648	1.450	2686	3788	0.71	223.12	PDA Ch2 254nm@4.8nm

Peak Results
Channel Name: PDA Ch1 214nm@4.8nm

	RT	Width (sec)	Area	Height	% Area	Base Peak (Combined) (m/z)	Channel Name
1	0.497	0.900	2350	4979	0.32	225.16	PDA Ch1 214nm@4.8nm
2	0.524	0.750	1346	3142	0.19	258.85	PDA Ch1 214nm@4.8nm
3	0.563	0.750	433	990	0.06	216.85	PDA Ch1 214nm@4.8nm
4	0.587	0.800	3160	8568	0.43	202.00	PDA Ch1 214nm@4.8nm
5	0.605	3.250	712922	674915	98.03	150.99	PDA Ch1 214nm@4.8nm
6	0.651	0.750	1148	2634	0.16	223.12	PDA Ch1 214nm@4.8nm
7	0.672	1.150	2764	4552	0.38	223.08	PDA Ch1 214nm@4.8nm
8	0.786	1.750	3121	3044	0.43	223.12	PDA Ch1 214nm@4.8nm

Peak Results
Channel Name: MS TIC

	RT	Width (sec)	Area	Height	% Area	Base Peak (Combined) (m/z)	Channel Name
1	0.606	6.674	709796800	291450436	100.00	223.11	MS TIC

Match Plot

