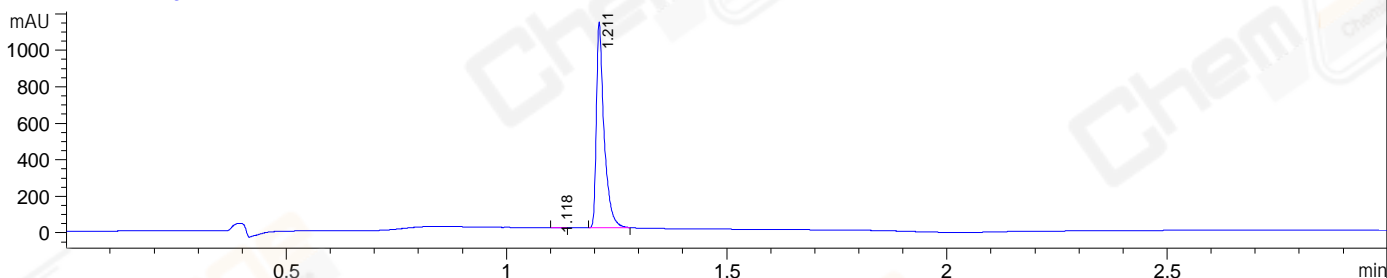
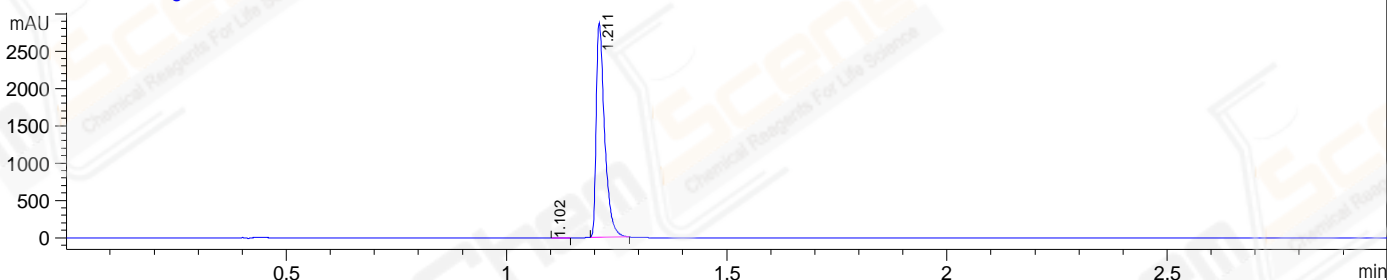


File E:\ChemStation\1\DATA\2023\2023-05\2023-05-28\BIZ2023-526-SCH31-LCMS-20-004841.D  
 Injection Date : 28-May-23, 12:18:26 Tgt Mass(EZX) :  
 Sample Name : BIZ2023-526-SCH31 Location : P1-B-07  
 Acq. Operator : LY\_2278 Inj : 1  
 Spec. Reported : MS Integration Inj Volume : 3 ul  
 Acq. Method : E:\ChemStation\1\Methods\1-POS-3MIN(1.8ML)-(0-2000).M  
 Analysis Method : E:\CHEMSTATION\1\METHODS\1-POS-3MIN(1.8ML)-(0-2000).M  
 CAS NO. : 582-24-1 WalkUp method: '1-POS-3MIN(0-2000)' Project: BIZ2023  
 Method Info : Mobile Phase: A: water(0.01%FA) B:ACN(0.01%FA)  
 Flow Rate :1.8ml/min  
 Column :SunFire C18, 4.6\*50mm,3.5um  
 Oven Temperature : 45C

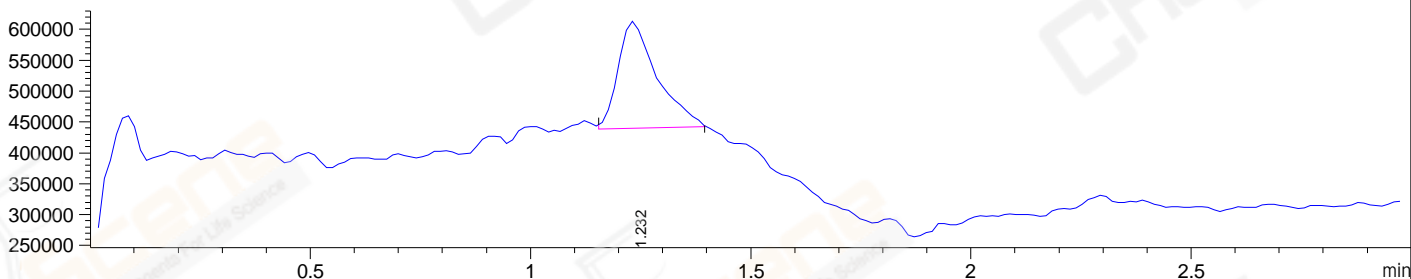
DAD1 A, Sig=214,4 Ref=off



DAD1 B, Sig=254,4 Ref=off



MSD1 TIC, MS File ES-API, Pos, Scan, Frag: 70



Integration Results for DAD1 A, Sig=214,4 Ref=off

RetTim	Width	Area	Height	Area%
1.12	0.02	1.48	1.48	0.11
1.21	0.02	1370.60	1127.97	99.89

Integration Results for DAD1 B, Sig=254,4 Ref=off

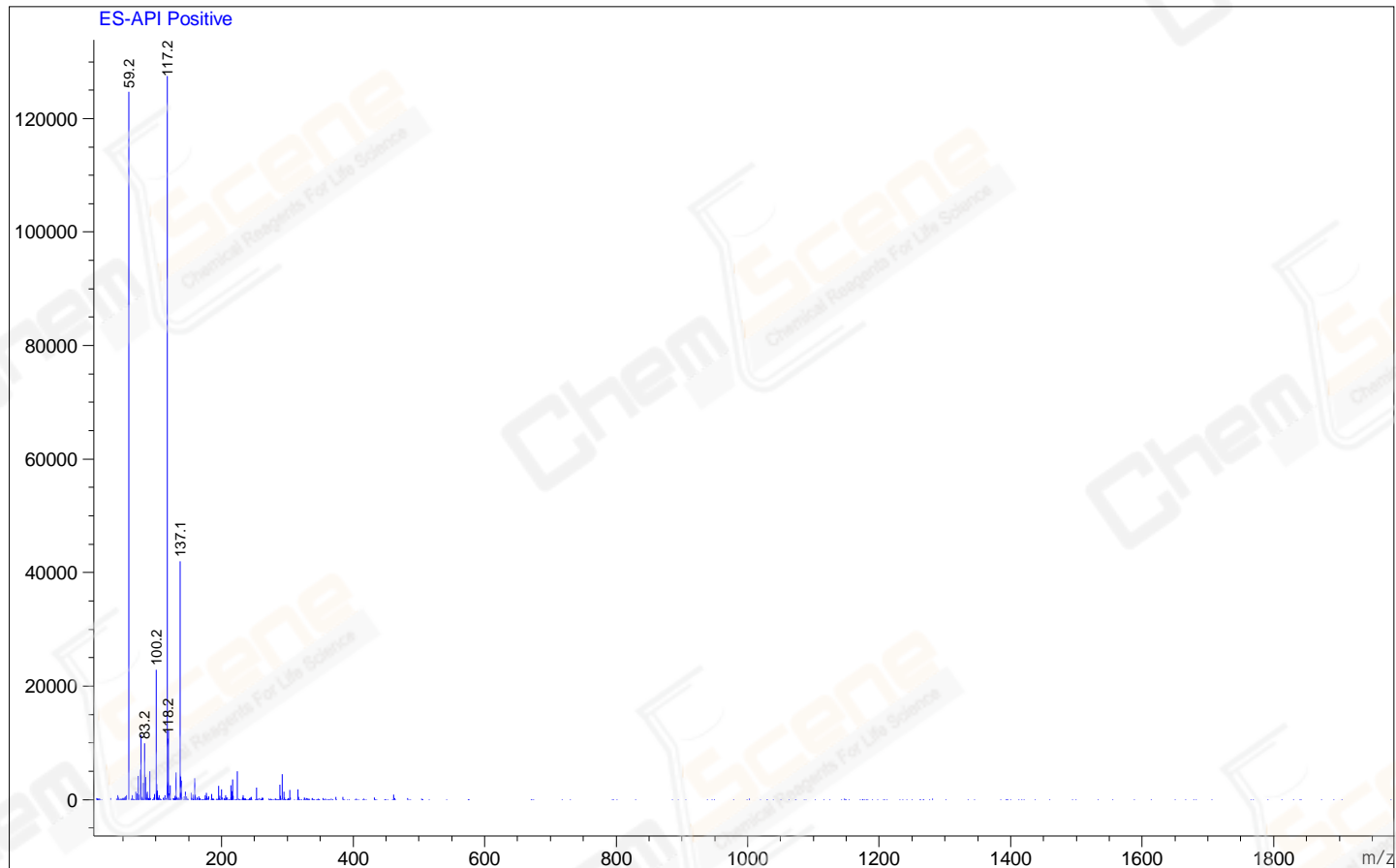
RetTim	Width	Area	Height	Area%
1.10	0.02	3.47	0.06	0.09
1.21	0.02	3819.97	2867.66	99.91

Integration Results for MSD1 TIC, MS File

RetTim	Width	Area	Height	Area%
1.23	0.10	1059317.25	174217.25	100.00

Ret. Time: 1.23

<<<< POSITIVE SPECTRA >>>>



\*\*\* End of Report \*\*\*