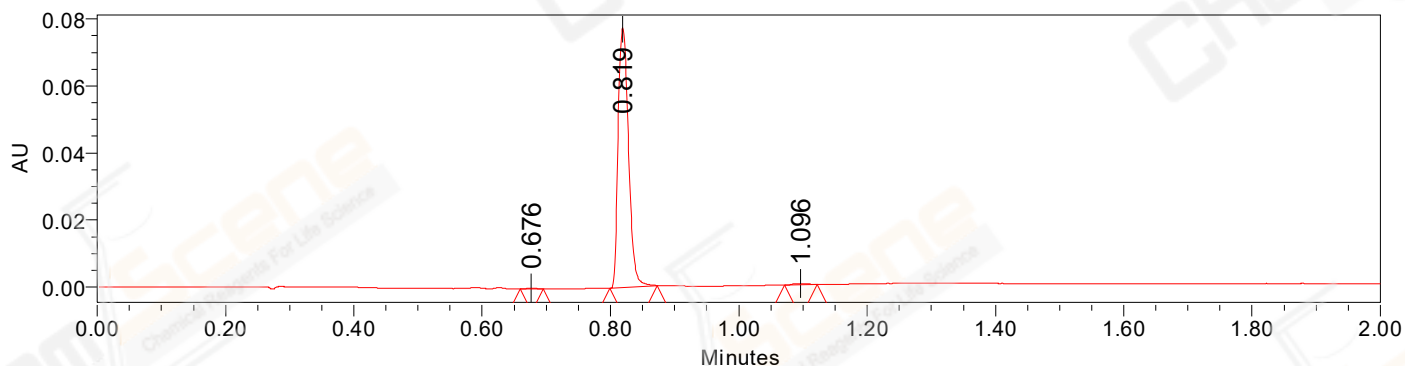


## SAMPLE INFORMATION

CAS NO.: 94105-90-5  
Sample information:  
Vial: 1:B,2  
Injection #: 1  
Injection Volume: 0.50 ul  
Run Time: 2.8 Minutes  
Sample Set Name: 20220507

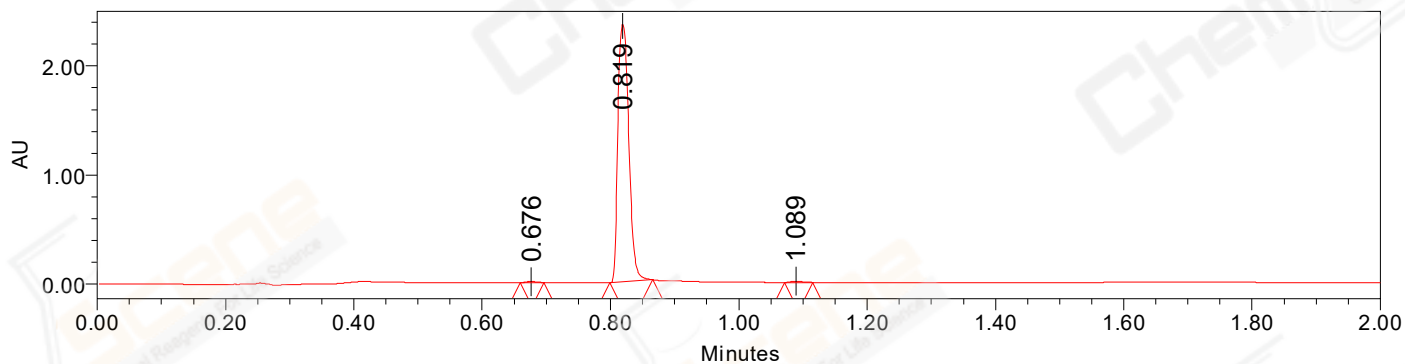
Acquired By: LY  
Date Acquired: 5/7/2022 7:34:25 PM CST  
Acq. Method Set: 1\_POS\_2MIN  
Date Processed: 5/8/2022 10:00:13 AM CST,  
Processing Method: PDA\_01, MS\_scan  
Channel Name: PDA Ch1 214nm@4.8nm, MS TIC,  
Column Name: A-RP-929

### Auto-Scaled Chromatogram



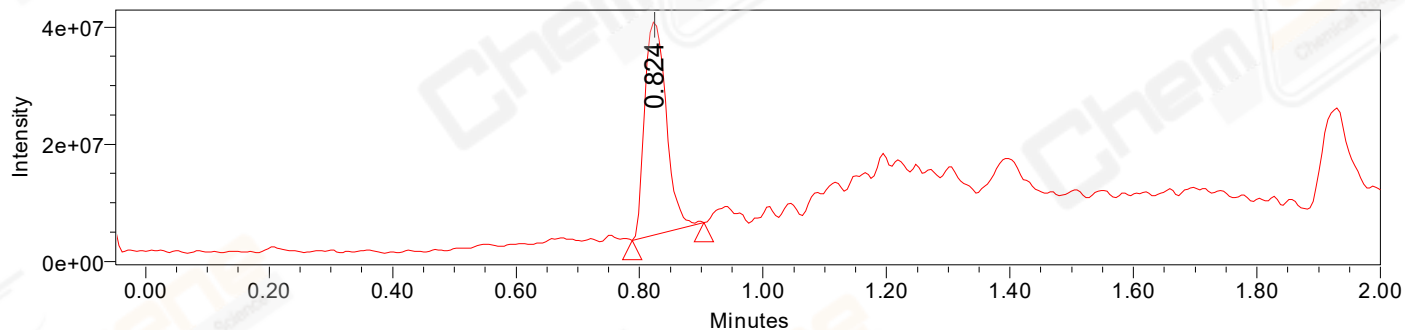
Processed Channel Descr. PDA Ch2 254nm@4.8nm

### Auto-Scaled Chromatogram



Processed Channel Descr. PDA Ch1 214nm@4.8nm

### Auto-Scaled Chromatogram



Processed Channel Descr. ACQ-SQD2 1: MS Scan MS TIC, Smoothed by 9 point Savitzky-Golay Filter., Time offset by -0.053 mins. (1: 150.00-1000.00 ES+, Centroid, CV=30)

Peak Results  
Channel Name: PDA Ch2 254nm@4.8nm

	RT	Width (sec)	Area	Height	% Area	Base Peak (Combined) (m/z)	Channel Name
1	0.676	2.150	276	292	0.31	151.26	PDA Ch2 254nm@4.8nm
2	0.819	4.400	87031	77440	99.01	152.05	PDA Ch2 254nm@4.8nm
3	1.096	3.050	593	363	0.67	154.18	PDA Ch2 254nm@4.8nm

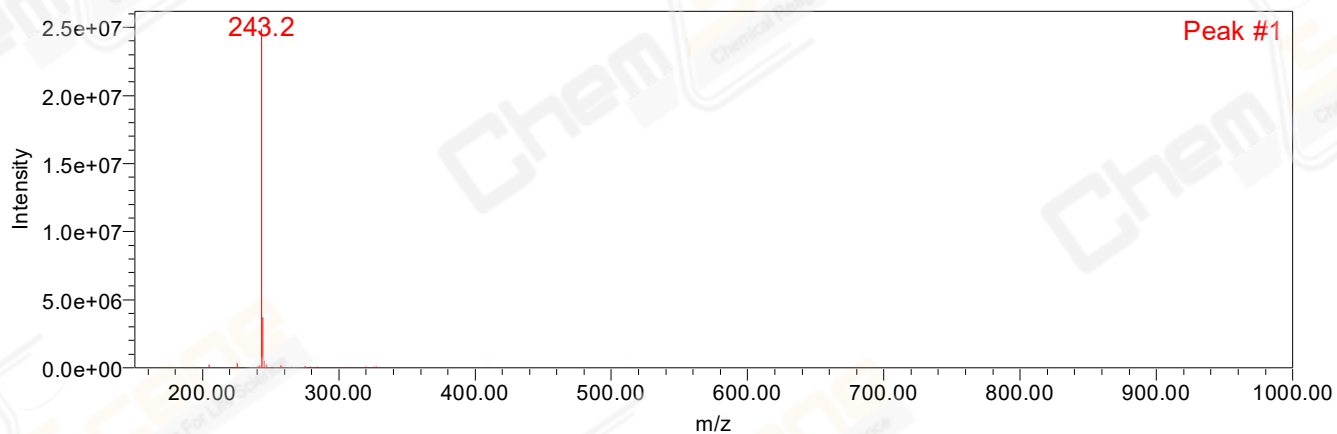
Peak Results  
Channel Name: PDA Ch1 214nm@4.8nm

	RT	Width (sec)	Area	Height	% Area	Base Peak (Combined) (m/z)	Channel Name
1	0.676	2.200	8438	8659	0.30	151.26	PDA Ch1 214nm@4.8nm
2	0.819	4.000	2778018	2359989	99.25	152.01	PDA Ch1 214nm@4.8nm
3	1.089	2.650	12477	10578	0.45	152.11	PDA Ch1 214nm@4.8nm

Peak Results  
Channel Name: MS TIC

	RT	Width (sec)	Area	Height	% Area	Base Peak (Combined) (m/z)	Channel Name
1	0.824	6.963	88329166	36537228	100.00	243.15	MS TIC

Match Plot



Retention Time 0.824 Channel Name MS TIC