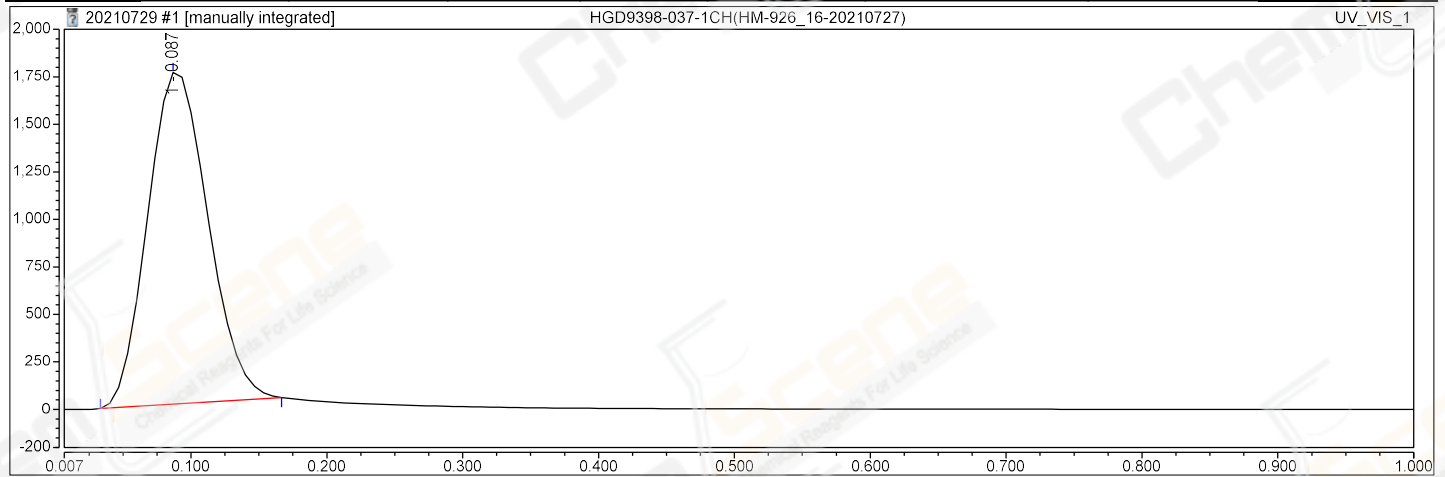


Chromatogram and Results

Product Name:	Mifamurtide (TFA)	Channel:	UV_VIS_1
Vial Number:	R:F5	Wavelength:	210
Injection Type:	Unknown	Injection Volume:	15.00
Instrument:	QE-01	Injection Time:	29/Jul/2021 13:10
Instrument Method:	QE-(100-1500)(Bypass)	InstMeth.creation_time:	09/Apr/2021 16:32
Processing Method:	MS Quantitative	Seq.update_operator:	WangZhuHai
Seq.creation_operator:	WangZhuHai	Data Operator:	WangZhuHai
InstMeth.creation_operator:	WangZhuHai		
Comment:	Bypass		

Path: chrom://thermo-hs/HYDATARP/1RD/QE-01/Sequences/20210729.seq/364.smp/UV_VIS_1.channel/UV_VIS_1.chm

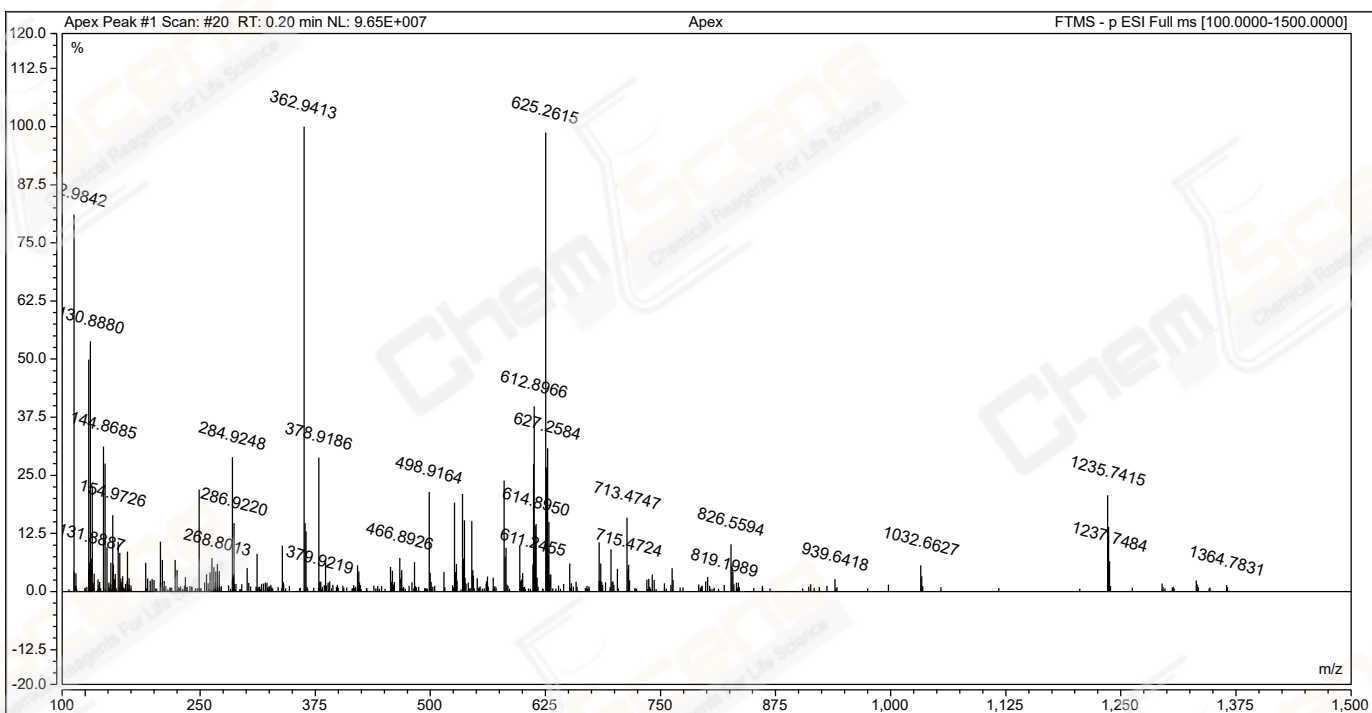
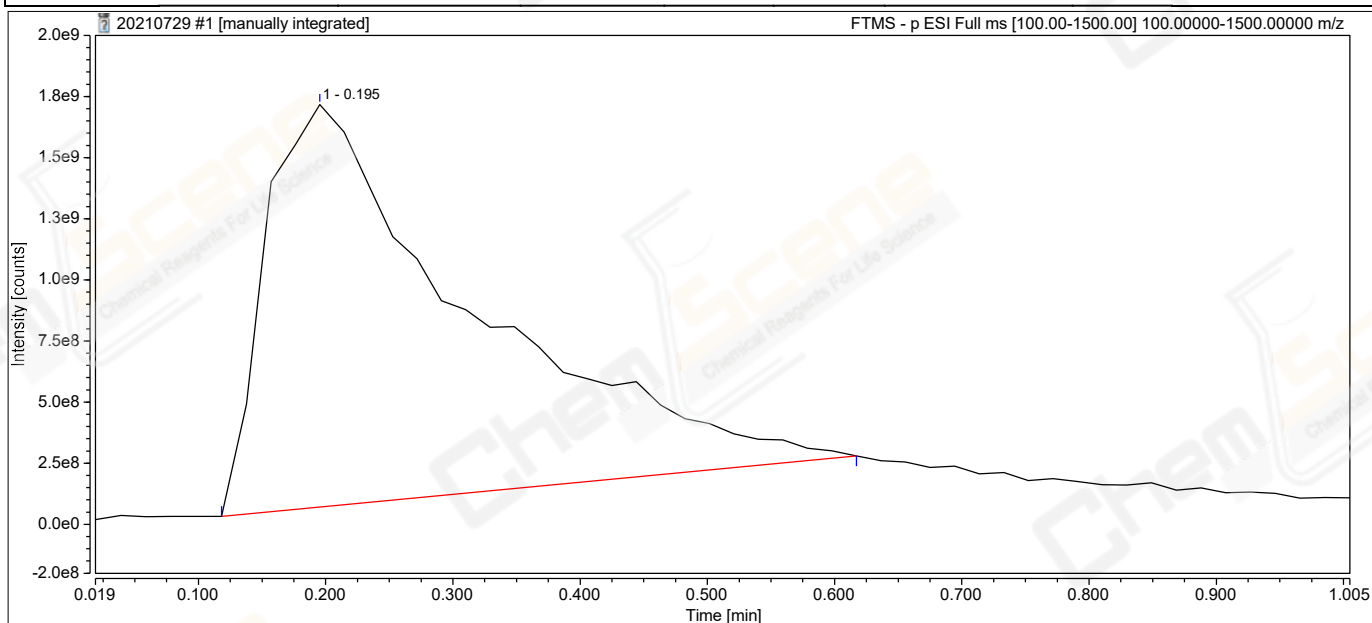


No.	Peak Name	Retention Time min	Area mAU*min	Height mAU	Relative Area %	Resolution (USP)	Asymmetry (EP)	Plates (USP)
1		0.087	89.854	1745.195	100.00	n.a.	1.20	18
Total:			89.854	1745.195	100.00	0.00		

Chromatogram and Results

Product Name:	Mifamurtide (TFA)	Channel:	n.a.
Vial Number:	R:F5	Wavelength:	210
Injection Type:	Unknown	Injection Volume:	15.00
Instrument:	QE-01	Injection Time:	29/Jul/2021 13:10
Instrument Method:	QE-(100-1500)(Bypass)	InstMeth.creation_time:	09/Apr/2021 16:32
Processing Method:	MS Quantitative	Seq.update_operator:	WangZhuHai
Seq.creation_operator:	WangZhuHai	Data Operator:	WangZhuHai
InstMeth.creation_operator:	WangZhuHai		
Comment:	Bypass		

Path: chrom://thermo-hs/HYDATARP/1RD/QE-01/Sequences/20210729.seq/364.smp/FTMS - p ESI Full ms [100.00-1500.00].channel/FTMS - p ESI Full ms [100.00-1500.00].chm



Default MS Report/Peak Analysis

Mass	Intensity	Relative Intensity
m/z	counts	%
112.9842	78257736	81.09%
128.8908	48178300	49.92%
130.8880	51922320	53.80%
132.8851	21915080	22.71%
144.8685	30050664	31.14%
146.8655	26559560	27.52%
154.9726	15884231	16.46%
160.8409	10377116	10.75%
206.9078	10357032	10.73%
248.9604	21209482	21.98%
284.9248	27857112	28.87%
286.9220	14194118	14.71%
362.9413	96504968	100.00%
363.9430	14175921	14.69%
364.9378	12499930	12.95%
378.9186	27810550	28.82%
498.9164	20680796	21.43%
526.1928	18472020	19.14%
534.8803	20252280	20.99%
536.8777	14777209	15.31%
544.9091	14580688	15.11%
580.2037	23041514	23.88%
612.2296	26465326	27.42%
612.8966	38418456	39.81%
613.8983	13692977	14.19%
614.8950	14030333	14.54%
625.2615	95316056	98.77%
626.2646	25750148	26.68%
627.2584	29764038	30.84%
628.8745	14480866	15.01%
683.2206	10233933	10.60%
713.4747	15337508	15.89%
826.5594	9818657	10.17%
1235.7415	20012922	20.74%
1236.7448	13420455	13.91%