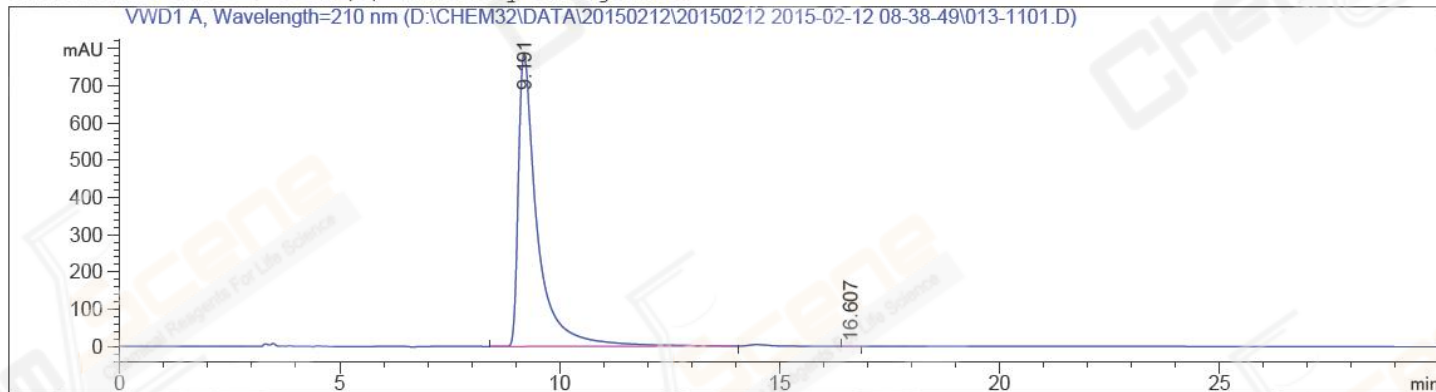


=====
Acq. Operator : GTT(HPLC-09) Seq. Line : 11
Acq. Instrument : Instrument 1 Location : Vial 13
Injection Date : 2/12/2015 12:19:43 PM Inj : 1
Inj Volume : 5.000 µl
Different Inj Volume from Sequence Actual Inj Volume : 4.000 µl
Acq. Method : D:\CHEM32\DATA\20150212\20150212 2015-02-12 08-38-49\AD,85-ETOH,210NM,C2.M
Last changed : 2/12/2015 11:15:38 AM by GTT(HPLC-09)
(modified after loading)
Analysis Method : D:\CHEM32\METHODS\AD,85-ETOH,210NM,C2.M
Last changed : 2/12/2015 12:53:31 PM by GTT(HPLC-09)
(modified after loading)
Catalog No : CS-2514 Batch#15078
C-NP-18
=====

Additional Info : Peak(s) manually integrated



=====
Area Percent Report
=====

Sorted By : Signal
Multiplier: : 1.0000
Dilution: : 1.0000
Use Multiplier & Dilution Factor with ISTDs

Signal 1: VWD1 A, Wavelength=210 nm

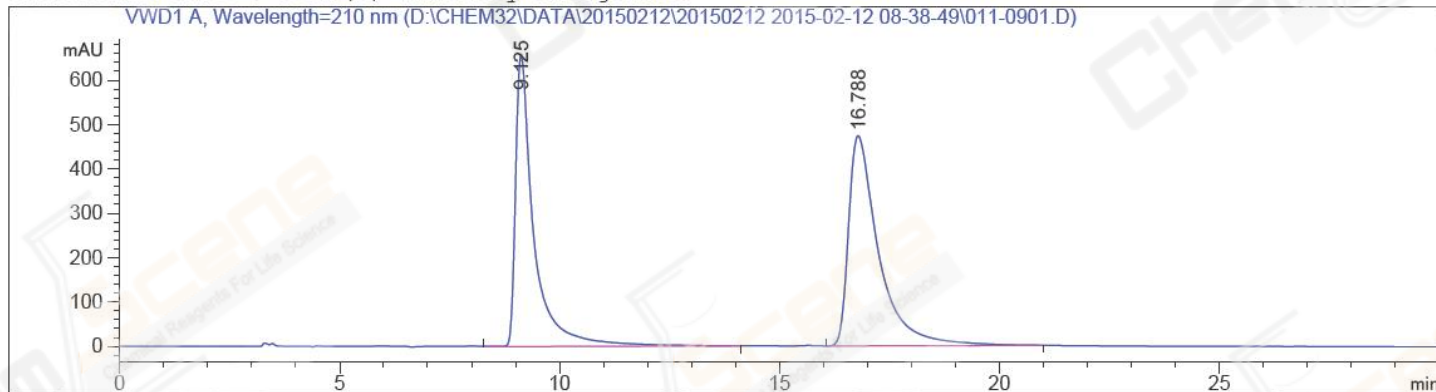
Peak #	RetTime [min]	Type	Width [min]	Area [mAU*s]	Height [mAU]	Area %
1	9.191	BB	0.4311	2.35398e4	784.44391	99.9958
2	16.607	MM R	12.5128	9.84180e-1	6.24598e-2	4.181e-3

Totals : 2.35408e4 784.50637

=====
*** End of Report ***
=====

=====
Acq. Operator : GTT(HPLC-09) Seq. Line : 9
Acq. Instrument : Instrument 1 Location : Vial 11
Injection Date : 2/12/2015 11:16:49 AM Inj : 1
Inj Volume : 5.000 µl
Different Inj Volume from Sequence Actual Inj Volume : 3.000 µl
Acq. Method : D:\CHEM32\DATA\20150212\20150212 2015-02-12 08-38-49\AD,85-ETOH,210NM,C2.M
Last changed : 2/12/2015 11:15:38 AM by GTT(HPLC-09)
(modified after loading)
Analysis Method : D:\CHEM32\METHODS\AD,85-ETOH,210NM,C2.M
Last changed : 2/12/2015 12:53:31 PM by GTT(HPLC-09)
(modified after loading)
Catalog No : CS-2514 Batch#15078
C-NP-18
=====

Additional Info : Peak(s) manually integrated



=====
Area Percent Report
=====

Sorted By : Signal
Multiplier: : 1.0000
Dilution: : 1.0000
Use Multiplier & Dilution Factor with ISTDs

Signal 1: VWD1 A, Wavelength=210 nm

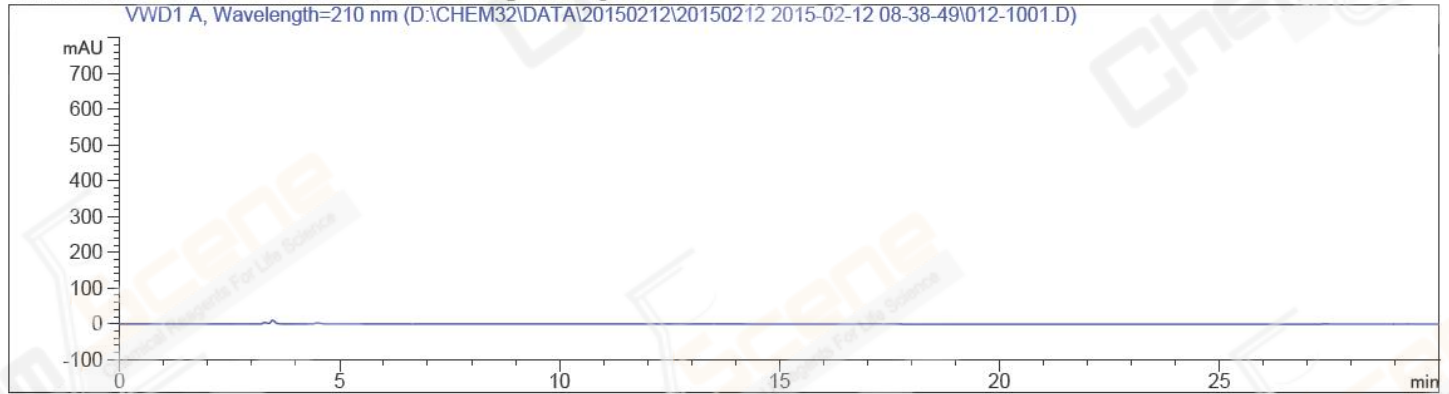
Peak #	RetTime [min]	Type	Width [min]	Area [mAU*s]	Height [mAU]	Area %
1	9.125	VB	0.4157	1.91409e4	659.32562	45.8477
2	16.788	MM R	1.1376	2.26081e4	473.77341	54.1523

Totals : 4.17490e4 1133.09903

=====
*** End of Report ***
=====

```
=====
Acq. Operator   : GTT(HPLC-09)                Seq. Line :   10
Acq. Instrument : Instrument 1                 Location  : Vial 12
Injection Date  : 2/12/2015 11:48:14 AM      Inj       :    1
                                           Inj Volume: 5.000 µl
Different Inj Volume from Sequence          Actual Inj Volume : 4.000 µl
Acq. Method    : D:\CHEM32\DATA\20150212\20150212 2015-02-12 08-38-49\AD,85-ETOH,210NM,C2.M
Last changed   : 2/12/2015 11:15:38 AM by GTT(HPLC-09)
                (modified after loading)
Analysis Method: D:\CHEM32\METHODS\AD,85-ETOH,210NM,C2.M
Last changed   : 2/12/2015 12:55:33 PM by GTT(HPLC-09)
                (modified after loading)
Catalog No    : CS-2514 Batch#15078
                C-NP-18
=====
```

Additional Info : Peak(s) manually integrated



=====
Area Percent Report
=====

```
Sorted By      :      Signal
Multiplier:    :      1.0000
Dilution:      :      1.0000
Use Multiplier & Dilution Factor with ISTDs
```

No peaks found

=====
*** End of Report ***
=====