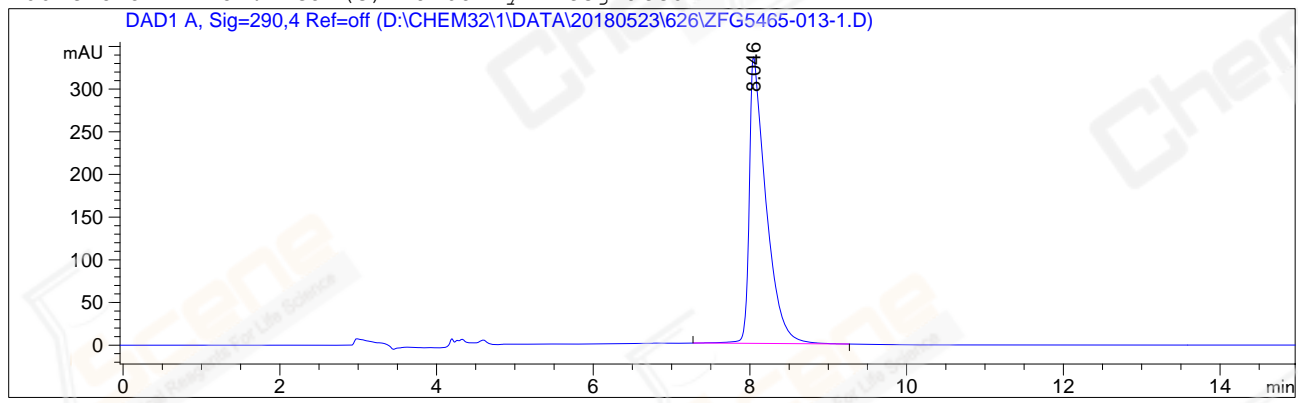


```
=====
Acq. Operator   : LSL                               Seq. Line :    3
Acq. Instrument : HPLC-06                           Location  : Vial 32
Injection Date  : 5/23/2018 10:57:54                 Inj       :    1
                                                    Inj Volume: 15.0 µl
Acq. Method     : D:\CHEM32\1\DATA\20180523\626\HY-325_4A-C19EE,C1.M
Last changed    : 5/23/2018 9:58:21 by LSL
Analysis Method : D:\CHEM32\1\METHODS\NP-HPLC\AD,85A-ETOH,210NM,C1.M
Last changed    : 5/23/2018 11:26:40 by LSL
                (modified after loading)
Catalog No      : CS-M2435 Batch#30930               (by Dichloromethane)
                C-NP-34
=====
```

Additional Info : Peak(s) manually integrated



=====
Area Percent Report
=====

```
Sorted By      :      Signal
Multiplier:    :      1.0000
Dilution:      :      1.0000
Use Multiplier & Dilution Factor with ISTDs
```

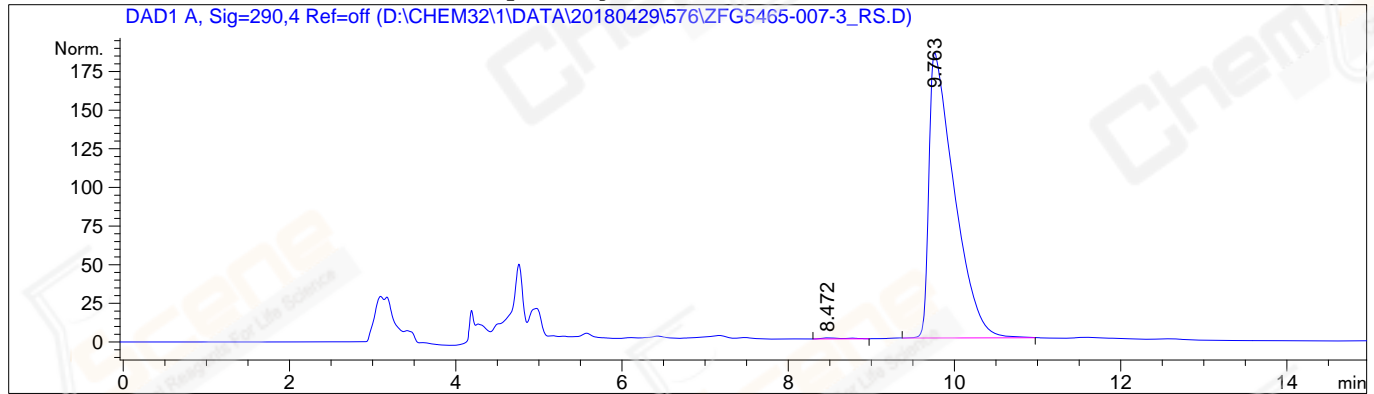
Signal 1: DAD1 A, Sig=290,4 Ref=off

Peak #	RetTime [min]	Type	Width [min]	Area [mAU*s]	Height [mAU]	Area %
1	8.046	MM	0.2469	4975.71094	335.85010	100.0000
Totals :				4975.71094	335.85010	

=====
*** End of Report ***

```
=====
Acq. Operator   : LCY                      Seq. Line :    6
Acq. Instrument : HPLC-06                  Location  : Vial 43
Injection Date  : 4/29/2018 16:50:40      Inj       :    1
                                              Inj Volume: 15.0 µl
Acq. Method     : D:\CHEM32\1\DATA\20180429\576\HY-325_4A-C19EE,C2.M
Last changed    : 4/28/2018 17:32:58 by LCY
Analysis Method : D:\CHEM32\1\METHODS\NP-HPLC\HY-325_4A-C19RS03,C1.M
Last changed    : 5/2/2018 17:11:51 by LCY
                  (modified after loading)
Catalog No      : CS-M2435 Batch#30930
                  C-NP-34
=====
```

Additional Info : Peak(s) manually integrated



=====
Area Percent Report
=====

```
Sorted By      :      Signal
Calib. Data Modified :    5/2/2018 17:10:31
Multiplier:    :      1.0000
Dilution:      :      1.0000
Use Multiplier & Dilution Factor with ISTDs
```

Signal 1: DAD1 A, Sig=290,4 Ref=off

Peak #	RetTime [min]	Type	Width [min]	Area [mAU*s]	Area %	Name
1	8.165		0.0000	0.00000	0.0000	
2	8.472	MM	0.3287	14.19490	0.3624	?
3	9.763	MM	0.3524	3902.49512	99.6376	?

Totals : 3916.69002

2 Warnings or Errors :

Warning : Calibration warnings (see calibration table listing)
Warning : Calibrated compound(s) not found

=====
*** End of Report ***