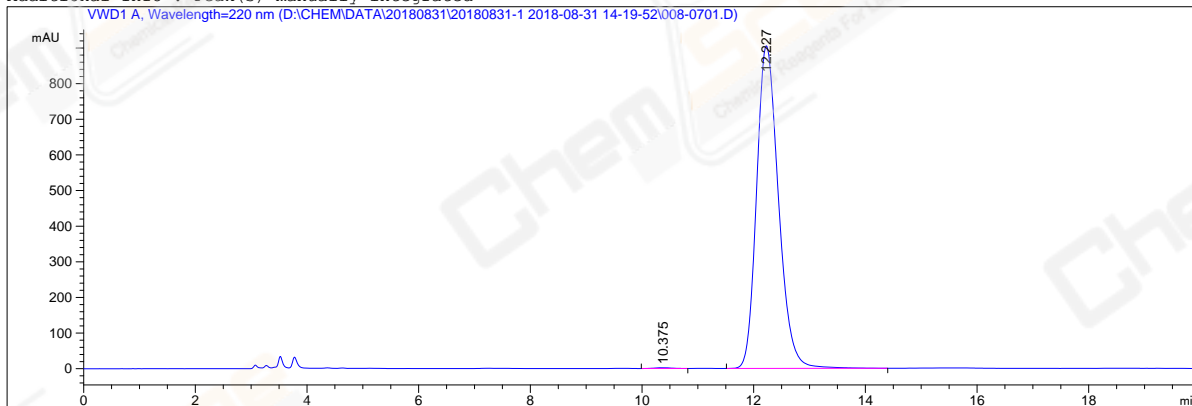


```
=====
Acq. Operator   : ZXM                      Seq. Line :    7
Acq. Instrument : HPLC-04                  Location  : Vial 8
Injection Date  : 8/31/2018 5:04:25 PM      Inj       :    1
                                           Inj Volume: 3.0 µl
Acq. Method    : D:\CHEM\DATA\20180831\20180831-1 2018-08-31 14-19-52\LD373_1AB-H01EE (NP-HPLC),C2.M
Last changed   : 8/31/2018 5:03:32 PM by ZXM
                (modified after loading)
Analysis Method: D:\CHEM\METHODS\AY,90A-ETOH,210NM,C1.M
Last changed   : 9/1/2018 9:38:17 AM by ZXM
                (modified after loading)
CAS NO.       : 1698055-85-4
                C-NP-38
=====
```

Additional Info : Peak(s) manually integrated



=====
Area Percent Report
=====

```
Sorted By      :      Signal
Multiplier:    :      1.0000
Dilution:      :      1.0000
Use Multiplier & Dilution Factor with ISTDs
```

Signal 1: VWD1 A, Wavelength=220 nm

Peak #	RetTime [min]	Type	Width [min]	Area mAU*s	Height [mAU]	Area %
1	10.375	BV	0.2933	44.70873	2.11422	0.1814
2	12.227	BB	0.4190	2.46004e4	905.04224	99.8186

```
Totals :                2.46451e4  907.15645
```

=====
Compound-related custom fields:

*** End of Report ***