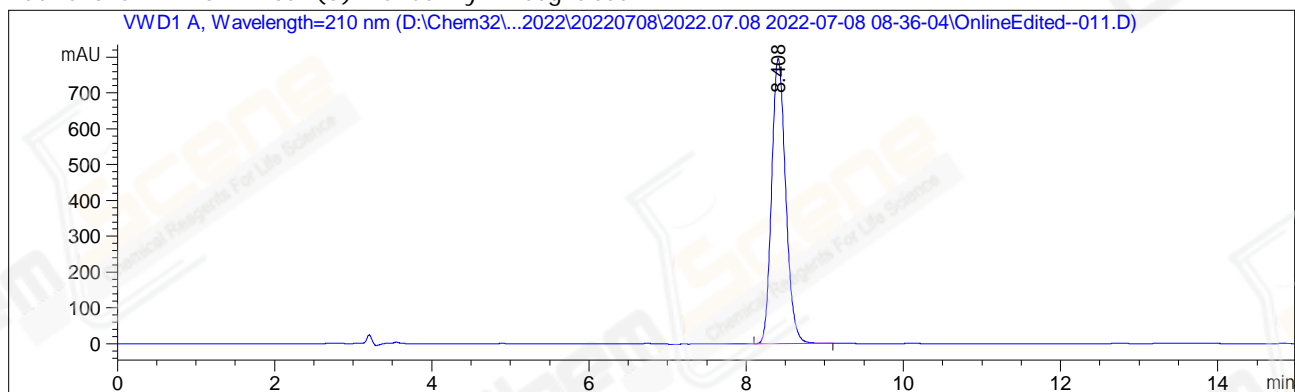


```
=====
Acq. Operator   : GJH_1472                      Seq. Line :   11
Acq. Instrument : HPLC-04                       Location  :    5
Injection Date  : 7/8/2022 2:43:22 PM          Inj       :    1
                                           Inj Volume: 5.000 µl
Different Inj Volume from Sample Entry! Actual Inj Volume : 3.000 µl
Acq. Method     : D:\Chem32\1\Data2022\20220708\2022.07.08 2022-07-08 08-36-04\IC, 95AB-ETOH,
                210NM, C1.M
Last changed    : 7/8/2022 2:31:18 PM by GJH_1472
Analysis Method : D:\Chem32\1\Data2022\20220708\2022.07.08 2022-07-08 08-36-04\IC, 95AB-ETOH,
                210NM, C1.M (Sequence Method)
Last changed    : 7/8/2022 3:18:08 PM by GJH_1472
                (modified after loading)
=====
```

Additional Info : Peak(s) manually integrated



=====
Area Percent Report
=====

Sorted By : Signal
Multiplier : 1.0000
Dilution : 1.0000
Do not use Multiplier & Dilution Factor with ISTDs

Signal 1: VWD1 A, Wavelength=210 nm

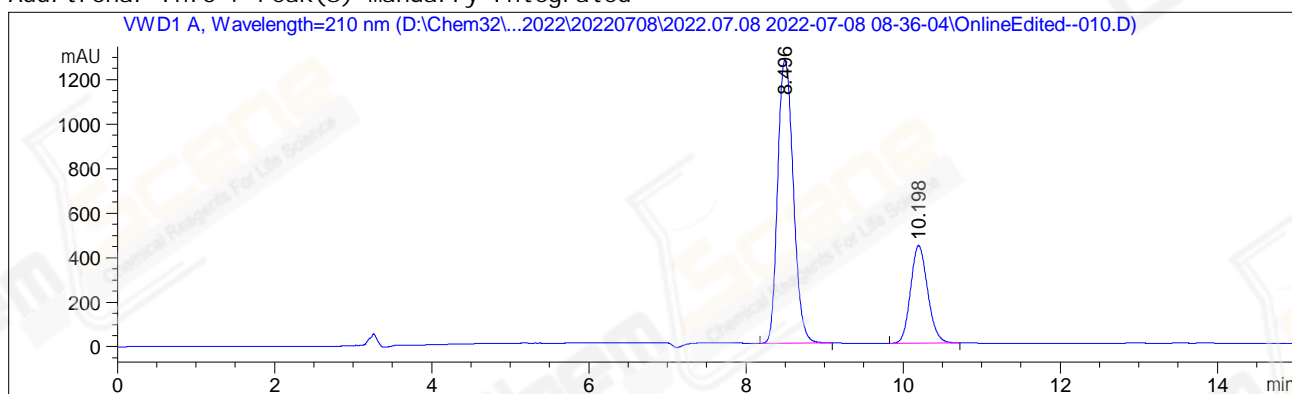
Peak #	RetTime [min]	Type	Width [min]	Area [mAU*s]	Height [mAU]	Area %
1	8.408	MM R	0.2076	9910.45020	795.58521	100.0000

Totals : 9910.45020 795.58521

=====
*** End of Report ***

=====
Acq. Operator : GJH_1472 Seq. Line : 10
Acq. Instrument : HPLC-04 Location : 4
Injection Date : 7/8/2022 2:26:57 PM Inj : 1
Inj Volume : 5.000 µl
Acq. Method : D:\Chem32\1\Data2022\20220708\2022.07.08 2022-07-08 08-36-04\IC, 95AB-ETOH,
210NM, C1.M
Last changed : 7/8/2022 2:31:18 PM by GJH_1472
(modified after Loading)
Analysis Method : D:\Chem32\1\Data2022\20220708\2022.07.08 2022-07-08 08-36-04\IC, 95AB-ETOH,
210NM, C1.M (Sequence Method)
Last changed : 7/8/2022 3:18:08 PM by GJH_1472
(modified after Loading)

Additional Info : Peak(s) manually integrated



=====
Area Percent Report
=====

Sorted By : Signal
Multiplier : 1.0000
Dilution : 1.0000
Do not use Multiplier & Dilution Factor with ISTDs

Signal 1: VWD1 A, Wavelength=210 nm

Peak #	RetTime [min]	Type	Width [min]	Area [mAU*s]	Height [mAU]	Area %
1	8.496	MM R	0.2308	1.75876e4	1269.78955	72.6148
2	10.198	MM R	0.2518	6632.77930	438.98239	27.3852

Totals : 2.42203e4 1708.77194

=====
*** End of Report ***