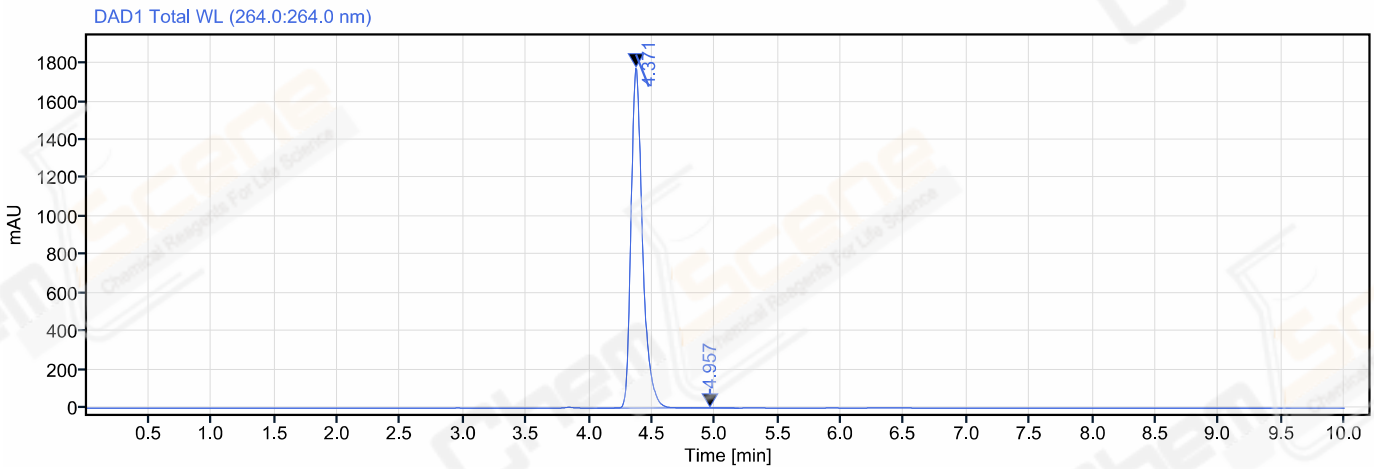


Single Injection Report

Sequence Name: 20240308
Sample name: LJC202403070056
Instrument: HPLC-175
Inj. volume: 5.000 µL
Acq. method: IC,80AB-ETOH,C1.amx
Processing method: *NPLC.pmx
Manually modified: Manual Integration

Project Name: 2024
Operator: GJH1472
Injection date: 2024-03-08 15:07:32+08:00
Location: P1-B7
Type: Sample
Sample amount: 0.00
CAS NO.: 146549-21-5



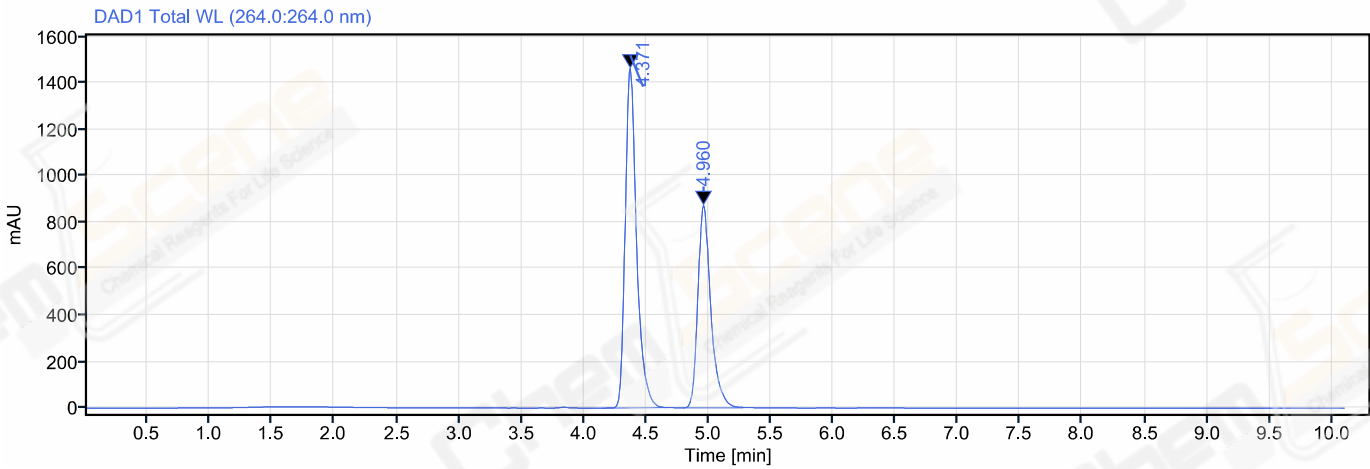
Signal: DAD1 Total WL (264.0:264.0 nm)

Name	RT [min]	Width [min]	Height	Area	Peak Resolution USP	Area%
	4.371	0.74	1777.91	11198.28		99.89
	4.957	0.38	1.35	12.02	3.27	0.11
Sum				11210.30		

Single Injection Report

Sequence Name: 20240308
Sample name: LJC202403070056-MIX
Instrument: HPLC-175
Inj. volume: 5.000 µL
Acq. method: IC,80AB-ETOH,C1.amx
Processing method: *NPLC.pmx
Manually modified: Manual Integration

Project Name: 2024
Operator: GJH1472
Injection date: 2024-03-08 14:56:29+08:00
Location: P1-B6
Type: Sample
Sample amount: 0.00
CAS NO.: 146549-21-5



Signal: DAD1 Total WL (264.0:264.0 nm)

Name	RT [min]	Width [min]	Height	Area	Peak Resolution USP	Area%
	4.371	0.53	1464.07	9238.58		59.27
	4.960	0.48	873.53	6349.27	3.44	40.73
Sum				15587.85		