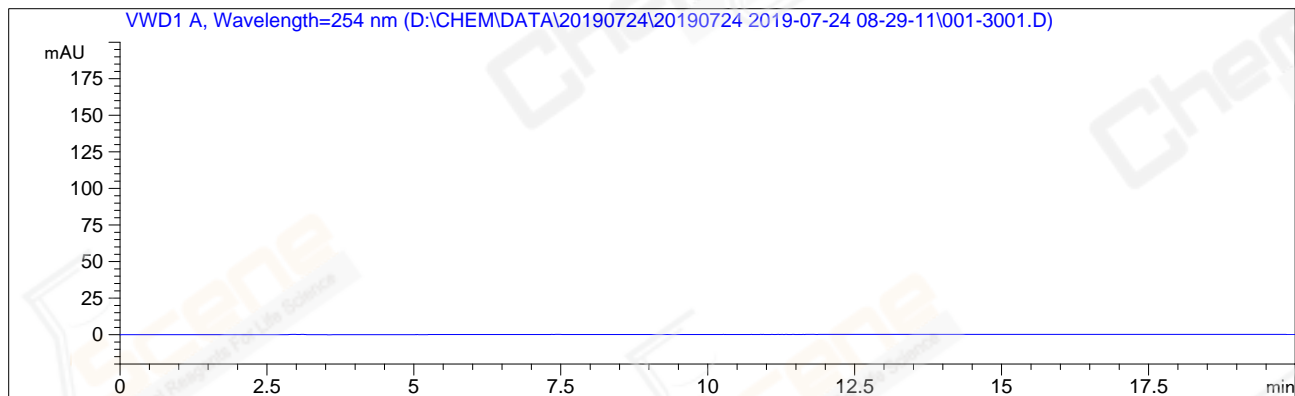


```
=====
Acq. Operator   : WZH                               Seq. Line :   30
Acq. Instrument : HPLC-04                           Location  : Vial 1
Injection Date  : 7/24/2019 4:27:20 PM              Inj       :    1
                                                    Inj Volume: 5.0 µl

Acq. Method    : D:\CHEM\DATA\20190724\20190724 2019-07-24 08-29-11\OD,90B,254NM.M
Last changed   : 7/24/2019 4:32:46 PM by WZH
                (modified after loading)

Analysis Method: D:\CHEM\METHODS\AD,70,210NM,C2.M
Last changed   : 7/25/2019 8:39:48 AM by WZH
                (modified after loading)

Catalog No     : CS-0581 Batch# 43812
                C-NP-25
=====
```



```
=====
                          Area Percent Report
=====
```

```
Sorted By           :      Signal
Multiplier:         :      1.0000
Dilution:           :      1.0000
Use Multiplier & Dilution Factor with ISTDs
```

No peaks found

```
=====
*** End of Report ***
=====
```

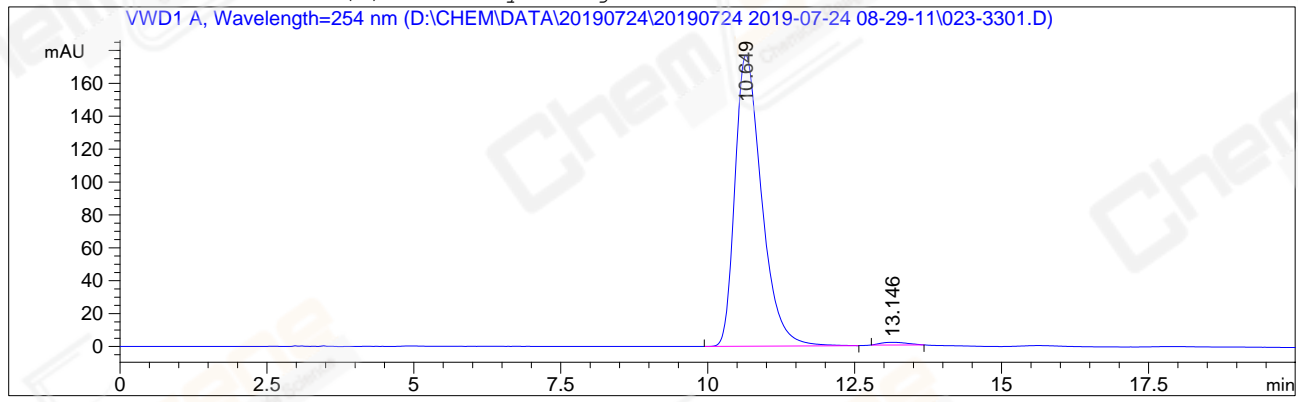
```

=====
Acq. Operator   : WZH                      Seq. Line   :   33
Acq. Instrument : HPLC-04                  Location    : Vial 23
Injection Date  : 7/24/2019 5:11:48 PM     Inj         :    1
                                           Inj Volume  : 5.0 µl

Acq. Method     : D:\CHEM\DATA\20190724\20190724 2019-07-24 08-29-11\OD,90B,254NM.M
Last changed    : 7/24/2019 5:11:12 PM by WZH
                 (modified after loading)

Analysis Method : D:\CHEM\METHODS\AD,70-ETOH,210NM,C1.M
Last changed    : 7/26/2019 9:13:24 AM by WZH
                 (modified after loading)

Additional Info : Peak(s) manually integrated
  
```



=====  
 Area Percent Report  
 =====

```

Sorted By      :      Signal
Multiplier:    :      1.0000
Dilution:      :      1.0000
Use Multiplier & Dilution Factor with ISTDs
  
```

Signal 1: VWD1 A, Wavelength=254 nm

Peak #	RetTime [min]	Type	Width [min]	Area mAU *s	Height [mAU]	Area %
1	10.649	MM R	0.5247	5573.75830	177.03601	99.0812
2	13.146	MM R	0.5286	51.68795	1.62980	0.9188
Totals :				5625.44625	178.66581	

=====  
 \*\*\* End of Report \*\*\*  
 =====