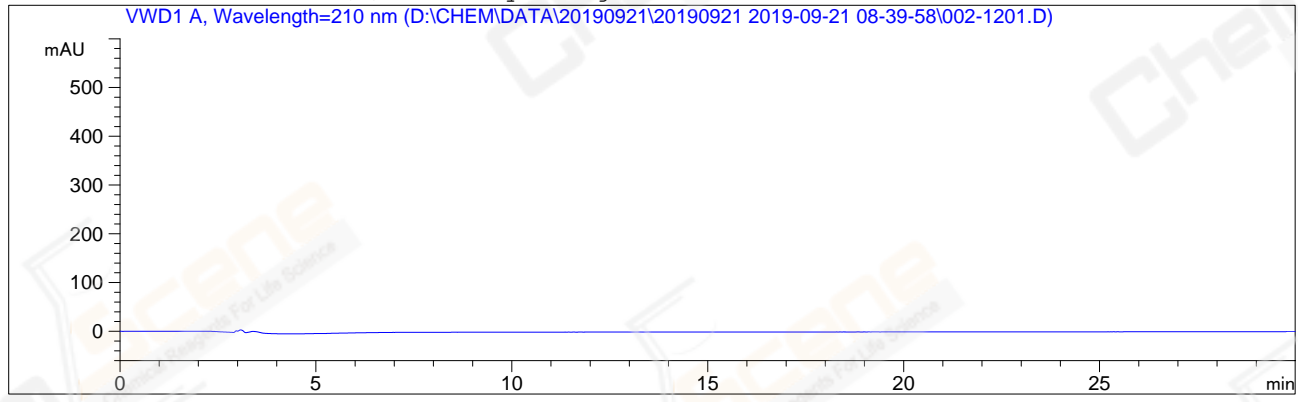


```
=====
Acq. Operator   : WZH                               Seq. Line : 12
Acq. Instrument : HPLC-04                           Location  : Vial 2
Injection Date  : 9/21/2019 1:23:59 PM              Inj       : 1
                                                    Inj Volume: 5.0 µl
Acq. Method    : D:\CHEM\DATA\20190921\20190921 2019-09-21 08-39-58\AD,85-ETOH,210NM.M
Last changed   : 9/21/2019 1:26:00 PM by WZH
                (modified after loading)
Analysis Method: D:\CHEM\METHODS\AD,85-ETOH,210NM.M
Last changed   : 9/21/2019 2:15:45 PM by WZH
                (modified after loading)
Catalog No     : CS-2514 Batch# 45796-BLK
                C-NP-41
=====
```

Additional Info : Peak(s) manually integrated



```
=====
                          Area Percent Report
=====
```

```
Sorted By           :      Signal
Multiplier:         :      1.0000
Dilution:           :      1.0000
Use Multiplier & Dilution Factor with ISTDs
```

No peaks found

```
=====
*** End of Report ***
=====
```

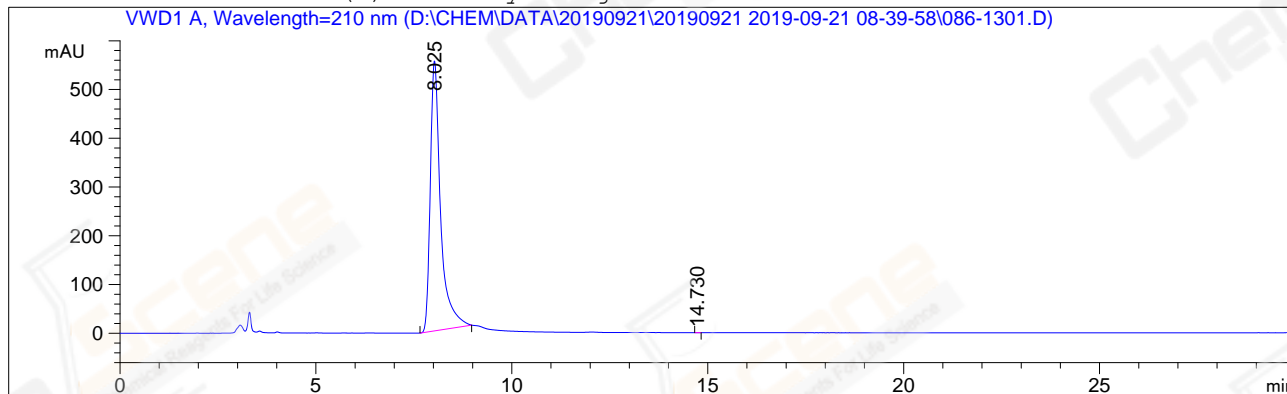
```
=====
Acq. Operator   : WZH                               Seq. Line :   13
Acq. Instrument : HPLC-04                           Location  : Vial 86
Injection Date  : 9/21/2019 1:55:04 PM              Inj       :    1
                                                    Inj Volume: 5.0 µl

Acq. Method    : D:\CHEM\DATA\20190921\20190921 2019-09-21 08-39-58\AD,85-ETOH,210NM.M
Last changed   : 9/21/2019 1:26:00 PM by WZH
                (modified after loading)

Analysis Method: D:\CHEM\METHODS\AD,85-ETOH,210NM.M
Last changed   : 9/21/2019 2:27:35 PM by WZH
                (modified after loading)

Catalog No     : CS-2514 Batch# 45796
                C-NP-41
=====
```

Additional Info : Peak(s) manually integrated



=====
Area Percent Report
=====

Sorted By : Signal
Multiplier: : 1.0000
Dilution: : 1.0000
Use Multiplier & Dilution Factor with ISTDs

Signal 1: VWD1 A, Wavelength=210 nm

Peak #	RetTime [min]	Type	Width [min]	Area mAU	Height [mAU]	Area %
1	8.025	MM R	0.3044	1.01145e4	553.82581	99.9987
2	14.730	MM R	0.0848	1.36252e-1	2.67936e-2	1.347e-3

Totals : 1.01146e4 553.85260

=====
*** End of Report ***