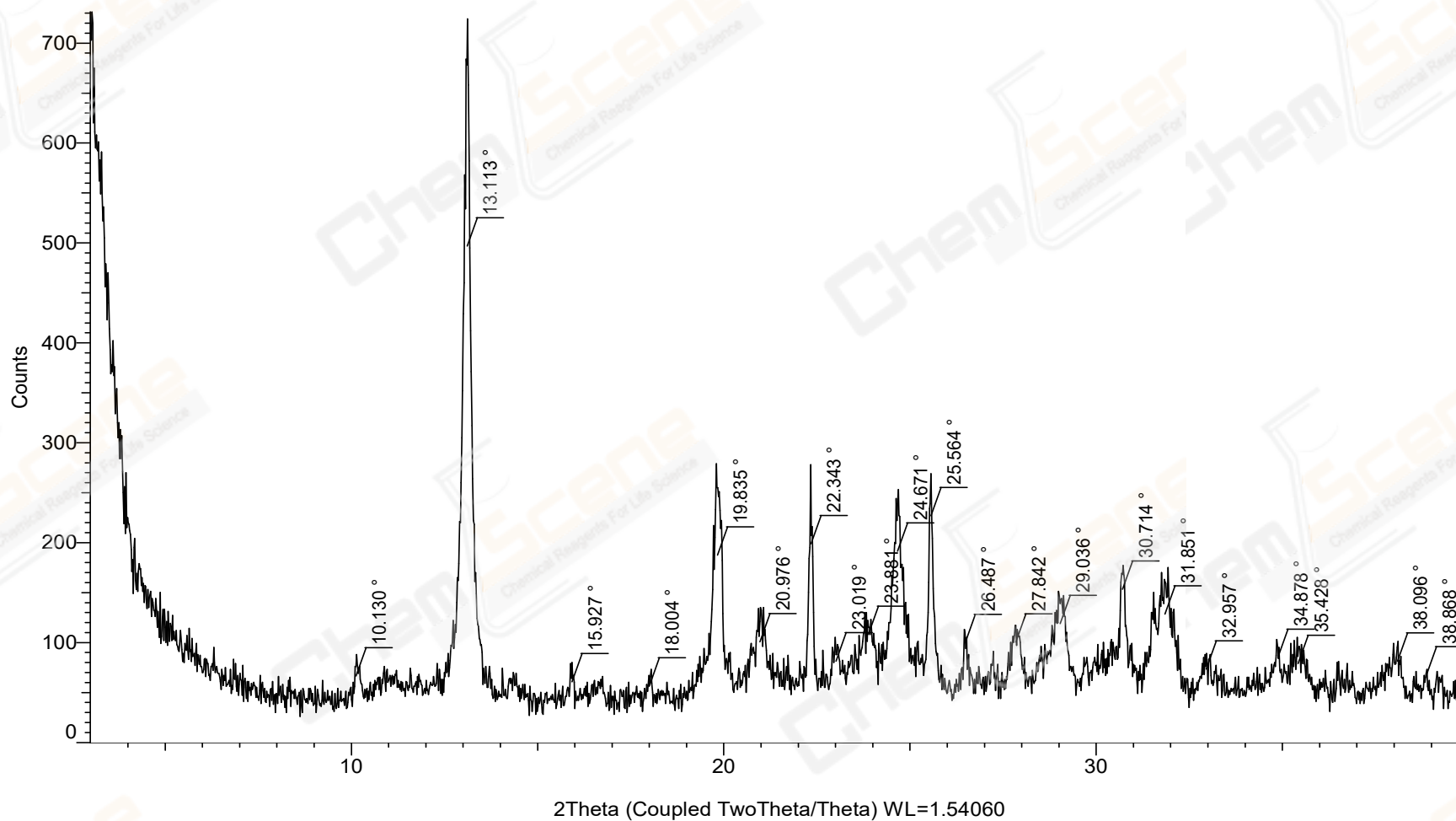


CAS NO.: 13453-69-5



CAS NO.: 13453-69-5

## Peak List #1

---

Visible	Name	Caption (display)	Angle	Intensity	Rel. Intensity
Yes	Peak #1	10.130 °	10.130 °	66.4607	5.2%
Yes	Peak #2	13.113 °	13.113 °	496.7	100.0%
Yes	Peak #3	15.927 °	15.927 °	60.6367	4.7%
Yes	Peak #4	18.004 °	18.004 °	56.2366	3.3%
Yes	Peak #5	19.835 °	19.835 °	187.334	30.2%
Yes	Peak #6	20.976 °	20.976 °	100.674	9.1%
Yes	Peak #7	22.343 °	22.343 °	198.835	31.2%
Yes	Peak #8	23.019 °	23.019 °	81.3708	4.5%
Yes	Peak #9	23.881 °	23.881 °	107.859	10.0%
Yes	Peak #10	24.671 °	24.671 °	191.43	29.2%
Yes	Peak #11	25.564 °	25.564 °	226.727	38.5%
Yes	Peak #12	26.487 °	26.487 °	99.8113	10.4%
Yes	Peak #13	27.842 °	27.842 °	100.248	8.5%
Yes	Peak #14	29.036 °	29.036 °	118.933	12.6%
Yes	Peak #15	30.714 °	30.714 °	153.327	20.5%
Yes	Peak #16	31.851 °	31.851 °	128.449	16.4%
Yes	Peak #17	32.957 °	32.957 °	73.4083	5.1%
Yes	Peak #18	34.878 °	34.878 °	85.0319	6.8%
Yes	Peak #19	35.428 °	35.428 °	78.926	5.6%
Yes	Peak #20	38.096 °	38.096 °	81.1911	7.3%
Yes	Peak #21	38.868 °	38.868 °	67.4913	4.4%

---