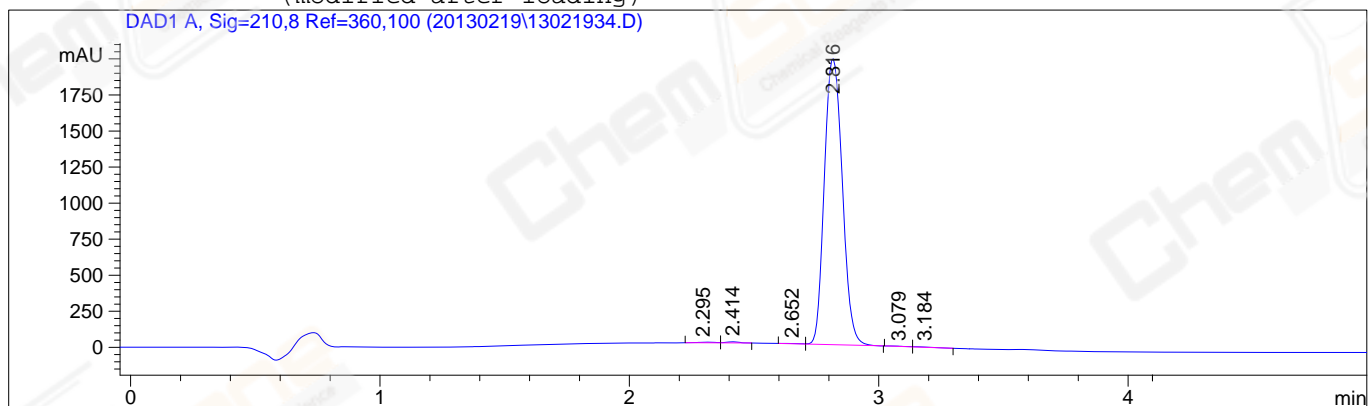


CAS NO.: 221040-37-5

```

=====
Injection Date   : 2/19/2013 3:03:37 PM           Seq. Line   : 34
Sample Name     : NSL1377-045-1                 Location    : Vial 23
Acq. Operator  : WXQ                           Inj         : 1
Acq. Instrument : Instrument 1                   Inj Volume  : 3 µl
Acq. Method    : E:\METHODS\METHODS\20101020\3-9A.M
Last changed   : 2/19/2013 3:05:29 PM by WXQ
                (modified after loading)
Analysis Method : E:\METHODS\METHODS\20101020\3-9A.M
Last changed   : 2/19/2013 3:10:48 PM by WXQ
                (modified after loading)
=====

```



```

=====
                          Area Percent Report
=====

```

```

Sorted By           :      Signal
Multiplier          :      1.0000
Dilution           :      1.0000
Use Multiplier & Dilution Factor with ISTDs

```

Signal 1: DAD1 A, Sig=210,8 Ref=360,100

Peak #	RetTime [min]	Type	Width [min]	Area [mAU*s]	Height [mAU]	Area %
1	2.295	MF R	0.0892	25.41970	4.74712	0.2525
2	2.414	FM R	0.0598	30.23763	8.42383	0.3003
3	2.652	MF R	0.0849	11.24369	2.20786	0.1117
4	2.816	FM R	0.0833	9975.11816	1995.36060	99.0807
5	3.079	MF R	0.0836	10.40824	2.07441	0.1034
6	3.184	FM R	0.0991	15.24571	2.56516	0.1514

```
Totals :                      1.00677e4  2015.37897
```

```

=====
*** End of Report ***
=====

```